

COMPACTA

1430UOI045P60-55x39

EAN 4031582010046

Swivel castor, housing made of pressed steel, bright zinc plated, blue passivated, single ball race swivel head, axle riveted, plate fitting. Wheel centre made of Polyamide, plain bearing



BETTER MOBILITY. BETTER LIFE.



Picture may differ from original product

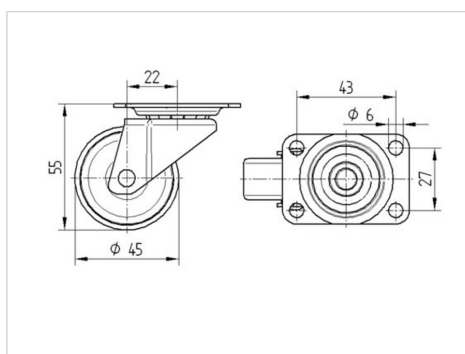
Technical Data

Wheel diameter	45 mm
Wheel width	18 mm
Size of Plate	55 x 39 mm
Plate hole centres	43 x 27 mm
Plate hole	6,2 mm
Offset	22 mm
Swivel Interference	89 mm
Overall height	54 mm
Temperature	- 40 / + 80 °C
Standard	EN 12528
Weight	0.086 kg
Swivel Radius	44.5 mm
Hardness of tread	Shore D 75
Load capacity	40 kg
Load capacity (static)	80 kg

Advantages at a glance

Roll performance	● ● ● ○ ○
Movement noise	● ● ● ○ ○
Attrition	● ● ● ● ●
Corrosion resistance	● ● ● ○ ○

Dimensions



Structure & Mounting

