

# AGILA

2470DIK125R07-Ø21,5-24

EAN 4031582328325

Swivel caster, housing made of pressed steel, bright zinc plated, blue passivated, double ball bearing swivel head, wheel axle with nut, Expandable fittings, round. Wheel center made of pressed steel, Tread: solid rubber, grey non-marking, with threadguards, cone ball bearing. Please indicate required tube diameter when ordering.



BETTER MOBILITY. BETTER LIFE.



Picture may differ from original product

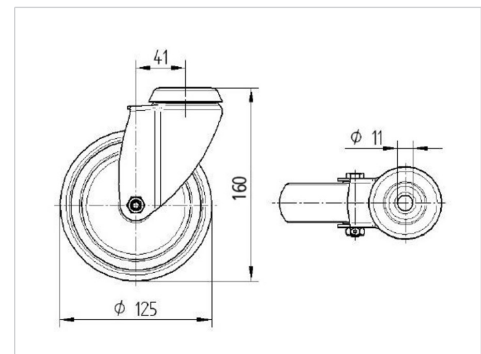
## Technical Data

|                         |                |
|-------------------------|----------------|
| Wheel diameter          | 125 mm         |
| Wheel width             | 32 mm          |
| Expandable fitting-Ø    | 21,5 - 24 mm   |
| Offset                  | 41 mm          |
| Swivel Interference     | 207 mm         |
| Overall height          | 163 mm         |
| Temperature             | - 10 / + 40 °C |
| Standard                | EN 12530       |
| Weight                  | 1.168 kg       |
| Swivel Radius           | 103.5 mm       |
| Hardness of tread       | Shore A 80     |
| Load capacity (dynamic) | 100 kg         |
| Load capacity (static)  | 200 kg         |

## Advantages at a glance

|                      |           |
|----------------------|-----------|
| Roll performance     | ● ● ● ○ ○ |
| Movement noise       | ● ● ● ○ ○ |
| Attrition            | ● ● ● ○ ○ |
| Corrosion resistance | ● ● ● ○ ○ |

## Dimensions



## Structure & Mounting

