

# AGILA

2470PJP075P40

EAN 4031582010466

Swivel castor, housing made of pressed steel, bright zinc plated, blue passivated, double ball bearing swivel head, plate fitting. Wheel centre made of Polypropylene, Tread: TENTEprene (thermoplastic rubber), grey non-marking, precision ball bearing, with threadguards



BETTER MOBILITY. BETTER LIFE.



Picture may differ from original product

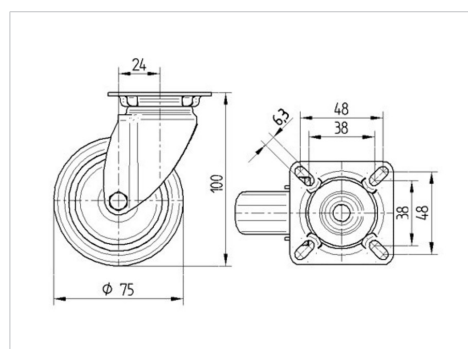
## Technical Data

|                        |                  |
|------------------------|------------------|
| Wheel diameter         | 75 mm            |
| Wheel width            | 25 mm            |
| Castor width           | 43 mm            |
| Size of Plate          | 60 x 60 mm       |
| Plate hole centres     | 48/38 x 48/38 mm |
| Plate hole             | 6,3 mm           |
| Dome-Ø                 | 43 mm            |
| Offset                 | 24 mm            |
| Swivel Interference    | 123 mm           |
| Overall height         | 100 mm           |
| Temperature            | - 20 / + 60 °C   |
| Standard               | EN 12530         |
| Weight                 | 0.283 kg         |
| Swivel Radius          | 61.5 mm          |
| Hardness of tread      | Shore A 87       |
| Load capacity          | 75 kg            |
| Load capacity (static) | 150 kg           |

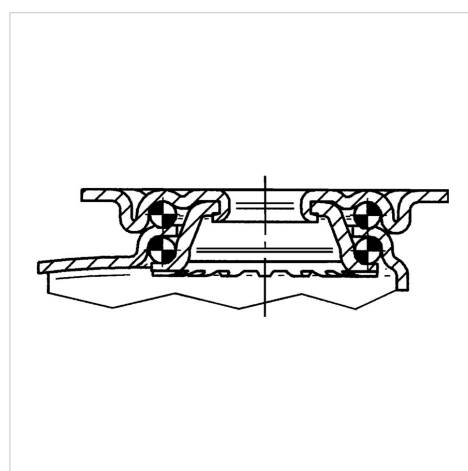
## Advantages at a glance

|                      |           |
|----------------------|-----------|
| Roll performance     | ● ● ● ○ ○ |
| Movement noise       | ● ● ● ○ ○ |
| Attrition            | ● ● ● ○ ○ |
| Corrosion resistance | ● ● ● ○ ○ |

## Dimensions



## Structure & Mounting



# AGILA

2470PJP075P40

EAN 4031582010466



BETTER MOBILITY. BETTER LIFE.

## Structure & Mounting

