

# AGILA

2477PJO125P30-11

EAN 4031582050400

Swivel caster with total lock, trailing end of caster, housing made of pressed steel, bright zinc plated, blue passivated, double ball bearing swivel head, wheel axle with nut, bolt hole. Wheel center made of Polypropylene, Tread: TENTEprene (thermoplastic rubber), grey non-marking, plain bearing casters can be mounted with standard screws; various length screws can be used.



BETTER MOBILITY. BETTER LIFE.

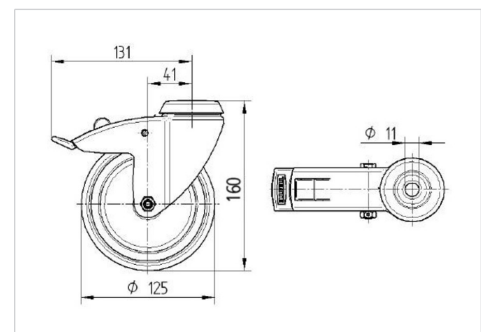


Picture may differ from original product

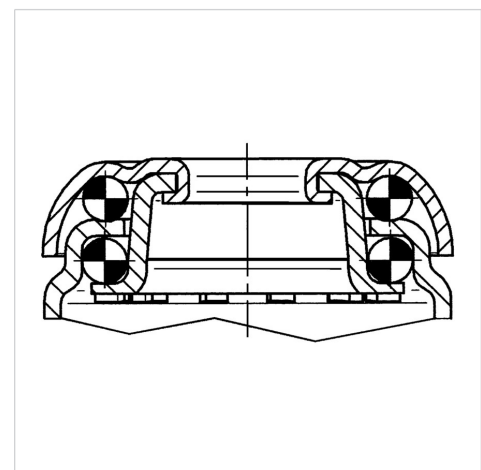
## Technical Data

|                         |                |
|-------------------------|----------------|
| Wheel diameter          | 125 mm         |
| Wheel width             | 32 mm          |
| Caster width            | 60 mm          |
| Center hole             | 11 mm          |
| Dome-Ø                  | 60 mm          |
| Offset                  | 41 mm          |
| Swivel Interference     | 262 mm         |
| Overall height          | 160 mm         |
| Temperature             | - 20 / + 60 °C |
| Standard                | EN 12530       |
| Weight                  | 0.803 kg       |
| Swivel Radius           | 131 mm         |
| Hardness of tread       | Shore A 87     |
| Load capacity (dynamic) | 100 kg         |
| Load capacity (static)  | 200 kg         |

## Dimensions



## Structure & Mounting



## Advantages at a glance

|                      |           |
|----------------------|-----------|
| Roll performance     | ● ● ● ○ ○ |
| Movement noise       | ● ● ● ○ ○ |
| Attrition            | ● ● ● ○ ○ |
| Corrosion resistance | ● ● ● ○ ○ |