

ALPHA

3477PVR100P30-13

EAN 4031582305685

Swivel castor with total lock, tail end of castor, housing made of pressed steel, bright zinc plated, blue passivated, double ball bearing swivel head, wheel axle with nut, bolt hole. Wheel centre made of Polypropylene, Tread: solid rubber, black, roller bearing



BETTER MOBILITY. BETTER LIFE.



Picture may differ from original product

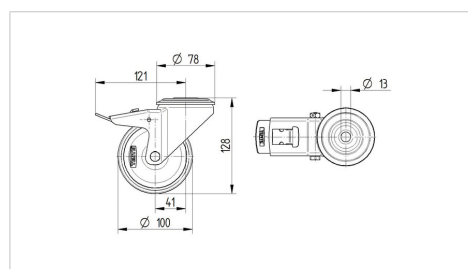
Technical Data

| | |
|------------------------|----------------|
| Wheel diameter | 100 mm |
| Wheel width | 35 mm |
| Centre hole | 13 mm |
| Offset | 41 mm |
| Swivel Interference | 242 mm |
| Overall height | 128 mm |
| Temperature | - 20 / + 60 °C |
| Standard | EN 12532 |
| Weight | 1.014 kg |
| Swivel Radius | 121 mm |
| Hardness of tread | Shore A 85 |
| Load capacity | 75 kg |
| Load capacity (static) | 150 kg |

Advantages at a glance

| | |
|----------------------|-----------|
| Roll performance | ● ● ● ○ ○ |
| Movement noise | ● ● ● ○ ○ |
| Attrition | ● ● ○ ○ ○ |
| Corrosion resistance | ● ● ● ○ ○ |

Dimensions



Structure & Mounting

