

ALPHA

3477PVR160P30-13

EAN 4031582305715

Swivel castor with total lock, tail end of castor, housing made of pressed steel, bright zinc plated, blue passivated, double ball bearing swivel head, wheel axle with nut, bolt hole. Wheel centre made of Polypropylene, Tread: solid rubber, black, roller bearing



BETTER MOBILITY. BETTER LIFE.



Picture may differ from original product

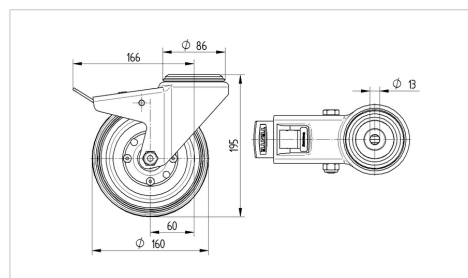
Technical Data

| | |
|------------------------|----------------|
| Wheel diameter | 160 mm |
| Wheel width | 40 mm |
| Castor width | 96 mm |
| Centre hole | 13 mm |
| Dome-Ø | 96 mm |
| Offset | 60 mm |
| Swivel Interference | 334 mm |
| Overall height | 195 mm |
| Temperature | - 20 / + 60 °C |
| Standard | EN 12532 |
| Weight | 2.236 kg |
| Swivel Radius | 167 mm |
| Hardness of tread | Shore A 80 |
| Load capacity | 135 kg |
| Load capacity (static) | 270 kg |

Advantages at a glance

| | |
|----------------------|-----------|
| Roll performance | ● ● ● ○ ○ |
| Movement noise | ● ● ● ○ ○ |
| Attrition | ● ● ○ ○ ○ |
| Corrosion resistance | ● ● ● ○ ○ |

Dimensions



Structure & Mounting

