

# ALPHA

3477UER160P30-13

EAN 4031582305838

Swivel castor with total lock, tail end of castor, housing made of pressed steel, bright zinc plated, blue passivated, double ball bearing swivel head, wheel axle with nut, bolt hole. Wheel centre made of Polyamide, Tread: elastic-tyre, black, roller bearing



BETTER MOBILITY. BETTER LIFE.



Picture may differ from original product

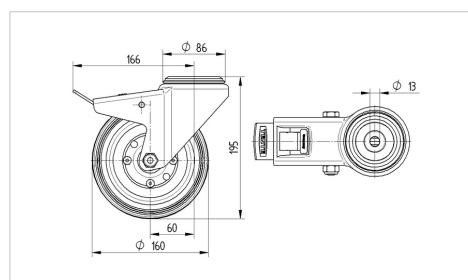
## Technical Data

Wheel diameter	160 mm
Wheel width	46 mm
Centre hole	13 mm
Offset	60 mm
Swivel Interference	334 mm
Overall height	195 mm
Temperature	- 20 / + 80 °C
Standard	EN 12532
Weight	2.337 kg
Swivel Radius	167 mm
Hardness of tread	Shore A 64
Load capacity	200 kg
Load capacity (static)	400 kg

## Advantages at a glance

Roll performance	● ● ● ○ ○
Movement noise	● ● ● ● ●
Attrition	● ● ● ○ ○
Corrosion resistance	● ● ● ○ ○

## Dimensions



## Structure & Mounting

