



BETTER MOBILITY. BETTER LIFE.

5327PJP125S70

EAN 4031582367492

Swivel castor with total lock, tail end of castor, housing and wheels made from high grade synthetic materials, with integrated threadguards, all metal parts are bright zinc plated, yellow thick layer passivated, threaded stem with hexagon neck. Wheel centre made of Polypropylene, Tread: TENTEprene (thermoplastic rubber), grey non-marking, precision ball bearing, with threadguards Please read the assembly instructions in the service area of the TENTE website.

Hint: These castors are also with grey locking lever available.



Picture may differ from original product

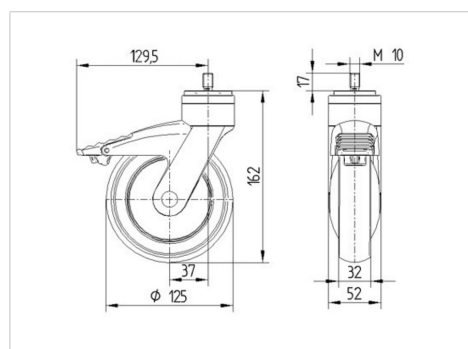
Technical Data

Wheel diameter	125 mm
Wheel width	32 mm
Threaded stem	M 10 x 17 mm
Offset	38 mm
Swivel Interference	259 mm
Overall height	162 mm
Temperature	- 10 / + 40 °C
Standard	EN 12530
Weight	0.565 kg
Hardness of tread	Shore A 87
Load capacity	100 kg
Load capacity (static)	200 kg

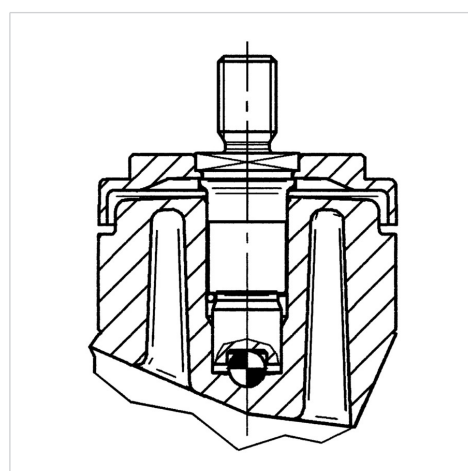
Advantages at a glance

Roll performance	● ● ● ○ ○
Movement noise	● ● ● ● ○
Attrition	● ● ● ○ ○
Corrosion resistance	● ● ● ● ○

Dimensions



Structure & Mounting



5327PJP125S70

EAN 4031582367492



BETTER MOBILITY. BETTER LIFE.

Structure & Mounting

