

## 5328PJP100P50

EAN 4031582030549

Fixed caster, Fork and wheels made from high grade synthetic materials, with integrated threadguards, all metal parts are bright zinc plated, yellow thick layer passivated, plate fitting.  
Wheel center made of Polypropylene, Tread: TENTEprene (thermoplastic rubber), grey non-marking, precision ball bearing, with threadguards



BETTER MOBILITY. BETTER LIFE.

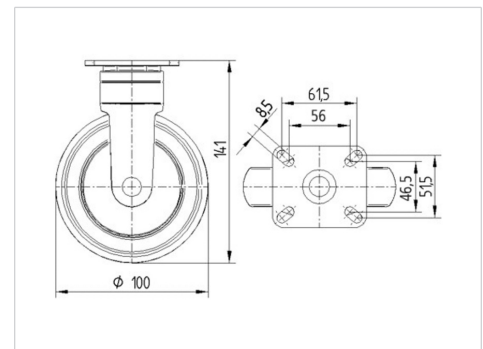


Picture may differ from original product

### Technical Data

Wheel diameter	100 mm
Wheel width	32 mm
Caster width	52 mm
Plate size	77 x 67 mm
Plate hole centers	61,5/56 x 51,5/46,5 mm
Plate hole	8,5 mm
Dome-Ø	52 mm
Overall height	141 mm
Temperature	- 10 / + 40 °C
Standard	EN 12530
Weight	0.504 kg
Hardness of tread	Shore A 87
Load capacity (dynamic)	100 kg
Load capacity (static)	200 kg

### Dimensions



### Advantages at a glance

Roll performance	● ● ● ○ ○
Movement noise	● ● ● ● ○
Attrition	● ● ● ○ ○
Corrosion resistance	● ● ● ● ○



BETTER MOBILITY. BETTER LIFE.

## 5328PJP100P50

EAN 4031582030549

### Structure & Mounting

