



BETTER MOBILITY. BETTER LIFE.

## 5328PJX125P51 INOX

EAN 4031582310269

Fixed caster, Fork and wheels made from high grade synthetic materials, with integrated threadguards, all metal parts are made of Stainless Steel, plate fitting.

Wheel center made of Polypropylene, Tread: TENTEprene (thermoplastic rubber), grey non-marking, with threadguards, precision ball bearing, sealed

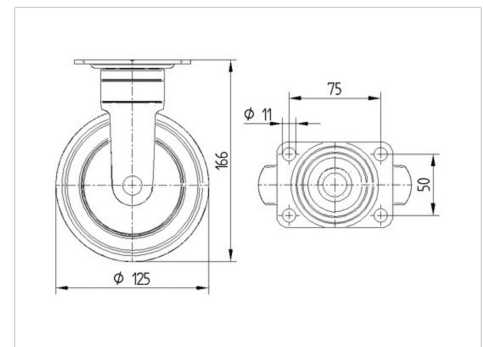


Picture may differ from original product

### Technical Data

Wheel diameter	125 mm
Wheel width	32 mm
Caster width	52 mm
Plate size	95 x 70 mm
Plate hole centers	75 x 50 mm
Plate hole	11 mm
Dome-Ø	52 mm
Overall height	166 mm
Temperature	- 10 / + 40 °C
Standard	EN 12530
Weight	0.696 kg
Hardness of tread	Shore A 87
Load capacity (dynamic)	100 kg
Load capacity (static)	200 kg

### Dimensions



### Advantages at a glance

Roll performance	● ● ● ○ ○
Movement noise	● ● ● ● ○
Attrition	● ● ● ○ ○
Corrosion resistance	● ● ● ● ●



BETTER MOBILITY. BETTER LIFE.

## 5328PJX125P51 INOX

EAN 4031582310269

### Structure & Mounting

