

OMIKRON

9250FTP300P66

EAN 4031582314014

Swivel castor, housing and plate steel-welded, zinc plated, blue passivated, sealed swivel bearing with dual purpose bearing and tapered roller bearing, threaded king pin and locking nut secured, grease nipple, wheel axle with nut, plate fitting. Wheel centre made of cast iron, Tread: Polyurethane, casted, precision ball bearing



BETTER MOBILITY. BETTER LIFE.



Picture may differ from original product

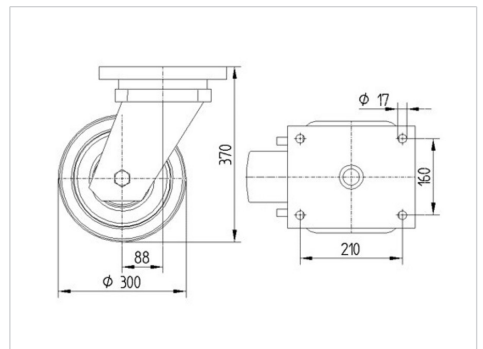
Technical Data

Wheel diameter	300 mm
Wheel width	100 mm
Castor width	182 mm
Size of Plate	250 x 200 mm
Plate hole centres	210 x 160 mm
Plate hole	17 mm
Dome-Ø	160 mm
Offset	90 mm
Swivel Interference	490 mm
Overall height	370 mm
Temperature	- 10 / + 60 °C
Standard	EN 12533
Weight	40.964 kg
Swivel Radius	245 mm
Hardness of tread	Shore D 42
Load capacity	3120 kg
Load capacity (static)	6240 kg

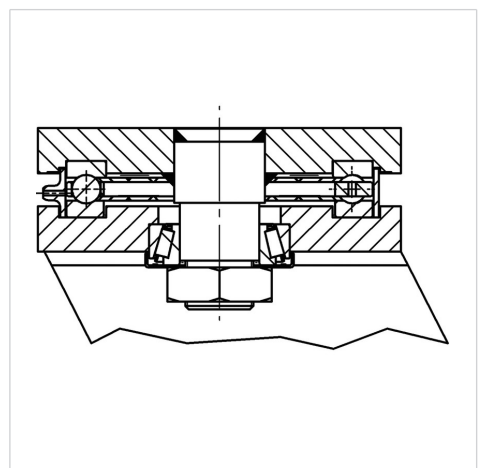
Advantages at a glance

Roll performance	● ● ● ● ○
Movement noise	● ● ● ○ ○
Attrition	● ● ● ● ○
Corrosion resistance	● ● ● ○ ○

Dimensions



Structure & Mounting



OMIKRON

9250FTP300P66

EAN 4031582314014



BETTER MOBILITY. BETTER LIFE.

Structure & Mounting

