

OMIKRON

9258FTP300P66

EAN 4031582314090

Fixed caster, Fork and plate steel welded, zinc plated, blue passivated, wheel axle with nut, plate fitting.

Wheel center made of cast iron, Tread: Polyurethane, casted, precision ball bearing



BETTER MOBILITY. BETTER LIFE.

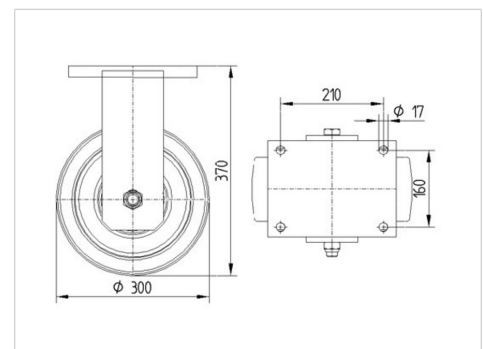


Picture may differ from original product

Technical Data

Wheel diameter	300 mm
Wheel width	100 mm
Caster width	182 mm
Plate size	250 x 200 mm
Plate hole centers	210 x 160 mm
Plate hole	17 mm
Dome-Ø	160 mm
Overall height	370 mm
Temperature	- 10 / + 60 °C
Standard	EN 12533
Weight	32.749 kg
Hardness of tread	Shore D 42
Load capacity (dynamic)	3120 kg
Load capacity (static)	6240 kg

Dimensions



Advantages at a glance

Roll performance	● ● ● ● ○
Movement noise	● ● ● ○ ○
Attrition	● ● ● ● ○
Corrosion resistance	● ● ● ○ ○

OMIKRON

9258FTP300P66

EAN 4031582314090



BETTER MOBILITY. BETTER LIFE.

Structure & Mounting

