

# ICS

5327PJP125S70

EAN 4031582367492



BETTER MOBILITY. BETTER LIFE.



Image may differ from the original product

## PERFORMANCE

Roll performance	● ● ● ○ ○
Movement noise	● ● ● ● ○
Attrition	● ● ● ○ ○
Corrosion resistance	● ● ● ● ○

## CORE ATTRIBUTES

Product name	ICS
Housing type	Swivel castor with total lock
Standard	EN12530 - Devices Castors
Load capacity at 3 km/h	220.46 lb
Load capacity Static	440.92 lb
Temperature range (Minimum)	14 °F
Temperature range (Maximum)	104 °F
Overall height	6.38 in
Overall weight	1.25 lb

## WHEEL

Body material	Polypropylene
Tread material	Thermoplastic rubber
Bearing	Precision ball bearing
Threadguards	Integrated threadguard
Diameter	4.92 in
Tread width	1.26 in
Hardness of tread (A)	87 Shore A

## HOUSING

Material	Polyamide
Fork shape	Slim
Swivel bearing	Stem, swiveling
Offset	1.5 in
Swivel interference	10.2 in
Thread diameter	0 in

## FITTING

Fitting type	Threaded stem with hexagon neck, top
Stem length	0.67 in



IF  
Design  
Award

# ICS

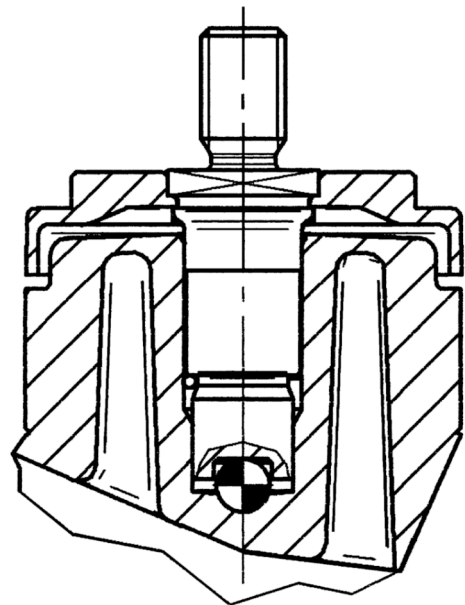
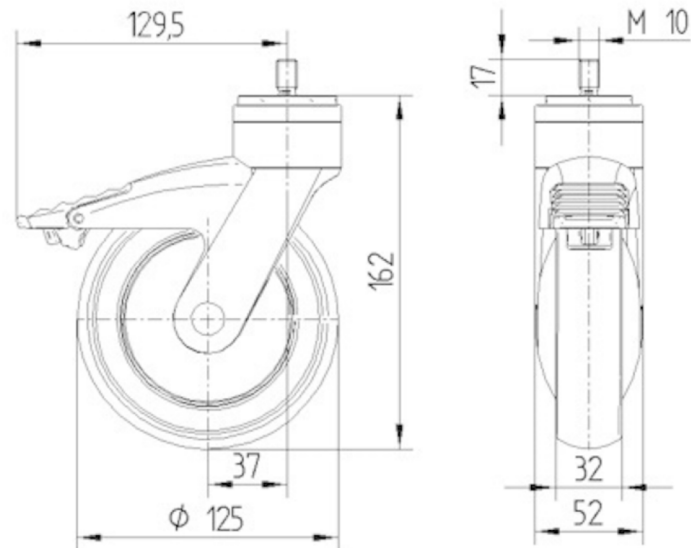
5327PJP125S70

EAN 4031582367492



BETTER MOBILITY. BETTER LIFE.

## TECHNICAL DRAWINGS



IF  
Design  
Award