

# ICS

5320XSX100R05-18X62

EAN 4031582309805



BETTER MOBILITY. BETTER LIFE.



Image may differ from the original product

### PERFORMANCE

Roll performance	● ● ● ○ ○
Movement noise	● ● ● ● ○
Attrition	● ● ● ○ ○
Corrosion resistance	● ● ● ● ○

### CORE ATTRIBUTES

Product name	ICS
Housing type	Swivel castor
Standard	EN12530 - Devices Castors
Load capacity at 3 km/h	100 kg
Load capacity Static	200 kg
Temperature range (Minimum)	-10 °C
Temperature range (Maximum)	40 °C
Overall height	137 mm
Overall weight	0.575 kg

### WHEEL

Body material	Polyamide, electric conductive
Tread material	Polyurethane, injected, electric-conductive
Bearing	Precision ball bearing, sealed
Threadguards	Integrated threadguard
Diameter	100 mm
Tread width	32 mm
Hardness of tread (D)	40 Shore D

### HOUSING

Material	Polyamide
Fork shape	Slim
Swivel bearing	Stem, swiveling
Offset	37 mm
Swivel radius	87 mm
Swivel interference	174 mm
Electric conductive	✓

### FITTING

Fitting type	Solid stem, round
Bolt diameter	18 mm
Bolt length	62 mm



IF  
Design  
Award

# ICS

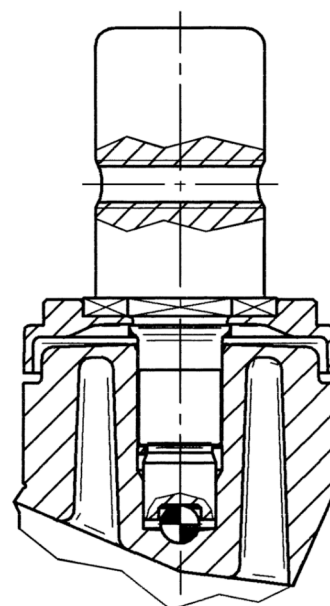
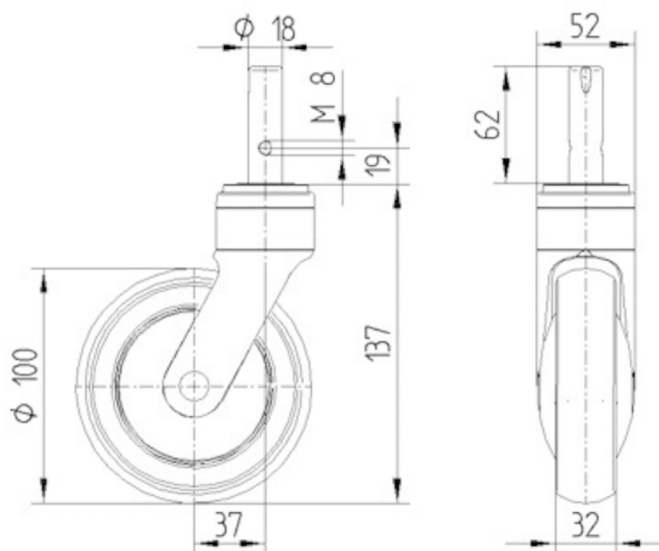
5320XSX100R05-18X62

EAN 4031582309805



BETTER MOBILITY. BETTER LIFE.

## TECHNICAL DRAWINGS



IF  
Design  
Award