

ICS

5327XSX125R05-28X45

EAN 4031582367737



BETTER MOBILITY. BETTER LIFE.



Image may differ from the original product

PERFORMANCE

Roll performance	● ● ● ○ ○
Movement noise	● ● ● ● ○
Attrition	● ● ● ○ ○
Corrosion resistance	● ● ● ● ○

CORE ATTRIBUTES

Product name	ICS
Housing type	Swivel castor with total lock
Standard	EN12530 - Devices Castors
Load capacity at 3 km/h	220.46 lb
Load capacity Static	440.92 lb
Temperature range (Minimum)	14 °F
Temperature range (Maximum)	104 °F
Overall height	6.38 in
Overall weight	1.88 lb

WHEEL

Body material	Polyamide, electric conductive
Tread material	Polyurethane, injected, electric-conductive
Bearing	Precision ball bearing, sealed
Threadguards	Integrated threadguard
Diameter	4.92 in
Tread width	1.26 in
Hardness of tread (A)	92 Shore A
Hardness of tread (D)	40 Shore D

HOUSING

Material	Polyamide
Fork shape	Slim
Swivel bearing	Stem, swiveling
Offset	1.5 in
Swivel interference	10.2 in
Electric conductive	✓

FITTING

Fitting type	Solid stem, round
Bolt diameter	1.1 in
Bolt length	1.77 in



IF
Design
Award

ICS

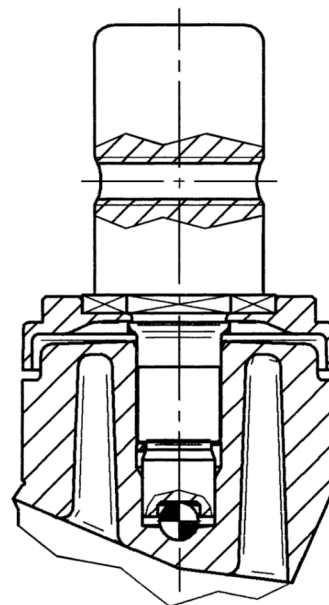
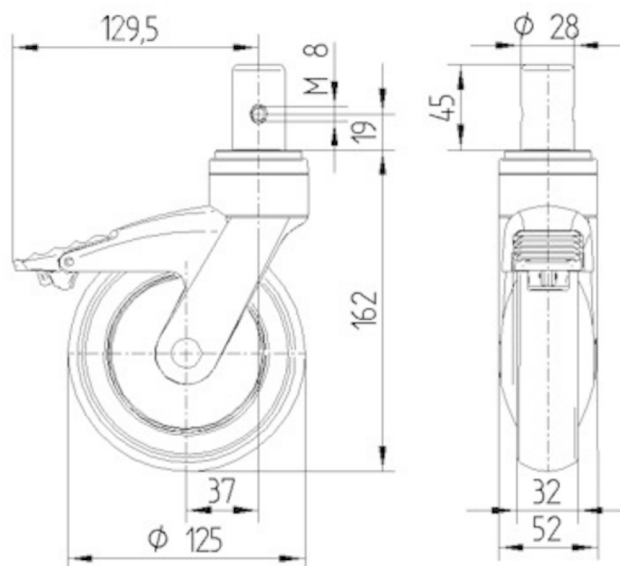
5327XSX125R05-28X45

EAN 4031582367737



BETTER MOBILITY. BETTER LIFE.

TECHNICAL DRAWINGS



IF
Design
Award