

ALPHA

3477DIR100P62

EAN 4031582305074



BETTER MOBILITY. BETTER LIFE.



Image may differ from the original product

PERFORMANCE

Roll performance	● ● ● ○ ○
Movement noise	● ● ● ○ ○
Attrition	● ● ● ○ ○
Corrosion resistance	● ● ● ○ ○

CORE ATTRIBUTES

Product name	Alpha
Housing type	Swivel castor with total lock
Standard	EN12532 - Transport Equipment
Load capacity at 4 km/h	70 kg
Load capacity Static	140 kg
Temperature range (Minimum)	-20 °C
Temperature range (Maximum)	60 °C
Overall height	128 mm
Overall weight	1.058 kg

WHEEL

Body material	Sheet Steel
Tread material	Solid rubber, non-marking
Bearing	Roller bearing
Axle	Screwed with nut
Threadguards	Without threadguard
Diameter	100 mm
Tread width	30 mm
Hardness of tread (A)	80 Shore A

HOUSING

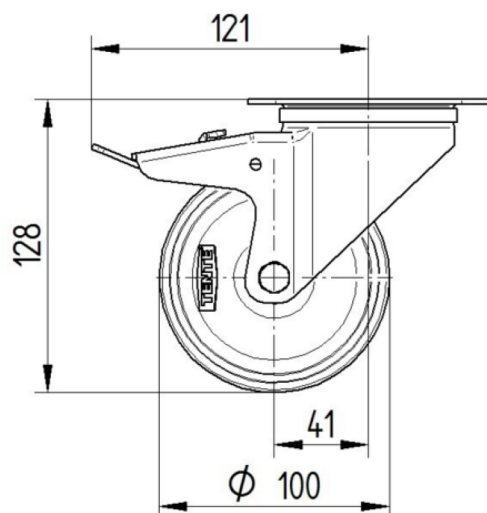
Material	Steel sheet, heavy
Fork shape	Broad
Swivel bearing	Two ball races
Offset	41 mm
Swivel radius	123 mm
Swivel interference	246 mm

FITTING

Fitting type	Rectangular plate
Plate length	105 mm
Plate width	80 mm
Plate hole length (Minimum)	77 mm
Plate hole length (Maximum)	80 mm
Plate hole width (Maximum)	60 mm
Plate hole diameter	9 mm

TECHNICAL DRAWINGS

3477U00100P62-neu



Platte 3470-080P62-105x80

