

E-DRIVE OPTIMA

EDOAUFF125P60

EAN 4031582497885



BETTER MOBILITY. BETTER LIFE.

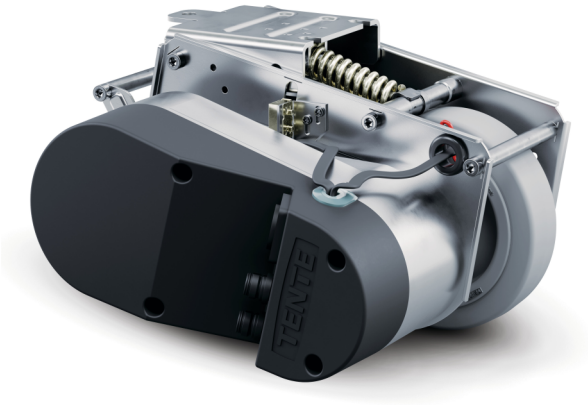


Image may differ from the original product

CORE ATTRIBUTES

Product name	E-Drive optima
Housing type	Drive Unit
Overall weight	7.26 kg
Length	Max. 315 mm (emergency release actuated)
Wheel diameter	125 mm, wear limit Ø 115 mm
Wheel tread	Solid rubber, non-marking, Shore A 63
Wheel width	35 mm
Width	222 mm
Maximum thrust force	25 N
Maximum lifting force / contact pressure force	400 N
Height in home position	140 mm
Installation height	170 mm
Emergency release	Mechanical
Protection type	IPX4 (splash water from all sides, all plugs plugged in)
Permissible ambient temperature	Operating temperature 5 °C to 40 °C, air humidity 90 %, non-condensing
Weight	7.25 kg
Maximum speed	6 km/h
Floor distance	30 mm
Ground unevenness (Minimum)	-15 mm
Ground unevenness (Maximum)	15 mm
Permissible storage temperature (Minimum)	-10 °C
Permissible storage temperature (Maximum)	45 °C

WHEEL

Body material	Polyamide
Tread material	Elastic tire, non-marking, vulcanized
Bearing	Flanged wheel
Diameter	125 mm

E-DRIVE OPTIMA

EDOAUFF125P60

EAN 4031582497885



BETTER MOBILITY. BETTER LIFE.

HOUSING

Material	Electric
Fork shape	Drive

FITTING

Fitting type	Rectangular plate
--------------	-------------------

DRIVE UNIT TRAVEL MOTOR

Nominal voltage	18 V
Nominal current	12.1 Ah
Nominal output	181 W
Nominal torque	9 N
Nominal speed	198.9 m/mn
Directions of travel	Forwards and backwards

DRIVE UNIT ACTUATOR

Nominal voltage	24 V
Nominal current	3.5 Ah
Nominal output	14.8 W
Nominal torque	4 N
Nominal speed	35.3 m/mn

E-DRIVE OPTIMA

EDOAUFF125P60

EAN 4031582497885



BETTER MOBILITY. BETTER LIFE.

TECHNICAL DRAWINGS

