

E-DRIVE OPTIMA

EDOAUFF125P60

EAN 4031582497885



BETTER MOBILITY. BETTER LIFE.

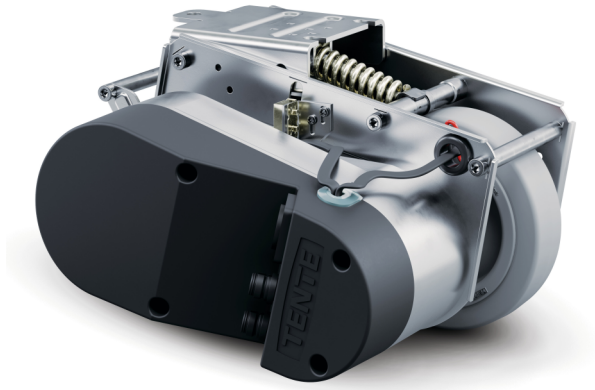


Image may differ from the original product

CORE ATTRIBUTES

Product name	E-Drive optima
Housing type	Drive Unit
Overall weight	16.01 lb
Length	Max. 315 mm (emergency release actuated)
Wheel diameter	125 mm, wear limit \sim 115 mm
Wheel tread	Solid rubber, non-marking, Shore A 63
Wheel width	1.38 in
Width	8.74 in
Maximum thrust force	25 N
Maximum lifting force / contact pressure force	400 N
Height in home position	5.51 in
Emergency release	Mechanical
Protection type	IPX4 (splash water from all sides, all plugs plugged in)
Permissible ambient temperature	Operating temperature 5 $^{\circ}$ C to 40 $^{\circ}$ C, air humidity 90 %, non-condensing
Weight	15.98 lb
Maximum speed	3.73 mi/h
Ground unevenness (Minimum)	-0.59 in
Ground unevenness (Maximum)	0.59 in

WHEEL

Body material	Polyamide
Tread material	Elastic tire, non-marking, vulcanized
Bearing	Flanged wheel
Diameter	4.92 in
Body width	1.38 in

HOUSING

Material	Electric
Fork shape	Drive

FITTING

Fitting type	Rectangular plate
--------------	-------------------

DRIVE UNIT TRAVEL MOTOR

Nominal voltage	18 V
Nominal current	12.1 Ah
Nominal output	181 W
Nominal torque	9 N
Nominal speed	123.59 mi/h
Directions of travel	Forwards and backward

DRIVE UNIT ACTUATOR

Nominal voltage	24 V
Nominal current	3.5 Ah
Nominal output	14.8 W
Nominal torque	4 N
Nominal speed	115.81 fpm

E-DRIVE OPTIMA

EDOAUFF125P60

EAN 4031582497885



BETTER MOBILITY. BETTER LIFE.

TECHNICAL DRAWINGS

