

E-DRIVE ULTIMATE

EDMZ310 3m

EAN 4031582488227

E-Drive ultimate hand control unit, set 24V. Emergency stop category 0, set consisting of two ergonomically designed handles.



BETTER MOBILITY. BETTER LIFE.



Picture may differ from original product

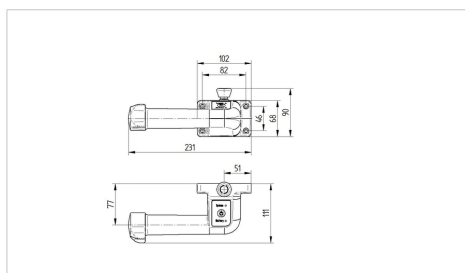
Technical Data

| | |
|---|---|
| Fitting options | for tube fitting from 27 – 35mm, for fitting on flat surfaces |
| Handle material | glass-fibre reinforced PA |
| Handle dimensions | see drawing |
| Cable length | 3.0 m including plug |
| Speed control | continuous variable, forwards and backwards |
| Driving switch | safety-tested in accordance with DIN ISO 13849 |
| Service life of travel switch | 2 mil. Cycles |
| Controller axle rotation angle | +/- 40° |
| Positions of thumb depression on controller | adjustable in 22.5° steps |
| Permitted environmental conditions | operating temperature 5 to 50° C (recommend 15 to 50° C) , atmospheric humidity 90%, non-condensing |
| Protection class | IP X4 (splash water from all sides, all plugs connected) |
| Permissible operating temperature | operating temperature 5 to 50° C (recommend 15 to 50° C) , atmospheric humidity 90%, non-condensing |
| Permitted storage temperatures | - 20 to 45° C |

Advantages at a glance

| | |
|----------------------|-----------|
| Roll performance | ○ ○ ○ ○ ○ |
| Movement noise | ○ ○ ○ ○ ○ |
| Attrition | ○ ○ ○ ○ ○ |
| Corrosion resistance | ○ ○ ○ ○ ○ |

Dimensions



Structure & Mounting

