

E-DRIVE ULTIMATE

EDMZ310 3m

EAN 4031582488227

E-Drive ultimate hand control unit set 24V. Emergency stop category 0, set consisting of two ergonomically designed handles.



BETTER MOBILITY. BETTER LIFE.

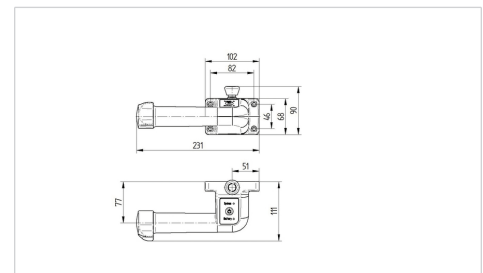


Picture may differ from original product

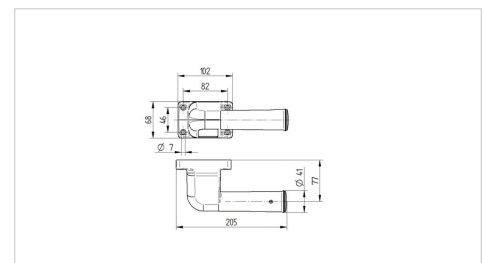
Technical data

Fitting options	for tube fitting from 27 – 35mm, for fitting on flat surfaces
Material handle	glass-fibre reinforced PA
Handle dimensions	see drawing
Cable length	3.0 m including plug
Speed control	continious variable, forwards and backwards
Driving switch	safety-tested in accordance with DIN ISO 13849
Service life of travel switch	2 mil. Cycles
Controller axle rotation angle	+/- 40°
Positions of thumb depression on controller	adjustable in 22.5° steps
Permitted environmental conditions	operating temperature 5 to 50° C (recommend 15 to 50° C) , atmospheric humidity 90%, non-condensing
Protection class	IP X4 (splash water from all sides, all plugs connected)
Permissible operating temperature	operating temperature 5 to 50° C (recommend 15 to 50° C) , atmospheric humidity 90%, non-condensing
Permitted storage temperatures	- 20 to 45° C

Dimensions



Structure & Mounting



Advantages at a glance

Roll performance	○ ○ ○ ○ ○
Attrition	○ ○ ○ ○ ○