

E-DRIVE OPTIMA

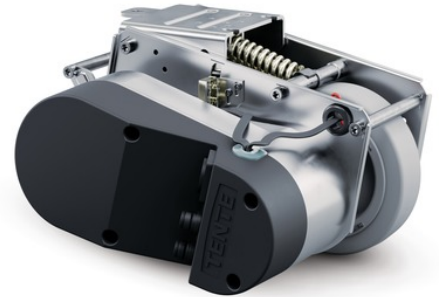
EDOAUFF125P60

EAN 4031582497885

E-Drive optima, drive unit with integrated control unit, can be lowered and raised, brushless motor with deceleration function and constant torque. Solid housing made of galvanized sheet steel, the wheel can be replaced by the customer and ordered individually, maintenance-free.



BETTER MOBILITY. BETTER LIFE.



Picture may differ from original product

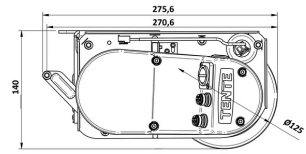
技术数据

轮子	UFF, solid rubber, non-marking, Shore 63A
车轮尺寸	125 mm
车轮宽度	35 mm
安装高度	170 mm
长度	max. 315 mm (Emergency release activated)
紧急释放	机械
宽度	220 mm
牵引电机	24 V DC
驾驶方向	前进/后退
高度 (折叠后)	140 mm
地面平整	+/- 20 mm
可驶过的门槛的最大高度	15 mm
最大。提升力/接触压力	400 N
重量	7.25 kg

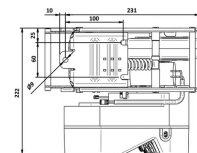
牵引电机

额定电压	18 V DC
额定扭矩	1 Nm
额定功率	260 W
额定速度	2100 rpm
额定电流	12.1 A

Dimensions



Structure & Mounting



E-DRIVE OPTIMA

EDOAUFF125P60

EAN 4031582497885



BETTER MOBILITY. BETTER LIFE.

操作模式	S1
最大。速度	6 km/h

伺服电机

额定电压	24 V DC
额定扭矩	4 Nm
额定功率	14.8 W
额定速度	35.3 min/-1
额定电流	3.5 A
操作模式	定期 S3
允许的环境条件	Operating temperature 5 to 50° C (recommended 15 to 50° C), humidity 90%, non-condensing
允许的储存温度	-10 bis +40 °C
保护等级	IP X4 (从四面溅水。 所有插头都已插入)

Advantages at a glance

滚动阻力	● ● ● ● ●
运动噪音	● ● ● ○ ○
磨损	● ● ● ○ ○
防锈	● ● ● ○ ○