



BETTER MOBILITY. BETTER LIFE.

Foot Protection Ø125

EAN 4031582439021

Flexible foot protection for maximum occupational safety; suitable for use with our 3640, 4680, 9650 and 9680 housing ranges, as fixed, swivel or locking castor models.

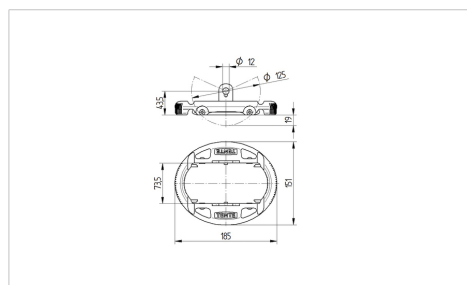


Illustrationen kan afvige fra originalen

Tekniske data

| | |
|-------------------------|--------------|
| Temperaturinterval | -20 / +60 °C |
| Vægt | 0.54 kg |
| Passende hjulstørrelser | 125 mm |
| Længde | 185 mm |
| Bredde | 151 mm |
| Frihøjde | 20 mm |
| Hårdhed af gummibane | A 75 Shore |

Dimensioner



Egenskaber/fordele

| | |
|-----------------|-----------|
| Rullemodstand | ○ ○ ○ ○ ○ |
| Kørselsstøj | ○ ○ ○ ○ ○ |
| Slid | ● ● ● ○ ○ |
| Rustbeskyttelse | ● ● ● ○ ○ |