



BETTER MOBILITY. BETTER LIFE.

Foot Protection Ø200

EAN 4031582439045

Flexible foot protection for maximum occupational safety; suitable for use with our 3640, 4680, 9650 and 9680 housing ranges, as fixed, swivel or locking castor models.

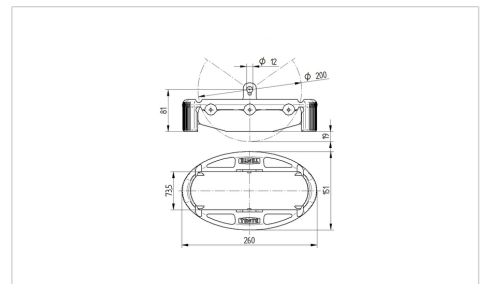


Picture may differ from original product

기술 데이터

온도	-20 / +60 °C
무게	0.75 kg
적절한 휠 크기	200 mm
길이	260 mm
폭	151 mm
지상간격	20 mm
고무플랩 경도	A 75 Shore

Dimensions



Advantages at a glance

롤 저항성	○ ○ ○ ○ ○
이동 소음	○ ○ ○ ○ ○
마찰	● ● ● ○ ○
부식 방지	● ● ● ○ ○