



BETTER MOBILITY. BETTER LIFE.

Foot Protection Ø250

EAN 4031582439052

Flexible foot protection for maximum occupational safety; suitable for use with our 3640, 4680, 9650 and 9680 housing ranges, as fixed, swivel or locking castor models.

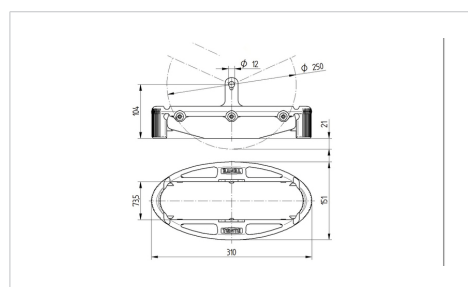


Picture may differ from original product

Technical Data

Temperature	-20 / +60 °C
Weight	0 kg
Suitable wheel sizes	250 mm
Length	310 mm
Width	151 mm
Ground clearance	20 mm
Hardness of rubber flap	A 75 Shore

Dimensions



Advantages at a glance

Roll performance	○ ○ ○ ○ ○
Movement noise	○ ○ ○ ○ ○
Attrition	○ ○ ○ ○ ○
Corrosion resistance	○ ○ ○ ○ ○