



BETTER MOBILITY. BETTER LIFE.

## Foot Protection Ø250

EAN 4031582439052

Flexible foot protection for maximum occupational safety; suitable for use with our 3640, 4680, 9650 and 9680 housing ranges, as fixed, swivel or locking castor models.

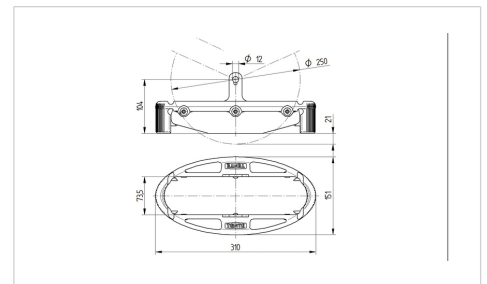


Picture may differ from original product

### 기술 데이터

|          |              |
|----------|--------------|
| 온도       | -20 / +60 °C |
| 무게       | 0 kg         |
| 적절한 휠 크기 | 250 mm       |
| 길이       | 310 mm       |
| 폭        | 151 mm       |
| 지상간격     | 20 mm        |
| 고무플랩 경도  | A 75 Shore   |

### Dimensions



### Advantages at a glance

|       |           |
|-------|-----------|
| 롤 저항성 | ○ ○ ○ ○ ○ |
| 이동 소음 | ○ ○ ○ ○ ○ |
| 마찰    | ○ ○ ○ ○ ○ |
| 부식 방지 | ○ ○ ○ ○ ○ |