

# ALPHA

3477DVR100P62

EAN 4031582050226  
Order number 00006178



BETTER MOBILITY. BETTER LIFE.



Image may differ from the original product

## PERFORMANCE

Roll performance	● ● ● ○ ○
Movement noise	● ● ● ● ○
Attrition	● ● ● ○ ○
Corrosion resistance	● ● ● ○ ○

## CORE ATTRIBUTES

Product name	Alpha
Housing type	Swivel castor with total lock
Standard	EN12532 - Transport Equipment
Load capacity at 4 km/h	154.32 lb
Load capacity Static	308.65 lb
Temperature range (Minimum)	-4 °F
Temperature range (Maximum)	185 °F
Overall height	5.04 in
Overall width	2.95 in
Overall weight	2.35 lb

## WHEEL

Body material	Sheet Steel
Tread material	Solid rubber, black
Bearing	Roller bearing
Axle	Screwed with nut
Wheel color	Blue passivated
Threadguards	Without threadguard
Diameter	3.94 in
Tread width	1.18 in
Body width	1.18 in
Hardness of tread (A)	80 Shore A

## HOUSING

Material	Steel sheet, heavy
Fork shape	Broad
Swivel bearing	Two ball races
Color	Blue passivated
Offset	1.61 in
Swivel radius	4.84 in
Swivel interference	9.69 in
Dome diameter	2.95 in

## FITTING

Fitting type	Rectangular plate
Plate length	4.13 in
Plate width	3.15 in
Plate hole length (Minimum)	3.03 in
Plate hole length (Maximum)	2.36 in
Plate hole width (Minimum)	3.03 in
Plate hole width (Maximum)	3.15 in
Plate hole diameter	0.35 in

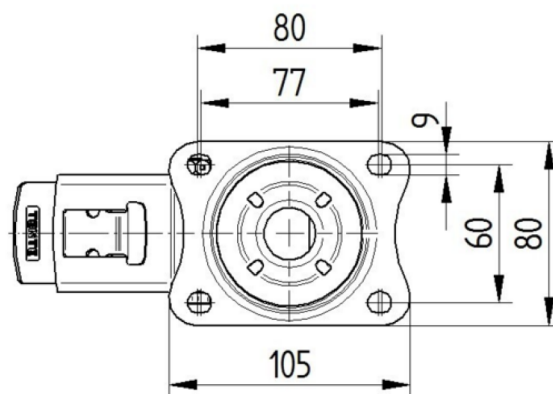
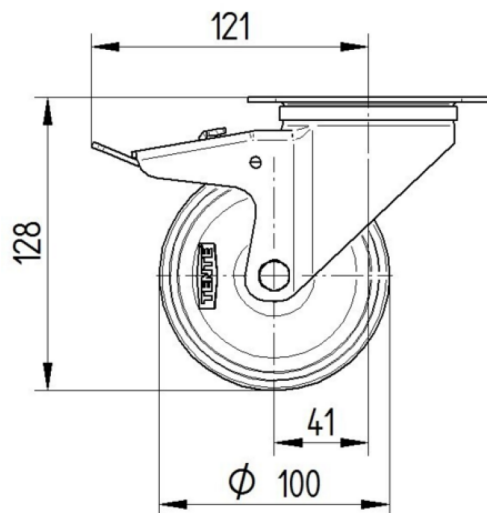
# ALPHA

3477DVR100P62

EAN 4031582050226  
Order number 00006178

## TECHNICAL DRAWINGS

3477U00100P62-neu



Platte 3470-080P62-105x80

