

ICS

5328PJX125P51 7001 INOX

EAN 4031582310269
Order number 00027291



Image may differ from the original product

PERFORMANCE

Roll performance	● ● ● ○ ○
Movement noise	● ● ● ● ○
Attrition	● ● ● ○ ○
Corrosion resistance	● ● ● ● ●

CORE ATTRIBUTES

Product name	ICS
Housing type	Fixed castor
Standard	EN12530 - Devices Castors
Load capacity at 3 km/h	220.46 lb
Load capacity Static	440.92 lb
Temperature range (Minimum)	14 °F
Temperature range (Maximum)	104 °F
Overall height	6.54 in
Overall width	2.05 in
Overall weight	1.53 lb

WHEEL

Body material	Polypropylene
Tread material	Thermoplastic rubber
Bearing	Precision ball bearing, sealed
Wheel color	Silver gray (RAL7001)
Threadguards	Integrated threadguard
Diameter	4.92 in
Tread width	1.26 in
Body width	1.26 in
Hardness of tread (A)	87 Shore A

HOUSING

Material	Polyamide
Fork shape	Slim
Color	Silver gray (RAL7001)
Dome diameter	2.05 in

FITTING

Fitting type	Rectangular plate
Plate length	3.74 in
Plate width	2.76 in
Plate hole length (Maximum)	1.97 in
Plate hole width (Maximum)	2.95 in
Plate hole diameter	0.43 in



IF
Design
Award

ICS

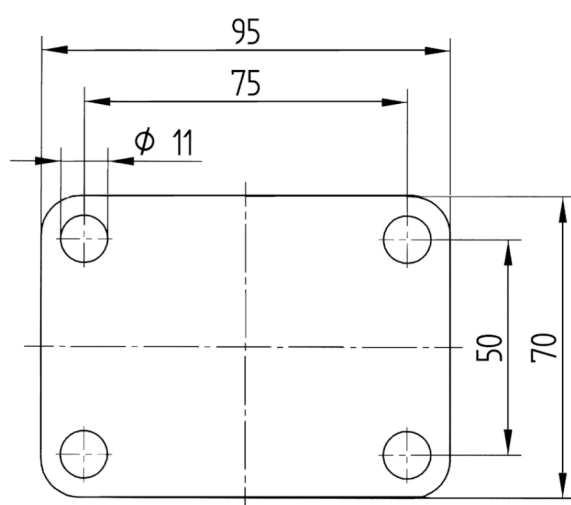
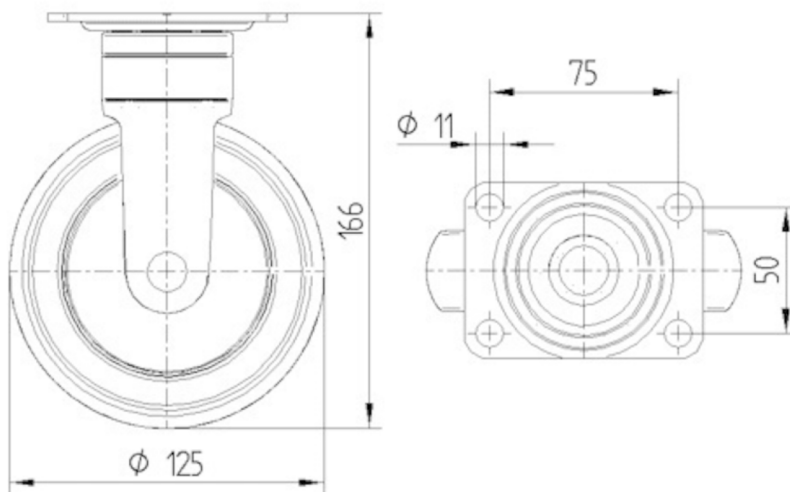
5328PJX125P51 7001 INOX

EAN 4031582310269
Order number 00027291



BETTER MOBILITY. BETTER LIFE.

TECHNICAL DRAWINGS



IF
Design
Award