

AGILA TWIN

2976PJH075P54 OFFSET-28 NO-CR-VI

EAN 4031582302875
Order number 00028313



BETTER MOBILITY. BETTER LIFE.

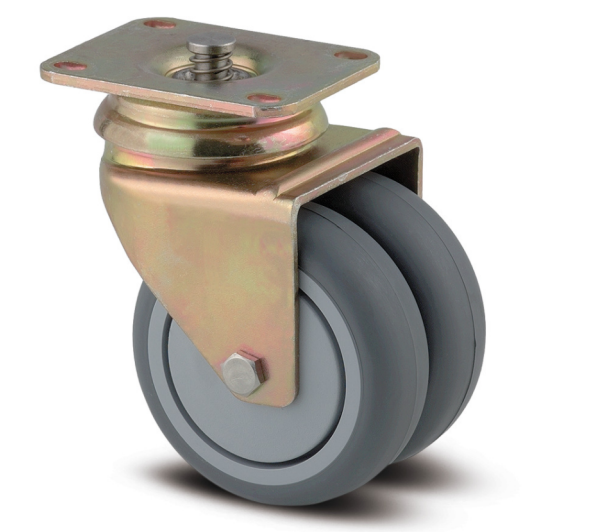


Image may differ from the original product

PERFORMANCE

Roll performance	● ● ● ○ ○
Movement noise	● ● ● ● ○
Attrition	● ● ● ○ ○
Corrosion resistance	● ● ● ○ ○

CORE ATTRIBUTES

Product name	Agila twin
Housing type	Swivel castor with central, total lock
Standard	EN12530 - Devices Castors
Load capacity at 3 km/h	100 kg
Load capacity Static	200 kg
Temperature range (Minimum)	-20 °C
Temperature range (Maximum)	60 °C
Overall height	103 mm
Overall width	71 mm
Overall weight	0.58 kg

WHEEL

Body material	Polypropylene
Tread material	Thermoplastic rubber
Bearing	Plain bearing
Wheel color	Slate grey (RAL7015)
Threadguards	With threadguard
Diameter	75 mm
Tread width	25 mm
Body width	25 mm
Hardness of tread (A)	87 Shore A

HOUSING

Material	Steel sheet, medium
Fork shape	Twin wheel housing
Swivel bearing	Two ball races
Colour	Yellow passivated
Offset	28 mm
Swivel radius	65.5 mm
Swivel interference	131 mm
Dome diameter	65 mm

FITTING

Fitting type	Rectangular plate with brake elements
Plate length	70 mm
Plate width	55 mm
Plate hole length (Minimum)	51 mm
Plate hole length (Maximum)	41 mm
Plate hole width (Minimum)	51 mm
Plate hole width (Maximum)	57 mm
Plate hole diameter	5.5 mm

AGILA TWIN

2976PJH075P54 OFFSET-28 NO-CR-VI

EAN 4031582302875
Order number 00028313



BETTER MOBILITY. BETTER LIFE.

TECHNICAL DRAWINGS

