

ICS

5328UAX125P51 INOX 7001

EAN 4031582310313
Order number 00030788



BETTER MOBILITY. BETTER LIFE.



Image may differ from the original product

PERFORMANCE

Roll performance	● ● ● ○ ○
Movement noise	● ● ● ○ ○
Attrition	● ● ● ● ○
Corrosion resistance	● ● ● ● ●

CORE ATTRIBUTES

Product name	ICS
Housing type	Fixed castor
Standard	EN12530 - Devices Castors
Load capacity at 3 km/h	100 kg
Load capacity Static	200 kg
Temperature range (Minimum)	-10 °C
Temperature range (Maximum)	40 °C
Overall height	166 mm
Overall width	52 mm
Overall weight	0.757 kg

WHEEL

Body material	Polyamide
Tread material	Polyurethane, injected
Bearing	Precision ball bearing, sealed
Wheel color	Silver grey (RAL7001)
Threadguards	Integrated threadguard
Diameter	125 mm
Tread width	32 mm
Body width	32 mm
Hardness of tread (A)	92 Shore A
Hardness of tread (D)	42 Shore D

HOUSING

Material	Polyamide
Fork shape	Slim
Colour	Silver grey (RAL7001)
Dome diameter	52 mm

FITTING

Fitting type	Rectangular plate
Plate length	95 mm
Plate width	70 mm
Plate hole length (Maximum)	50 mm
Plate hole width (Maximum)	75 mm
Plate hole diameter	11 mm



IF
Design
Award

ICS

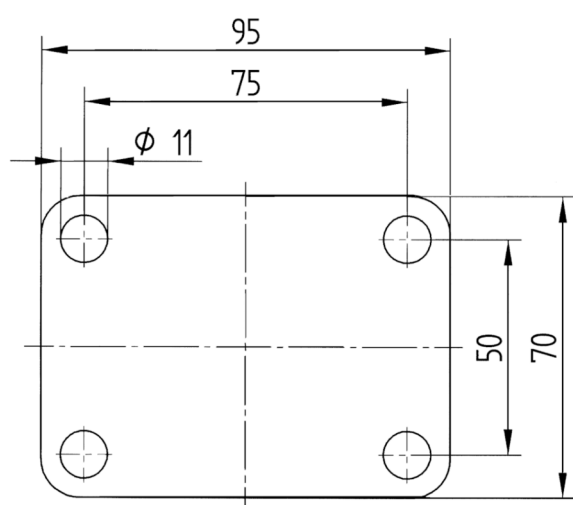
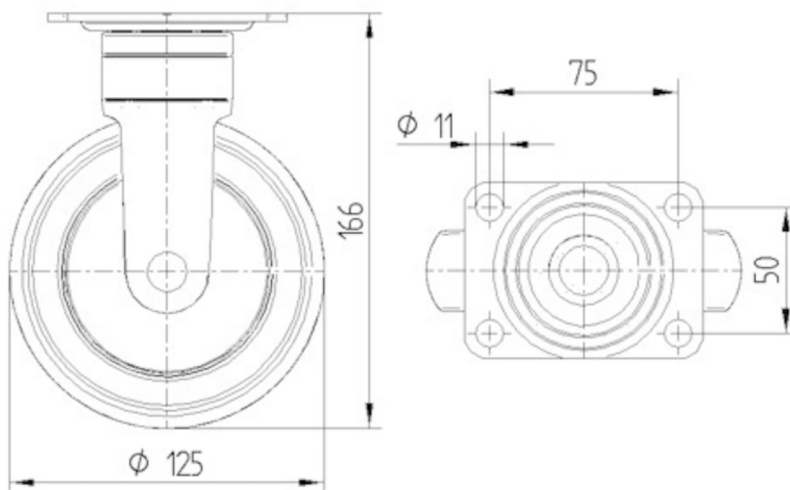
5328UAX125P51 INOX 7001

EAN 4031582310313
Order number 00030788



BETTER MOBILITY. BETTER LIFE.

TECHNICAL DRAWINGS



IF
Design
Award