

# INTEGRAL TWIN

2940UAP125R05-28 9002

EAN 4031582302486  
Order number 00032980



BETTER MOBILITY. BETTER LIFE.



Image may differ from the original product

## PERFORMANCE

Roll performance	● ● ● ● ●
Movement noise	● ● ● ○ ○
Attrition	● ● ● ● ○
Corrosion resistance	● ● ● ○ ○

## CORE ATTRIBUTES

Product name	Integral twin
Housing type	Swivel castor
Standard	EN12531 - Hospital Bed Castors
Load capacity at 3 km/h	125 kg
Load capacity at 4 km/h	125 kg
Load capacity Static	375 kg
Temperature range (Minimum)	-25 °C
Temperature range (Maximum)	80 °C
Overall height	150 mm
Overall width	63 mm
Overall weight	1.114 kg
Certification	Tested and monitored by TÜV Süd

## WHEEL

Body material	Polyamide
Tread material	Polyurethane, injected
Bearing	Precision ball bearing
Wheel color	Grey white (RAL9002)
Threadguards	With threadguard
Diameter	125 mm
Tread width	12 mm
Body width	12 mm
Hardness of tread (A)	92 Shore A
Hardness of tread (D)	42 Shore D

## HOUSING

Material	Steel sheet, medium
Fork shape	Twin wheel housing
Swivel bearing	Precision ball bearing
Colour	Grey white (RAL9002)
Offset	37.5 mm
Swivel radius	103 mm
Swivel interference	206 mm
Dome diameter	61.5 mm

## FITTING

Fitting type	Solid stem, round
Bolt diameter	28 mm
Bolt length	45 mm
Bolt thread position	19 mm
Bolt mounting holes quantity	2

# INTEGRAL TWIN

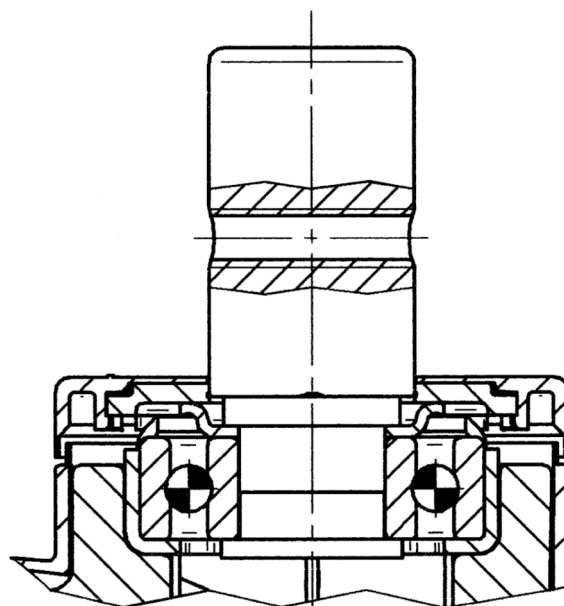
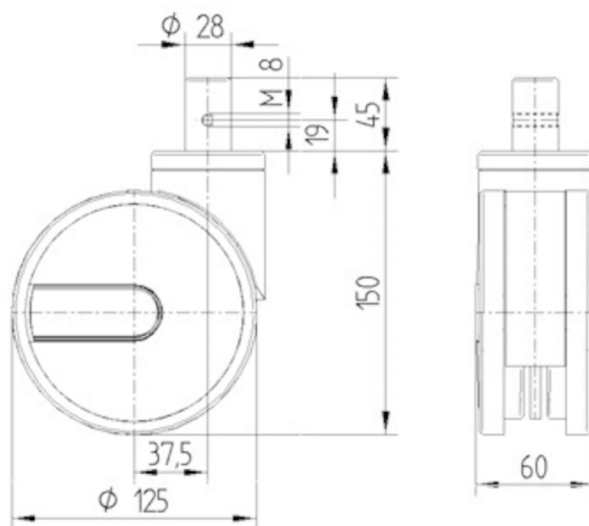
2940UAP125R05-28 9002

EAN 4031582302486  
Order number 00032980



BETTER MOBILITY. BETTER LIFE.

## TECHNICAL DRAWINGS



German  
Design  
Award



Red Dot  
Design  
Award