

# INTEGRAL TWIN

2940UAP150R05-28 9002

EAN 4031582302509  
Order number 00032990



BETTER MOBILITY. BETTER LIFE.



Image may differ from the original product

## PERFORMANCE

Roll performance	● ● ● ● ●
Movement noise	● ● ● ○ ○
Attrition	● ● ● ● ○
Corrosion resistance	● ● ● ○ ○

## CORE ATTRIBUTES

Product name	Integral twin
Housing type	Swivel castor
Standard	EN12531 - Hospital Bed Castors
Load capacity at 3 km/h	330.69 lb
Load capacity at 4 km/h	330.69 lb
Load capacity Static	992.08 lb
Temperature range (Minimum)	-13 °F
Temperature range (Maximum)	176 °F
Overall height	6.89 in
Overall width	2.95 in
Overall weight	2.21 lb
Certification	Tested and monitored by TÜV Süd

## WHEEL

Body material	Polyamide
Tread material	Polyurethane, injected
Bearing	Precision ball bearing
Wheel color	Gray white (RAL9002)
Threadguards	With threadguard
Diameter	5.91 in
Tread width	0.59 in
Body width	0.59 in
Hardness of tread (A)	92 Shore A
Hardness of tread (D)	42 Shore D

## HOUSING

Material	Steel sheet, medium
Fork shape	Twin wheel housing
Swivel bearing	Precision ball bearing
Color	Gray white (RAL9002)
Offset	1.77 in
Swivel radius	4.88 in
Swivel interference	9.76 in
Dome diameter	2.76 in

## FITTING

Fitting type	Solid stem, round
Bolt diameter	1.1 in
Bolt length	1.77 in
Bolt thread position	0.75 in
Bolt mounting holes quantity	2

# INTEGRAL TWIN

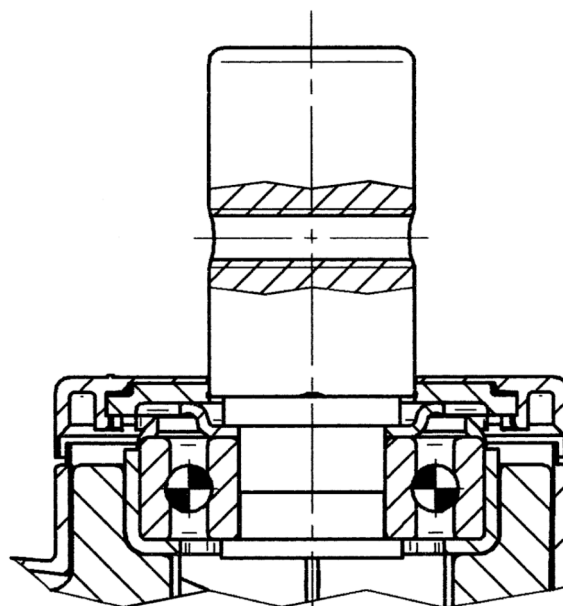
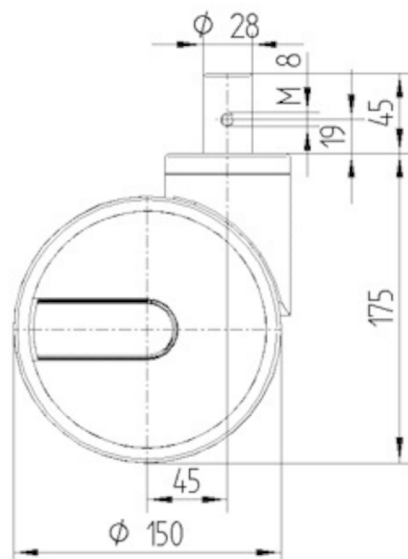
2940UAP150R05-28 9002

EAN 4031582302509  
Order number 00032990



BETTER MOBILITY. BETTER LIFE.

## TECHNICAL DRAWINGS



German  
Design  
Award



Red Dot  
Design  
Award