

# INTEGRAL TWIN

2944UAP150R26-28S45 D 9002 4XM8

EAN 4031582302561  
Order number 990033077



BETTER MOBILITY. BETTER LIFE.



Image may differ from the original product

## PERFORMANCE

Roll performance	● ● ● ● ●
Movement noise	● ● ● ○ ○
Attrition	● ● ● ● ○
Corrosion resistance	● ● ● ○ ○

## CORE ATTRIBUTES

Product name	Integral twin
Housing type	Swivel castor with central, total or directional lock
Standard	EN12531 - Hospital Bed Castors
Load capacity at 3 km/h	150 kg
Load capacity at 4 km/h	150 kg
Load capacity Static	450 kg
Temperature range (Minimum)	-25 °C
Temperature range (Maximum)	80 °C
Overall height	175 mm
Overall width	75 mm
Overall weight	1.421 kg
Certification	Tested and monitored by TÜV Süd

## WHEEL

Body material	Polyamide
Tread material	Polyurethane, injected
Bearing	Precision ball bearing
Wheel color	Grey white (RAL9002)
Threadguards	With threadguard
Diameter	150 mm
Tread width	15 mm
Body width	15 mm
Hardness of tread (A)	92 Shore A
Hardness of tread (D)	42 Shore D

## HOUSING

Material	Steel sheet, medium
Fork shape	Twin wheel housing
Swivel bearing	Precision ball bearing
Colour	Grey white (RAL9002)
Offset	45 mm
Swivel radius	124 mm
Swivel interference	248 mm
Dome diameter	70 mm

## FITTING

Fitting type	Stem with cam hole for profile bars
Bolt diameter	28 mm
Bolt length	96 mm
Bolt thread position	19 mm
Bolt mounting holes quantity	4

# INTEGRAL TWIN

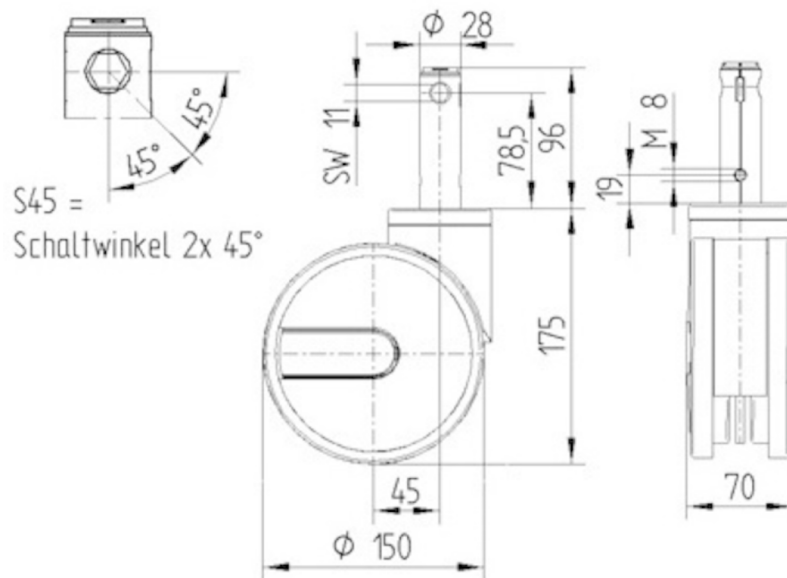
2944UAP150R26-28S45 D 9002 4XM8

EAN 4031582302561  
Order number 990033077



BETTER MOBILITY. BETTER LIFE.

## TECHNICAL DRAWINGS



German  
Design  
Award



Red Dot  
Design  
Award