

# INTEGRAL TWIN

2946UAP150R26-28S45 D 9002 4XM8

EAN 4031582302622  
Order number 00035803



BETTER MOBILITY. BETTER LIFE.



Image may differ from the original product

## PERFORMANCE

|                      |           |
|----------------------|-----------|
| Roll performance     | ● ● ● ● ● |
| Movement noise       | ● ● ● ○ ○ |
| Attrition            | ● ● ● ● ○ |
| Corrosion resistance | ● ● ● ○ ○ |

## CORE ATTRIBUTES

|                             |  |
|-----------------------------|--|
| Product name                | Integral twin                          |
| Housing type                | Swivel castor with central, total lock |
| Standard                    | EN12531 - Hospital Bed Castors         |
| Load capacity at 3 km/h     | 150 kg                                 |
| Load capacity at 4 km/h     | 150 kg                                 |
| Load capacity Static        | 450 kg                                 |
| Temperature range (Minimum) | -25 °C                                 |
| Temperature range (Maximum) | 80 °C                                  |
| Overall height              | 175 mm                                 |
| Overall width               | 75 mm                                  |
| Overall weight              | 1.421 kg                               |
| Certification               | Tested and monitored by TÜV Süd        |

## WHEEL

|                       |                        |
|-----------------------|------------------------|
| Body material         | Polyamide              |
| Tread material        | Polyurethane, injected |
| Bearing               | Precision ball bearing |
| Wheel color           | Grey white (RAL9002)   |
| Threadguards          | With threadguard       |
| Diameter              | 150 mm                 |
| Tread width           | 15 mm                  |
| Body width            | 15 mm                  |
| Hardness of tread (A) | 92 Shore A             |
| Hardness of tread (D) | 42 Shore D             |

## HOUSING

|                     |                        |
|---------------------|------------------------|
| Material            | Steel sheet, medium    |
| Fork shape          | Twin wheel housing     |
| Swivel bearing      | Precision ball bearing |
| Colour              | Grey white (RAL9002)   |
| Offset              | 45 mm                  |
| Swivel radius       | 124 mm                 |
| Swivel interference | 248 mm                 |
| Dome diameter       | 70 mm                  |

## FITTING

|                              |                                     |
|------------------------------|-------------------------------------|
| Fitting type                 | Stem with cam hole for profile bars |
| Bolt diameter                | 28 mm                               |
| Bolt length                  | 96 mm                               |
| Bolt thread position         | 19 mm                               |
| Bolt mounting holes quantity | 4                                   |

# INTEGRAL TWIN

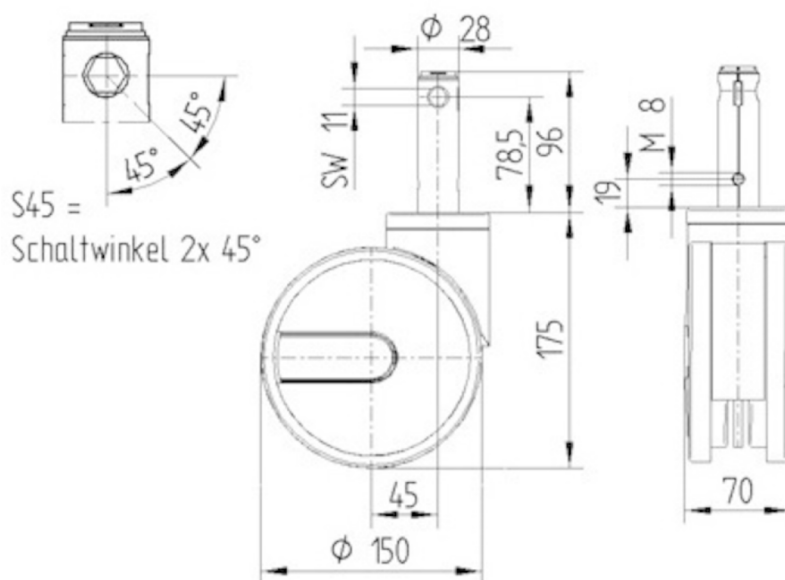
2946UAP150R26-28S45 D 9002 4XM8

EAN 4031582302622  
Order number 00035803



BETTER MOBILITY. BETTER LIFE.

## TECHNICAL DRAWINGS



German  
Design  
Award



Red Dot  
Design  
Award