

LEVINA

5371PJP125P30-11 7001/6032

EAN 4031582351736
Order number 00038132



BETTER MOBILITY. BETTER LIFE.



Image may differ from the original product

PERFORMANCE

| | |
|----------------------|-----------|
| Roll performance | ● ● ● ○ ○ |
| Movement noise | ● ● ● ● ○ |
| Attrition | ● ● ● ○ ○ |
| Corrosion resistance | ● ● ● ● ○ |

CORE ATTRIBUTES

| | |
|-----------------------------|-------------------------------------|
| Product name | Levina |
| Housing type | Swivel castor with directional lock |
| Standard | EN12530 - Devices Castors |
| Load capacity at 3 km/h | 220.46 lb |
| Load capacity Static | 440.92 lb |
| Temperature range (Minimum) | 14 °F |
| Temperature range (Maximum) | 104 °F |
| Overall height | 6.34 in |
| Overall width | 2.32 in |
| Overall weight | 1.26 lb |

WHEEL

| | |
|-----------------------|------------------------|
| Body material | Polypropylene |
| Tread material | Thermoplastic rubber |
| Bearing | Precision ball bearing |
| Wheel color | Silver gray (RAL7001) |
| Threadguards | With threadguard |
| Diameter | 4.92 in |
| Tread width | 1.26 in |
| Body width | 1.26 in |
| Hardness of tread (A) | 87 Shore A |

HOUSING

| | |
|---------------------|-----------------------|
| Material | Polyamide |
| Fork shape | Slim |
| Swivel bearing | Two ball races |
| Color | Silver gray (RAL7001) |
| Offset | 1.5 in |
| Swivel radius | 3.96 in |
| Swivel interference | 7.91 in |
| Dome diameter | 2.32 in |

FITTING

| | |
|--------------------|-----------|
| Fitting type | Bolt hole |
| Bolt hole diameter | 0.43 in |



Universal
Design
Award



Deutscher
Designer
Club

LEVINA

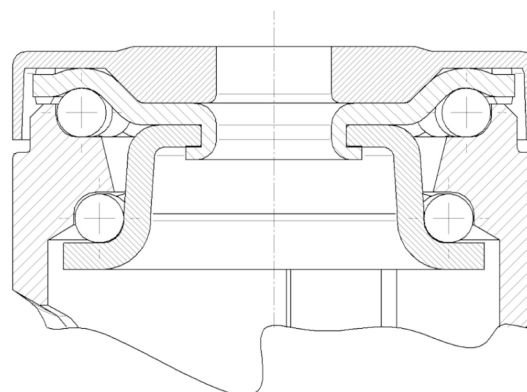
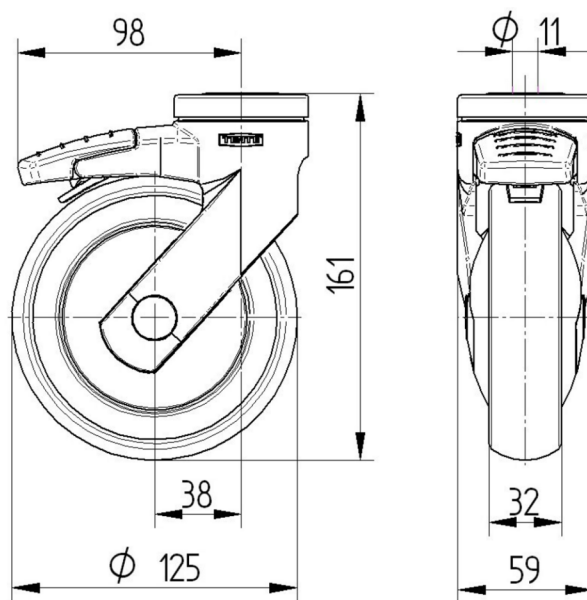
5371PJP125P30-11 7001/6032

EAN 4031582351736
Order number 00038132



BETTER MOBILITY. BETTER LIFE.

TECHNICAL DRAWINGS



Universal
Design
Award



Deutscher
Designer
Club