

OMIKRON TWIN

9958FTP200P68

EAN 4031582316971
Order number 00801187



BETTER MOBILITY. BETTER LIFE.

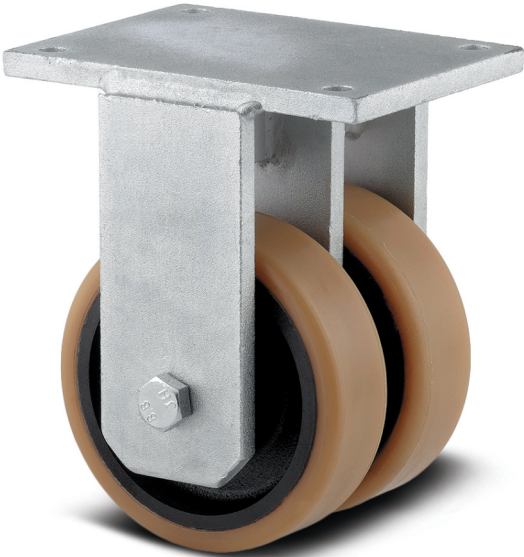


Image may differ from the original product

PERFORMANCE

Roll performance	● ● ● ○ ○
Movement noise	● ● ● ○ ○
Attrition	● ● ● ● ○
Corrosion resistance	● ● ● ● ○

CORE ATTRIBUTES

Product name	Omikron twin
Housing type	Fixed castor
Standard	similar EN12532 - Transport Equipment
Load capacity at 4 km/h	3500 kg
Load capacity at 6 km/h	2800 kg
Load capacity Static	5250 kg
Temperature range (Minimum)	-10 °C
Temperature range (Maximum)	60 °C
Overall height	315 mm
Overall width	272 mm
Overall weight	30.348 kg

WHEEL

Body material	Casting
Tread material	Polyurethane, casted
Bearing	Precision ball bearing
Axle	Screwed with nut
Wheel color	Honey yellow (RAL1005)
Threadguards	With threadguard
Diameter	200 mm
Tread width	80 mm
Body width	80 mm
Hardness of tread (A)	92 Shore A
Hardness of tread (D)	42 Shore D

HOUSING

Material	Cast iron, or iron forged, heavy
Fork shape	Twin wheel housing
Colour	Transparent coating
Dome diameter	235 mm

FITTING

Fitting type	Rectangular plate
Plate length	270 mm
Plate width	250 mm
Plate hole length (Maximum)	210 mm
Plate hole width (Maximum)	230 mm
Plate hole diameter	17 mm

OMIKRON TWIN

9958FTP200P68

EAN 4031582316971
Order number 00801187



BETTER MOBILITY. BETTER LIFE.

TECHNICAL DRAWINGS

