

# OMIKRON TWIN

9958FTP400P68

EAN 4031582317022  
Order number 00801592



BETTER MOBILITY. BETTER LIFE.

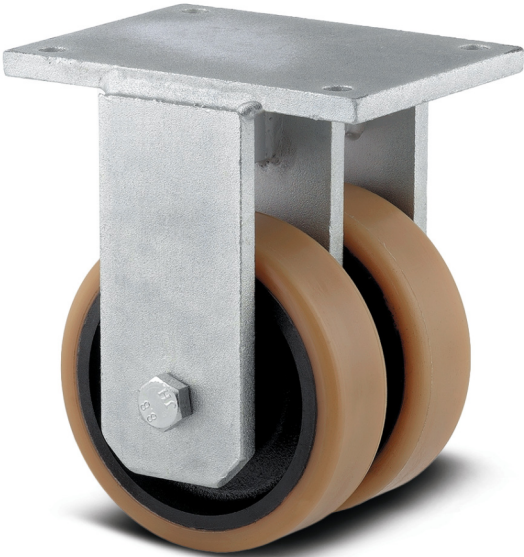


Image may differ from the original product

## PERFORMANCE

Roll performance	● ● ● ○ ○
Movement noise	● ● ● ○ ○
Attrition	● ● ● ● ○
Corrosion resistance	● ● ● ● ○

## CORE ATTRIBUTES

Product name	Omikron twin
Housing type	Fixed castor
Standard	similar EN12532 - Transport Equipment
Load capacity at 4 km/h	7200 kg
Load capacity at 6 km/h	5000 kg
Load capacity Static	10800 kg
Temperature range (Minimum)	-10 °C
Temperature range (Maximum)	60 °C
Overall height	510 mm
Overall width	285 mm
Overall weight	71.436 kg

## WHEEL

Body material	Casting
Tread material	Polyurethane, casted
Bearing	Precision ball bearing
Axle	Screwed with nut
Wheel color	Honey yellow (RAL1005)
Threadguards	With threadguard
Diameter	400 mm
Tread width	80 mm
Body width	80 mm
Hardness of tread (A)	92 Shore A
Hardness of tread (D)	42 Shore D

## HOUSING

Material	Cast iron, or iron forged, heavy
Fork shape	Twin wheel housing
Colour	Transparent coating
Dome diameter	235 mm

## FITTING

Fitting type	Rectangular plate
Plate length	270 mm
Plate width	250 mm
Plate hole length (Maximum)	210 mm
Plate hole width (Maximum)	230 mm
Plate hole diameter	17 mm

# OMIKRON TWIN

9958FTP400P68

EAN 4031582317022  
Order number 00801592



BETTER MOBILITY. BETTER LIFE.

## TECHNICAL DRAWINGS

