

OMIKRON TWIN

9958FTP200P65

EAN 4031582316964
Order number 00801882



BETTER MOBILITY. BETTER LIFE.

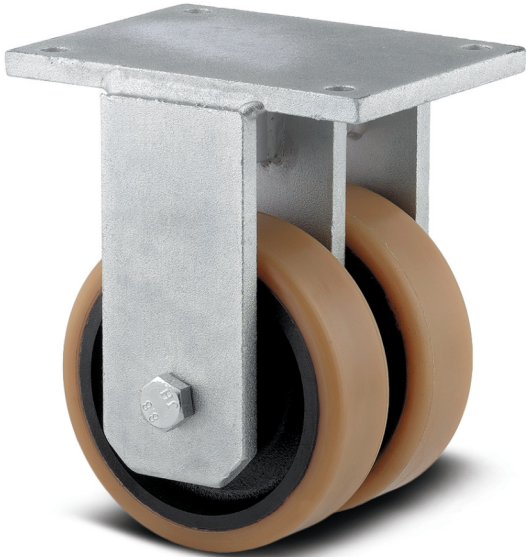


Image may differ from the original product

PERFORMANCE

Roll performance	● ● ● ○ ○
Movement noise	● ● ● ○ ○
Attrition	● ● ● ● ○
Corrosion resistance	● ● ● ● ○

CORE ATTRIBUTES

Product name	Omikron twin
Housing type	Fixed castor
Standard	similar EN12532 - Transport Equipment
Load capacity at 4 km/h	2500 kg
Load capacity at 6 km/h	2000 kg
Load capacity Static	3750 kg
Temperature range (Minimum)	-10 °C
Temperature range (Maximum)	60 °C
Overall height	275 mm
Overall width	154 mm
Overall weight	15.768 kg

WHEEL

Body material	Casting
Tread material	Polyurethane, casted
Bearing	Precision ball bearing
Axle	Screwed with nut
Wheel color	Honey yellow (RAL1005)
Threadguards	With threadguard
Diameter	200 mm
Tread width	50 mm
Body width	50 mm
Hardness of tread (A)	92 Shore A
Hardness of tread (D)	42 Shore D

HOUSING

Material	Cast iron, or iron forged, heavy
Fork shape	Twin wheel housing
Colour	Transparent coating
Dome diameter	160 mm

FITTING

Fitting type	Rectangular plate
Plate length	200 mm
Plate width	160 mm
Plate hole length (Maximum)	120 mm
Plate hole width (Maximum)	160 mm
Plate hole diameter	15 mm

OMIKRON TWIN

9958FTP200P65

EAN 4031582316964
Order number 00801882



BETTER MOBILITY. BETTER LIFE.

TECHNICAL DRAWINGS

