

KAPPA

9688ITP160P63 CL67

EAN 4031582316483
Order number 00802073



BETTER MOBILITY. BETTER LIFE.

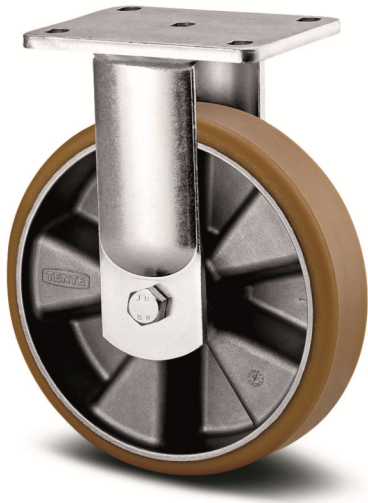


Image may differ from the original product

PERFORMANCE

Roll performance	● ● ● ● ○
Movement noise	● ● ● ○ ○
Attrition	● ● ● ● ○
Corrosion resistance	● ● ● ● ○

CORE ATTRIBUTES

Product name	Kappa
Housing type	Fixed castor
Standard	EN12532 - Transport Equipment
Load capacity at 4 km/h	1763.7 lb
Load capacity at 6 km/h	1410.96 lb
Load capacity Static	3527.39 lb
Temperature range (Minimum)	14 °F
Temperature range (Maximum)	140 °F
Overall height	8.07 in
Overall width	3.86 in
Overall weight	6.54 lb

WHEEL

Body material	Aluminum
Tread material	Polyurethane, casted
Bearing	Precision ball bearing
Axle	Screwed with nut
Wheel color	Honey yellow (RAL1005)
Threadguards	With threadguard
Diameter	6.3 in
Tread width	1.97 in
Body width	1.97 in
Hardness of tread (A)	92 Shore A
Hardness of tread (D)	42 Shore D

HOUSING

Material	Cast iron, or iron forged, heavy
Fork shape	Broad, reinforced
Color	Blue passivated
Dome diameter	3.78 in

FITTING

Fitting type	Rectangular plate
Plate length	5.31 in
Plate width	4.33 in
Plate hole length (Minimum)	2.95 in
Plate hole length (Maximum)	3.15 in
Plate hole width (Minimum)	2.95 in
Plate hole width (Maximum)	4.13 in
Plate hole diameter	0.43 in

KAPPA

9688ITP160P63 CL67

EAN 4031582316483
Order number 00802073



BETTER MOBILITY. BETTER LIFE.

TECHNICAL DRAWINGS

