

# KAPPA

9688ITP200P63 CL67

EAN 4031582316506  
Order number 00802076



BETTER MOBILITY. BETTER LIFE.

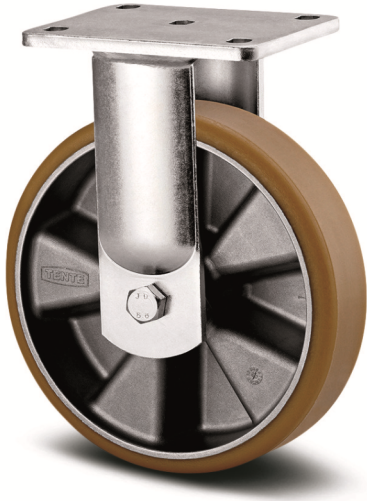


Image may differ from the original product

## PERFORMANCE

Roll performance	● ● ● ● ○
Movement noise	● ● ● ○ ○
Attrition	● ● ● ● ○
Corrosion resistance	● ● ● ● ○

## CORE ATTRIBUTES

Product name	Kappa
Housing type	Fixed castor
Standard	EN12532 - Transport Equipment
Load capacity at 4 km/h	800 kg
Load capacity at 6 km/h	640 kg
Load capacity Static	1600 kg
Temperature range (Minimum)	-10 °C
Temperature range (Maximum)	60 °C
Overall height	245 mm
Overall width	98 mm
Overall weight	3.301 kg

## WHEEL

Body material	Aluminium
Tread material	Polyurethane, casted
Bearing	Precision ball bearing
Axle	Screwed with nut
Wheel color	Honey yellow (RAL1005)
Threadguards	With threadguard
Diameter	200 mm
Tread width	50 mm
Body width	50 mm
Hardness of tread (A)	92 Shore A
Hardness of tread (D)	42 Shore D

## HOUSING

Material	Cast iron, or iron forged, heavy
Fork shape	Broad, reinforced
Colour	Blue passivated
Dome diameter	96 mm

## FITTING

Fitting type	Rectangular plate
Plate length	135 mm
Plate width	110 mm
Plate hole length (Minimum)	75 mm
Plate hole length (Maximum)	80 mm
Plate hole width (Minimum)	75 mm
Plate hole width (Maximum)	105 mm
Plate hole diameter	11 mm

# KAPPA

9688ITP200P63 CL67

EAN 4031582316506  
Order number 00802076



BETTER MOBILITY. BETTER LIFE.

## TECHNICAL DRAWINGS

