

# OMIKRON TWIN

9958TOP200P65

EAN 4031582317084  
Order number 00806461



BETTER MOBILITY. BETTER LIFE.

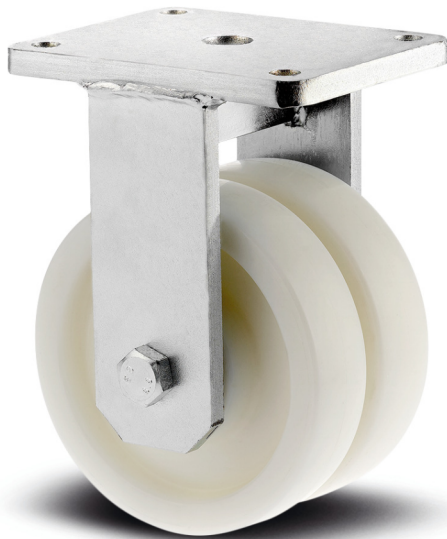


Image may differ from the original product

## PERFORMANCE

Roll performance	● ● ● ○ ○
Movement noise	● ● ● ○ ○
Attrition	● ● ● ● ○
Corrosion resistance	● ● ● ● ○

## CORE ATTRIBUTES

Product name	Omikron twin
Housing type	Fixed castor
Standard	EN12533 - Heavy Duty Castors
Load capacity at 4 km/h	5291.09 lb
Load capacity at 6 km/h	4409.24 lb
Load capacity Static	10582.18 lb
Temperature range (Minimum)	-40 °F
Temperature range (Maximum)	185 °F
Overall height	10.83 in
Overall width	7.44 in
Overall weight	23.97 lb

## WHEEL

Body material	Polyamide, heavy
Tread material	Identical with wheel body
Bearing	Precision ball bearing
Axle	Screwed with nut
Wheel color	Natural white
Threadguards	With threadguard
Diameter	7.87 in
Tread width	1.97 in
Body width	1.97 in
Hardness of tread (D)	75 Shore D

## HOUSING

Material	Cast iron, or iron forged, heavy
Fork shape	Twin wheel housing
Color	Transparent coating
Dome diameter	6.3 in

## FITTING

Fitting type	Rectangular plate
Plate length	7.87 in
Plate width	6.3 in
Plate hole length (Maximum)	4.72 in
Plate hole width (Maximum)	6.3 in
Plate hole diameter	0.59 in

# OMIKRON TWIN

9958TOP200P65

EAN 4031582317084  
Order number 00806461



BETTER MOBILITY. BETTER LIFE.

## TECHNICAL DRAWINGS

