

# OMIKRON TWIN

9958FTP150P65

EAN 4031582316940  
Order number 00806805



BETTER MOBILITY. BETTER LIFE.

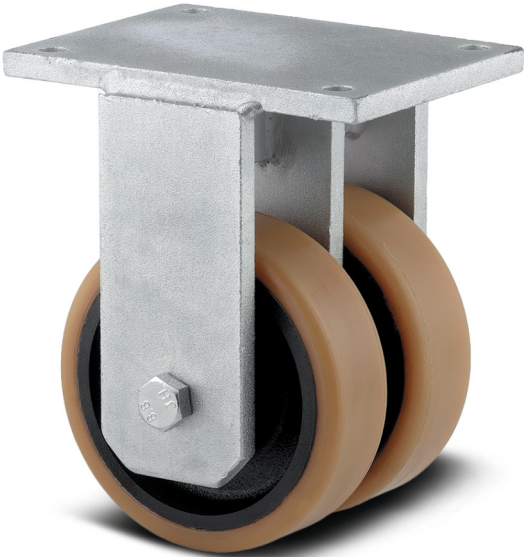


Image may differ from the original product

## PERFORMANCE

Roll performance	● ● ● ○ ○
Movement noise	● ● ● ○ ○
Attrition	● ● ● ● ○
Corrosion resistance	● ● ● ● ○

## CORE ATTRIBUTES

Product name	Omikron twin
Housing type	Fixed castor
Standard	similar EN12532 - Transport Equipment
Load capacity at 4 km/h	3968.32 lb
Load capacity at 6 km/h	3086.47 lb
Load capacity Static	5952.47 lb
Temperature range (Minimum)	14 °F
Temperature range (Maximum)	140 °F
Overall height	9.06 in
Overall width	7.44 in
Overall weight	30.67 lb

## WHEEL

Body material	Casting
Tread material	Polyurethane, casted
Bearing	Precision ball bearing
Axle	Screwed with nut
Wheel color	Honey yellow (RAL1005)
Threadguards	With threadguard
Diameter	5.91 in
Tread width	1.97 in
Body width	1.97 in
Hardness of tread (A)	92 Shore A
Hardness of tread (D)	42 Shore D

## HOUSING

Material	Cast iron, or iron forged, heavy
Fork shape	Twin wheel housing
Color	Transparent coating
Dome diameter	6.3 in

## FITTING

Fitting type	Rectangular plate
Plate length	7.87 in
Plate width	6.3 in
Plate hole length (Maximum)	4.72 in
Plate hole width (Maximum)	6.3 in
Plate hole diameter	0.59 in

# OMIKRON TWIN

9958FTP150P65

EAN 4031582316940  
Order number 00806805



BETTER MOBILITY. BETTER LIFE.

## TECHNICAL DRAWINGS

