

OMIKRON TWIN

9958FTP160P65

EAN 4031582316957
Order number 00827824



BETTER MOBILITY. BETTER LIFE.

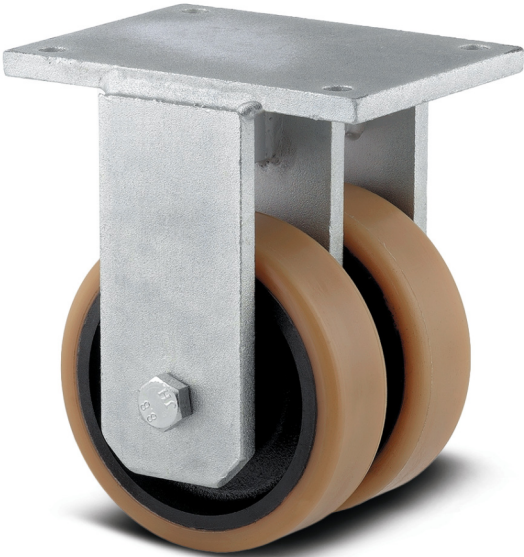


Image may differ from the original product

PERFORMANCE

Roll performance	● ● ● ○ ○
Movement noise	● ● ● ○ ○
Attrition	● ● ● ● ○
Corrosion resistance	● ● ● ● ○

CORE ATTRIBUTES

Product name	Omikron twin
Housing type	Fixed castor
Standard	similar EN12532 - Transport Equipment
Load capacity at 4 km/h	2000 kg
Load capacity at 6 km/h	1500 kg
Load capacity Static	3000 kg
Temperature range (Minimum)	-10 °C
Temperature range (Maximum)	60 °C
Overall height	235 mm
Overall width	189 mm
Overall weight	12.481 kg

WHEEL

Body material	Casting
Tread material	Polyurethane, casted
Bearing	Precision ball bearing
Axle	Screwed with nut
Wheel color	Honey yellow (RAL1005)
Threadguards	With threadguard
Diameter	160 mm
Tread width	50 mm
Body width	50 mm
Hardness of tread (A)	92 Shore A
Hardness of tread (D)	42 Shore D

HOUSING

Material	Cast iron, or iron forged, heavy
Fork shape	Twin wheel housing
Colour	Transparent coating
Dome diameter	160 mm

FITTING

Fitting type	Rectangular plate
Plate length	200 mm
Plate width	160 mm
Plate hole length (Maximum)	120 mm
Plate hole width (Maximum)	160 mm
Plate hole diameter	15 mm

OMIKRON TWIN

9958FTP160P65

EAN 4031582316957
Order number 00827824



BETTER MOBILITY. BETTER LIFE.

TECHNICAL DRAWINGS

