

OMIKRON TWIN

9958TOP250P65

EAN 4031582317091
Order number 00828560



BETTER MOBILITY. BETTER LIFE.

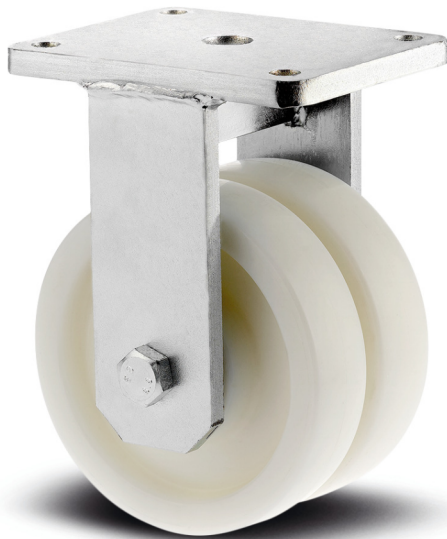


Image may differ from the original product

PERFORMANCE

| | |
|----------------------|-----------|
| Roll performance | ● ● ● ○ ○ |
| Movement noise | ● ● ● ○ ○ |
| Attrition | ● ● ● ● ○ |
| Corrosion resistance | ● ● ● ● ○ |

CORE ATTRIBUTES

| | |
|-----------------------------|------------------------------|
| Product name | Omikron twin |
| Housing type | Fixed castor |
| Standard | EN12533 - Heavy Duty Castors |
| Load capacity at 4 km/h | 2640 kg |
| Load capacity at 6 km/h | 2200 kg |
| Load capacity Static | 5280 kg |
| Temperature range (Minimum) | -40 °C |
| Temperature range (Maximum) | 85 °C |
| Overall height | 325 mm |
| Overall width | 192 mm |
| Overall weight | 11.712 kg |

WHEEL

| | |
|-----------------------|---------------------------|
| Body material | Polyamide, heavy |
| Tread material | Identical with wheel body |
| Bearing | Precision ball bearing |
| Axle | Screwed with nut |
| Wheel color | Natural white |
| Threadguards | With threadguard |
| Diameter | 250 mm |
| Tread width | 50 mm |
| Body width | 50 mm |
| Hardness of tread (D) | 75 Shore D |

HOUSING

| | |
|---------------|----------------------------------|
| Material | Cast iron, or iron forged, heavy |
| Fork shape | Twin wheel housing |
| Colour | Transparent coating |
| Dome diameter | 160 mm |

FITTING

| | |
|-----------------------------|-------------------|
| Fitting type | Rectangular plate |
| Plate length | 200 mm |
| Plate width | 160 mm |
| Plate hole length (Maximum) | 120 mm |
| Plate hole width (Maximum) | 160 mm |
| Plate hole diameter | 15 mm |

OMIKRON TWIN

9958TOP250P65

EAN 4031582317091
Order number 00828560



BETTER MOBILITY. BETTER LIFE.

TECHNICAL DRAWINGS

