

# OMIKRON TWIN

9958TOP150P65

EAN 4031582317060  
Order number 00830651



BETTER MOBILITY. BETTER LIFE.

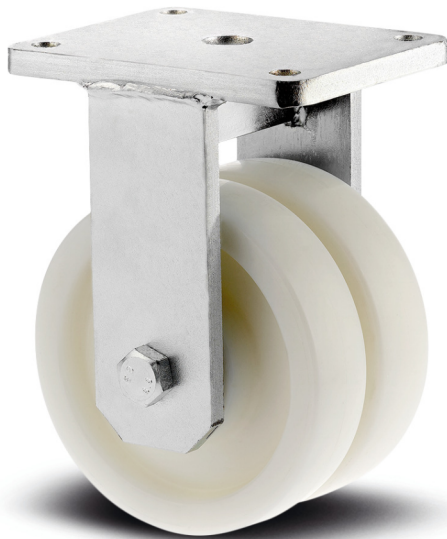


Image may differ from the original product

## PERFORMANCE

Roll performance	● ● ● ○ ○
Movement noise	● ● ● ○ ○
Attrition	● ● ● ● ○
Corrosion resistance	● ● ● ● ○

## CORE ATTRIBUTES

Product name	Omikron twin
Housing type	Fixed castor
Standard	EN12533 - Heavy Duty Castors
Load capacity at 4 km/h	1920 kg
Load capacity at 6 km/h	1600 kg
Load capacity Static	3840 kg
Temperature range (Minimum)	-40 °C
Temperature range (Maximum)	85 °C
Overall height	230 mm
Overall width	189 mm
Overall weight	8.721 kg

## WHEEL

Body material	Polyamide, heavy
Tread material	Identical with wheel body
Bearing	Precision ball bearing
Axle	Screwed with nut
Wheel color	Natural white
Threadguards	With threadguard
Diameter	150 mm
Tread width	50 mm
Body width	50 mm
Hardness of tread (D)	75 Shore D

## HOUSING

Material	Cast iron, or iron forged, heavy
Fork shape	Twin wheel housing
Colour	Transparent coating
Dome diameter	160 mm

## FITTING

Fitting type	Rectangular plate
Plate length	200 mm
Plate width	160 mm
Plate hole length (Maximum)	120 mm
Plate hole width (Maximum)	160 mm
Plate hole diameter	15 mm

# OMIKRON TWIN

9958TOP150P65

EAN 4031582317060  
Order number 00830651



BETTER MOBILITY. BETTER LIFE.

## TECHNICAL DRAWINGS

