

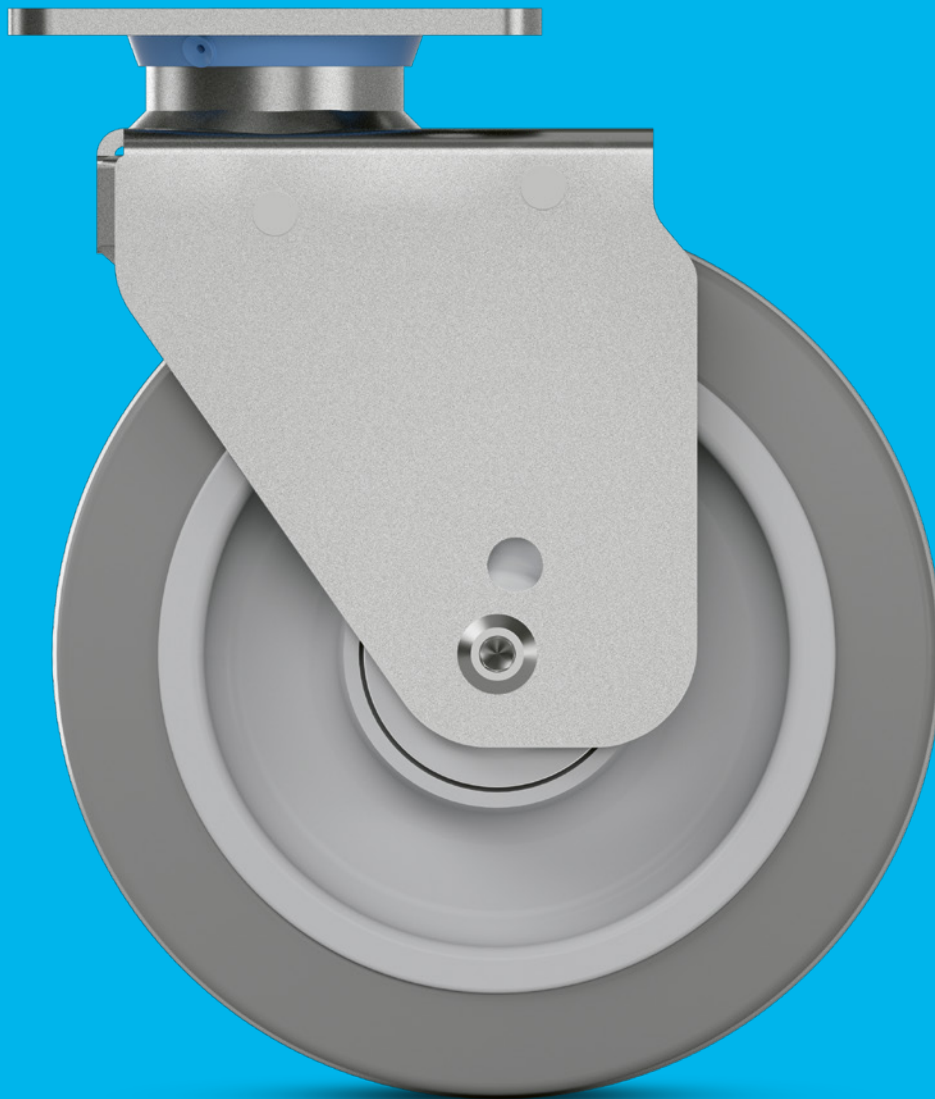
PRODUCT INFORMATION

SCOUT

 150 - 350 kg

 202 - 245 mm

 160 - 200 mm

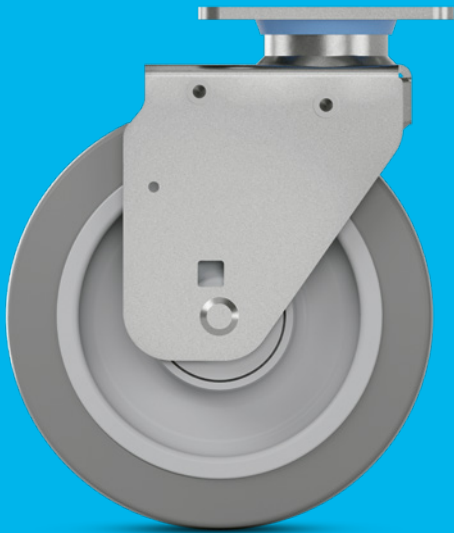


TENTE

BETTER MOBILITY. BETTER LIFE.

HOUSINGS

PAGES: 4-7



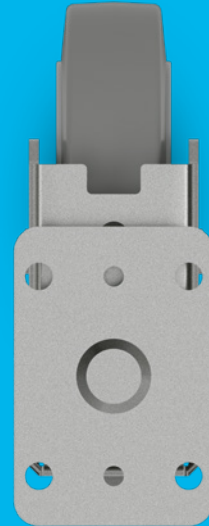
WHEELS

PAGES: 8-11



FITTINGS

PAGES: 12-14



BETTER MOBILITY IN PREMIUM QUALITY

TENTE believes in smart mobility solutions which noticeably improve people's lives and their work environment. TENTE solutions increase productivity, ensure safety and open up new horizons in matters of design and durability as well as environmental friendliness. Leading manufacturers and companies of different industries rely on these competencies and our high production quality.

On the following pages you will find technical information of our Scout product family. We will also demonstrate the added value this mobility solution offers to your organisation. Among others:

Autonomous transport

Optimised for the high demands of automatic guided vehicles.

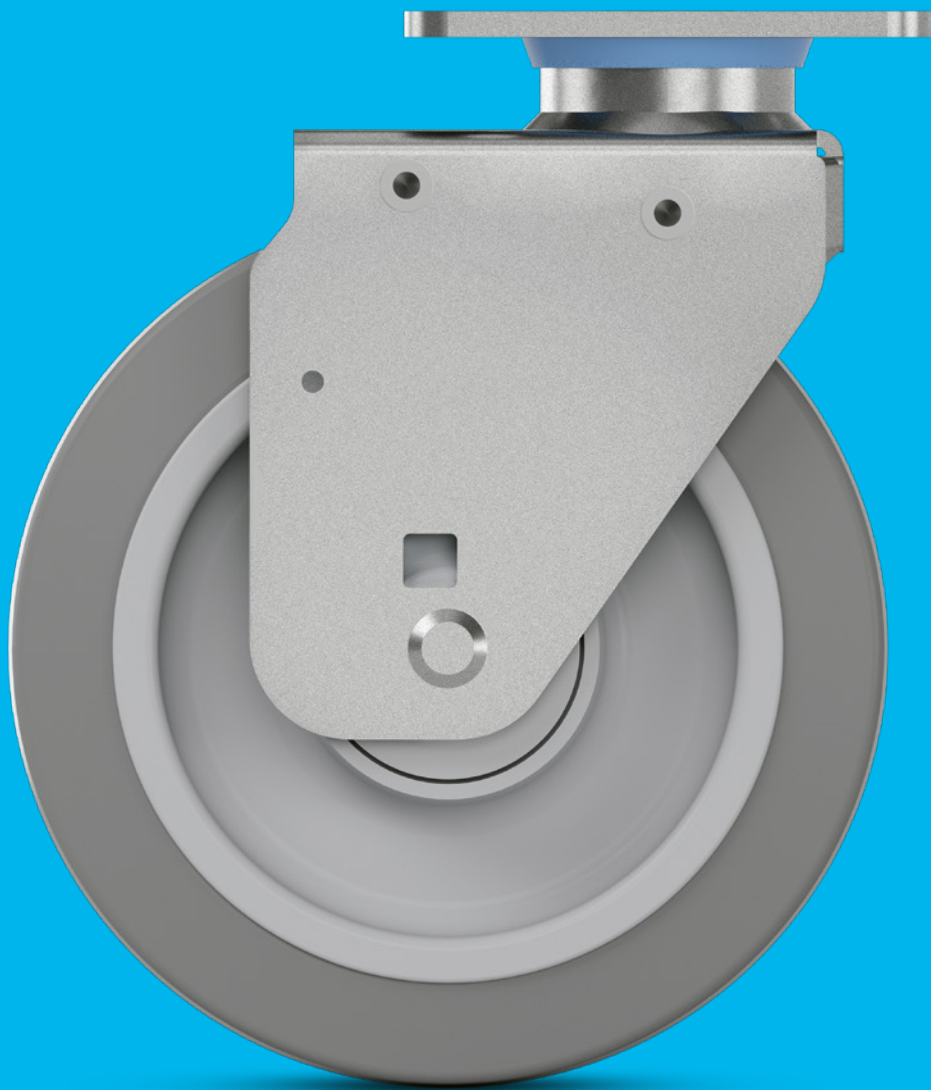
Permanent washability

All metal components made of stainless steel.

Reduced accident risk

Slim design to avoid collisions in narrow passages.

HOUSINGS



FEATURES



Optimised steering mechanism

Directional lock for improved steering around bends, as well as moving in a straight line over long distances.



Autonomous transport

Optimised for the high demands of automatic guided vehicles.



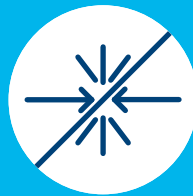
Flexible lock function

Use of two independent actuation systems in one castor.



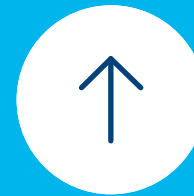
Quick maintenance

The swivel bearing is lubricated with long-life grease and is fitted with a grease dispenser for easy maintenance.



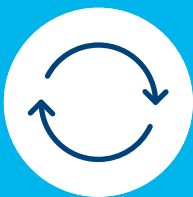
Reduced accident risk

Slim design to avoid collisions in narrow passages.



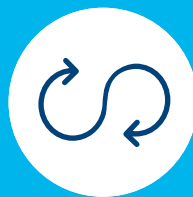
Automatic alignment

When picked up, the castor is automatically aligned in the direction of travel.



Easy steering

Precision ball bearing in swivel head for excellent rotational properties under high loads.



Uninterrupted use

Swivel bearing with dust ring for continuous, uninterrupted movement.



User-friendly brake

Simple ball-pen operation to engage or disengage the wheel brake.

HOUSINGS

The housing is made of stainless steel with a slim fork shape. The slim design reduces the risk of accidents as it helps to avoid collisions in narrow passages. The swivel bearing is equipped with a dust ring which allows continuous, uninterrupted movement. Additionally, the swivel bearing is lubricated with long-life grease and fitted with a grease dispenser. This makes a quick and effortless maintenance possible.



Swivel castor

Wheel and housing are free to move for easy manoeuvrability.



Wheel brake

Manually operated wheel lock prevents unintended movement.



Directional lock

Directional lock for improved steering around bends, as well as movement in a straight line for long distances.



Fixed castor

The wheel is free and the housing fixed; it cannot swivel but only moves forwards and backwards and allows a stable movement.



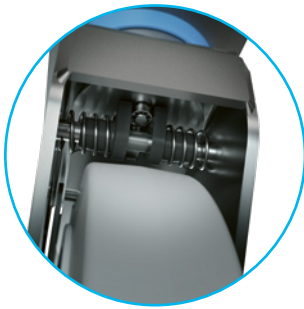
Washability

The housings is made of stainless steel and can easily be washed and cleaned.



User-friendly brake

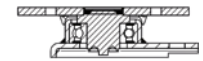
Simple ball-pen operation to engage or disengage the wheel brake; the brake can be activated and deactivated with minimal force, making it easy to use.



Automatic alignment

The housing is equipped with a spring for automatic alignment. It is also perfect for the use of automatic guided vehicles. Whenever the castor is picked up, it automatically aligns in the direction of travel which avoids damage and reduces maintenance costs.

Swivel bearings



Precision ball bearing for best manoeuvrability.

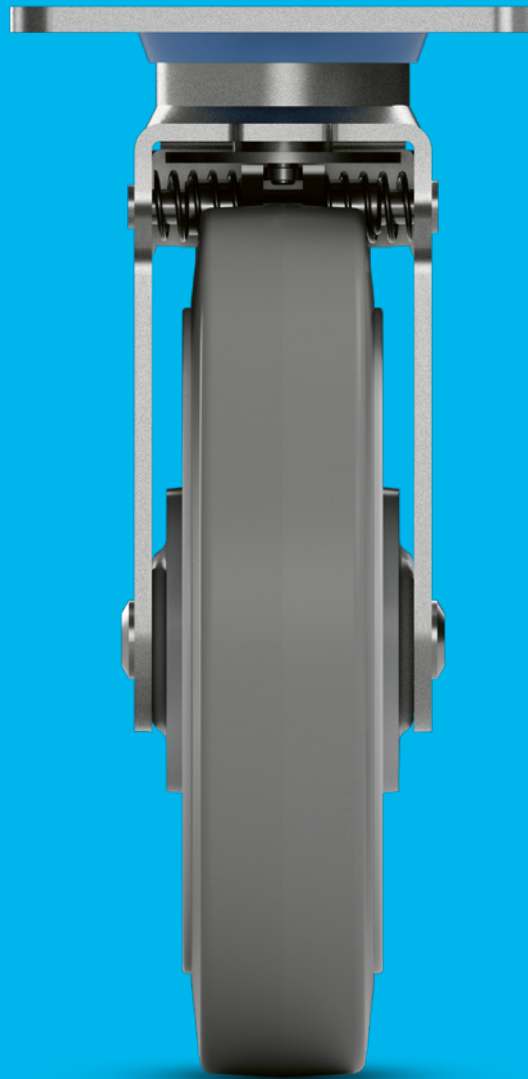
Technical data and availability



Description	Housing type	Fixed castor	Swivel castor	Swivel castor with wheel brake	Swivel castor with directional lock
	Article description	8148	814S	814W	8141
	Automatic alignment	-	2 x 180°	2 x 180°	2 x 180°
	Material	Stainless steel	Stainless steel	Stainless steel	Stainless steel
	Swivel bearing	-	Precision ball bearing	Precision ball bearing	Precision ball bearing
Swivel interference	Wheel Ø 160 mm	●	270 mm	270 mm	270 mm
	Wheel Ø 200 mm	●	300 mm	325 mm	300 mm

Items with this sign "●" are available. Items with this sign "-" are not available in our standard range. Please contact us.

WHEELS



FEATURES



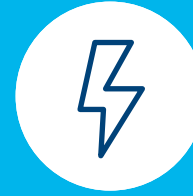
Low-vibration transport

Extra soft wheels with good shock-absorbing properties.



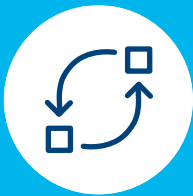
Ergonomically friendly use

Wheels with optimised roll resistance to lighten the load for the user.



Certified conductivity

Conductive version to protect users and electrical devices from electrostatic discharge.



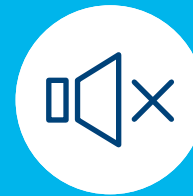
Resource-conserving part replacement

Threaded axles allow effortless wheel change.



Protective seal

Wheels with sealed and stainless bearings to protect against spray water and dirt.



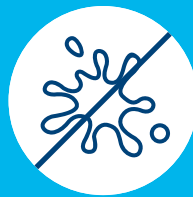
Quiet rolling

Soft wheel versions for a quiet working environment.



Non-marking movement

Wheels with reduced abrasion and little cleaning requirement.



Non-staining operation

Non-staining on contact with floors when left standing for long periods.



Low-maintenance wheels

Thread guards for unobstructed operation with minimal cleaning effort.

WHEELS

The wheels for our Scout family are available in different styles from the very soft Elastech versions to versatile Maxtech wheels – depending on your individual requirements and application. Additionally, all wheels have outstanding rolling and swivelling characteristics and allow for easy handling. All wheels have sealed stainless steel bearings to protect against spray water and dirt to allow a permanent washability.



Maxtech

Solid wheel for long-lasting use in different shore hardnesses. Ideal material properties for every purpose.



Elastech

Quiet rolling wheel with non-marking elastic tyre for smooth handling properties. Easy to navigate around obstacles.



Certified conductivity

There are different wheels available in a conductive version – they protect users and electrical devices from electrostatic discharge and allow a safe transport of your goods to ensure highest working safety.





Load capacity

The load capacity depends on the housing and wheel. It has been tested based on EN 12532 with reduced obstacle height and fulfills the requirements at a speed of 4 km/h. When using four castors, you can calculate the necessary load capacity as follows: The sum of the weight of your application plus the additional load divided by three castors.

$$\frac{\text{Weight of application + load}}{3} = \text{Load capacity of one castor}$$

Technical data and availability



Description	 Product name	Maxtech	Maxtech conductive	Maxtech soft	Maxtech soft conductive	Elastech
	Article description	UAC	USC	UAC	USC	UFC
	Tread material	Polyurethane, injected	Polyurethane, injected	Polyurethane, injected	Polyurethane, injected	Non-marking elastic tyre, vulcanized
	Tread hardness	Shore A 95	Shore A 95	Shore A 85	Shore A 85	Shore A 64
	Wheel body material	Polyamide, injected	Polyamide, injected	Polyamide, injected	Polyamide, injected	Polyamide, injected
	Temperature range	-40 °C / +80 °C	-40 °C / +80 °C	-40 °C / +80 °C	-40 °C / +80 °C	-20 °C / +80 °C
	Hub length	60 mm	60 mm	60 mm	60 mm	58 mm
	Width of wheel	40 mm	40 mm	40 mm	40 mm	46 mm
	Width of tread	40 mm	40 mm	40 mm	40 mm	40 mm
	Electric conductive (10 ⁴ OHM)	-	●	-	●	-
	Washable***	●	●	●	●	●
Bearing type	 Plain bearing	-	-	-	-	-
	Roller bearing	-	-	-	-	-
	Cone ball bearing	-	-	-	-	-
	Precision ball bearing	● Sealed, stainless steel	● Sealed, stainless steel	● Sealed, stainless steel	● Sealed, stainless steel	● Sealed, stainless steel
Load capacity**	Wheel Ø 160 mm	150 kg* 350 kg	150 kg* 350 kg	150 kg* 350 kg	150 kg* 350 kg	150 kg* 350 kg
	Wheel Ø 200 mm	150 kg* 350 kg	150 kg* 350 kg	150 kg* 350 kg	150 kg* 350 kg	150 kg* 350 kg

Items with this sign "●" are available. Items with this sign "-" are not available in our standard range. Please contact us.

The mentioned load capacity is only valid for the Scout product family. The load capacity of a single wheel without housing could be different.

* Scout smart version: The Scout is also available as Scout smart version with an optimized housing and less load capacity.

** Load capacity based on EN 12532

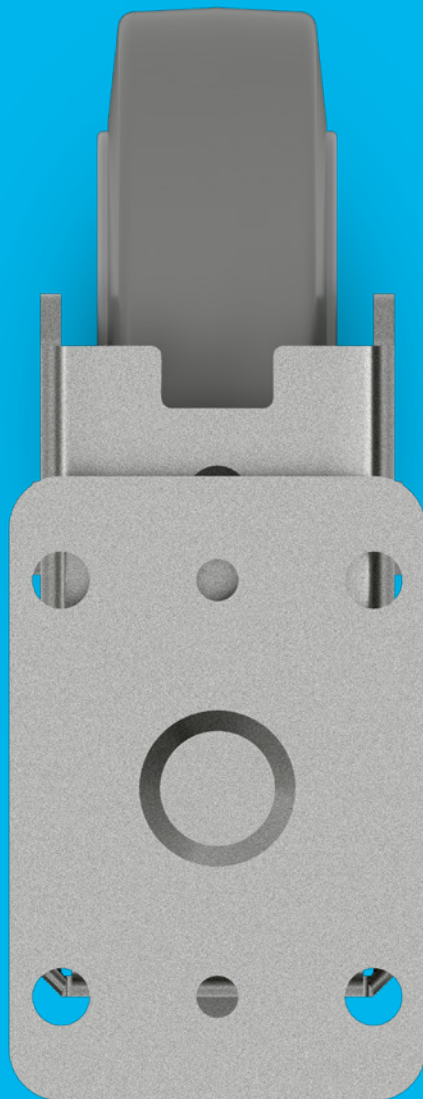
*** Washable versions with metal components made of stainless steel.

Bearing type

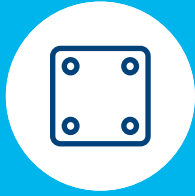


Precision ball bearing,
stainless steel, sealed

FITTINGS



FEATURES



Variable fitting options

Different plate dimensions for your individual needs.



Easy installation

The castors can be assembled easily with just four screws.



Tested quality

Tested in our own laboratory.



Permanent washability

All metal components made of stainless steel.

PLATE FITTINGS

Our mounting plates are easy to install and connection can be secured with just four screws. The plates are available in different sizes. All mounting plates are made of stainless steel which ensures a permanent washability without having to disassemble the castors.



Different plate options

Different plate options available to fit to your individual needs.

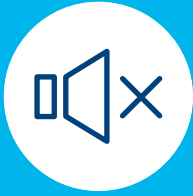
Technical data and availability



Description	Fitting type	Swivel plate	Swivel plate	Swivel plate	Fixed plate
	Article description	P60	P62	P63	P60
	Size of plate	130 x 74 mm	120 x 80 mm	130 x 110 mm	130 x 74 mm
	Plate hole centres	110 x 50 mm	80 x 60 mm	105 x 75/80 mm	110 x 50 mm
	Plate hole \varnothing	10,5 mm	11 mm	11 mm	10,5 mm
	Plate thickness	4 mm* 6 mm	4 mm* 6 mm	4 mm* 6 mm	4 mm* 6 mm
Overall height	Wheel \varnothing 160 mm	202 mm* 205 mm	202 mm* 205 mm	202 mm* 205 mm	202 mm* 205 mm
	Wheel \varnothing 200 mm	242 mm* 245 mm	242 mm* 245 mm	242 mm* 245 mm	242 mm* 245 mm

* Scout smart version: The Scout is also available as Scout smart version with an optimized housing and less load capacity.

ADDITIONAL FEATURES



Perfect noise reduction

The wheels are available with different materials and different shore hardnesses for a quiet working environment.



Non-hazardous materials

Complies with the RoHS directive and REACH regulation from the European Union. Does not contain polycyclic aromatic hydrocarbons or chromium (VI).



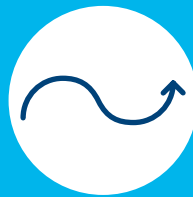
Reduced cleaning

Thanks to their smooth surfaces, the castors are quick and easy to clean.



Washability

All wheels are protected against dirt and spray water and can easily be washed and cleaned.



Optimised manoeuvrability

Low rolling and swivelling resistance ensures excellent performance.



Colour matching

Colours can be adapted to match the product design.



Individual branding

They can be engraved, casted or printed.

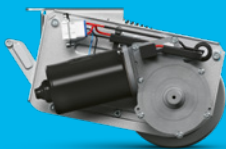
DIVERSITY WITH A SYSTEM

OUR CASTORS

All of our products have their own specific qualities and strengths. Whether it's high design standards, specialist applications or exceptional load capacities – our range can meet your needs and can be adapted to fit different models.

From the correct dimensions and technical specifications to the required configuration, our product families are able to offer the ideal solution – whatever you need. Contact us for more information or visit our website: www.tente.com

E-Drive



⌀ 125 mm

Alpha



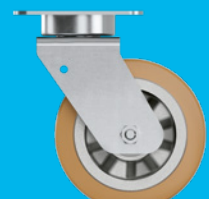
⊃ 70 - 500 kg
⌀ 80 - 200 mm

Delta



⊃ 300 - 600 kg
⌀ 125 - 200 mm

Delta twin



⊃ 600 - 750 kg
⌀ 125 - 200 mm

Zeta



⊃ 300 - 800 kg
⌀ 125 - 250 mm

Kappa



⊃ 300 - 2.000 kg
⌀ 80 - 300 mm

Kappa flex



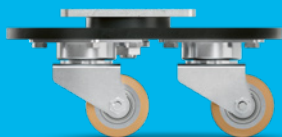
⊃ 360 - 750 kg
⌀ 160 - 200 mm

Omikron



⊃ 900 - 11.000 kg
⌀ 100 - 500 mm

Radiata



1.200 - 1.500 kg
80 mm

Scout



150 - 350 kg
160 - 200 mm

Integral



100 - 150 kg
100 - 200 mm

Integral twin



125 - 250 kg
100 - 150 mm

Linea clinic



150 - 200 kg
125 - 150 mm

Aviana care



100 kg
75 mm

Aviana



75 mm

Agila



40 - 100 kg
50 - 150 mm

Agila twin



50 - 100 kg
50 - 75 mm

Stora



60 - 160 kg
75 - 160 mm

Mono



30 - 70 kg
50 - 100 mm

Galea



60 - 100 kg
100 - 125 mm

Levina



60 - 100 kg
75 - 150 mm

Linea



40 - 150 kg
50 - 150 mm

Anika



40 - 50 kg
55 - 75 mm

Lumina



30 - 100 kg
35 - 75 mm

Stylea



40 - 100 kg
35 - 100 mm

Smiles



40 kg
50 mm

Compacta



10 - 55 kg
14 - 50 mm

EXPERTISE THAT INSPIRES

CONTACT US

We are a globally operating company supporting you on five continents. This means on-site support with service on a level playing field – along with in-depth knowledge. Additionally, our solution experts will advise you on the best mobility concept for your needs. Go here to find your nearest TENTE location: www.tente.com/locations

INCREASE YOUR EFFICIENCY

Our intelligent mobility solutions help you save time, effort, energy, and operating expenses. This allows you to improve your operating methods and working conditions, thereby optimising your processes and ensuring higher productivity, profitability and safety. Ask for our solutions catalogue or read about how our customers benefit from our tailor-made solutions on our website: www.tente.com/solutions

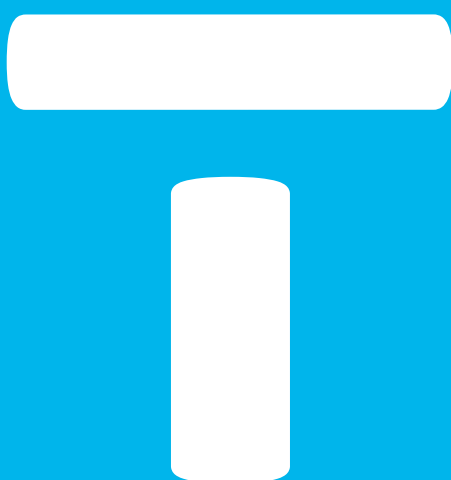
SAVE DEVELOPMENT TIME

On our website you will find technical drawings, product data sheets and 2D and 3D CAD files in various formats: www.tente.com/scout

GET MORE INFORMATION

In addition to our informative website, you can easily download various catalogues and brochures on mobility solutions, customer references, and much more: www.tente.com/download





www.tente.com



PRODUCTIVITY



SAFETY



DESIGN



DURABILITY



ENVIRONMENT