

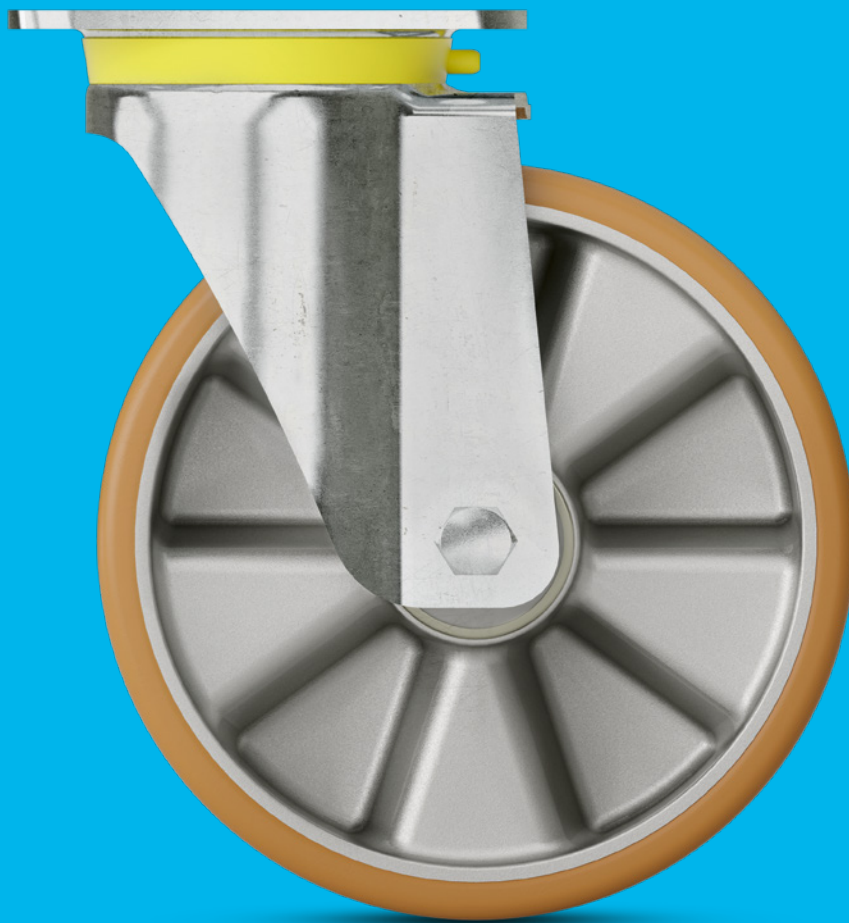
# PRODUCT INFORMATION

## ZETA

 300 - 800 kg

 164 - 290 mm

 125 - 250 mm



**TENTE**

BETTER MOBILITY. BETTER LIFE.

# HOUSINGS

PAGES: 4-9

# WHEELS

PAGES: 10-15

# FITTINGS

PAGES: 16-19



# BETTER MOBILITY IN PREMIUM QUALITY

TENTE believes in smart mobility solutions which noticeably improve people's lives and their work environment. TENTE solutions increase productivity, ensure safety and open up new horizons in matters of design and durability as well as environmental friendliness. Leading manufacturers and companies of different industries rely on these competencies and our high production quality.

On the following pages you will find technical information about our Zeta product family. We will also demonstrate the added value this mobility solution offers to your organisation.

## **Ergonomic foot pedal**

Easily accessible and extra long operating pedal for manual directional lock.

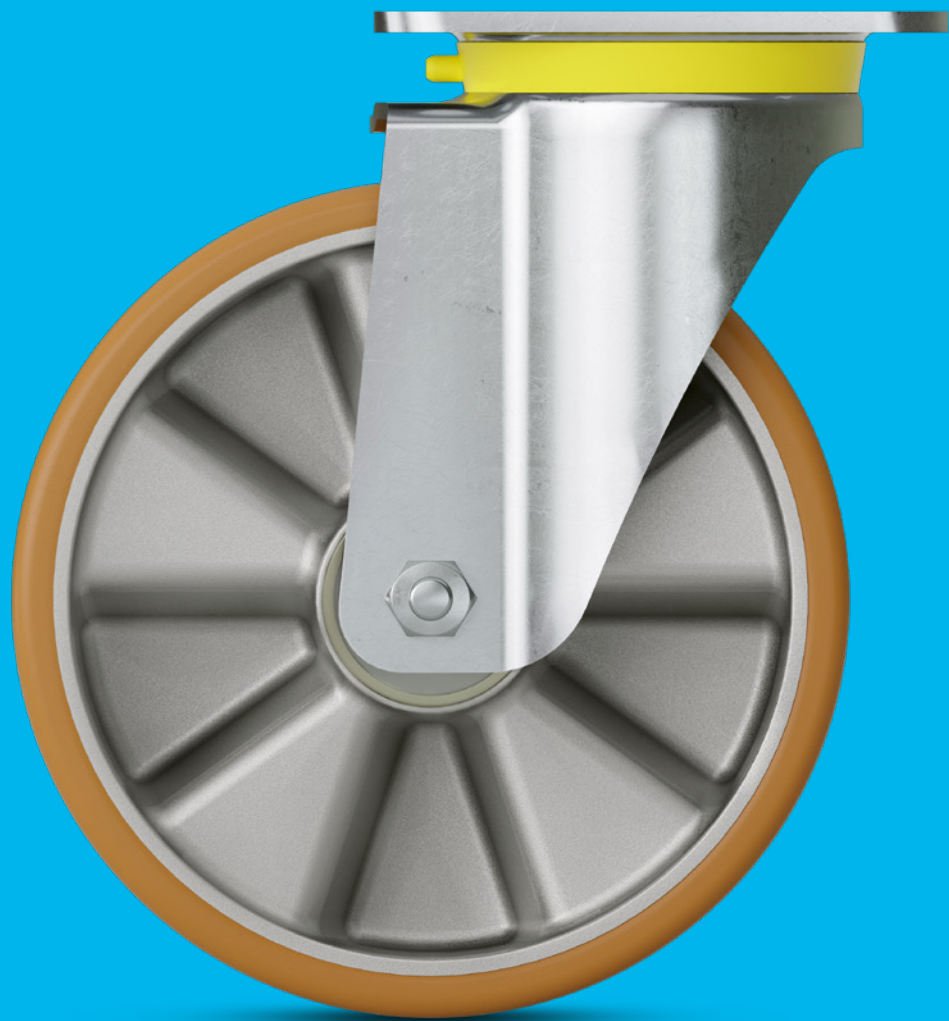
## **Optimised directional lock**

Directional lock can be adjusted to 2 x 180° to meet your requirements.

## **Automatic alignment**

When picked up, the castor is automatically aligned in the direction of travel.

# HOUSINGS



# FEATURES



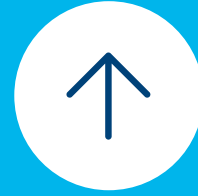
## Optimised steering mechanism

Directional lock for improved steering around bends, as well as moving in a straight line for tugger trains.



## Increased occupational safety

Partially elastic foot protection to reduce accidents. Also used on uneven floors.



## Automatic alignment

When picked up, the castor is automatically aligned in the direction of travel.



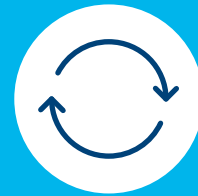
## Ergonomic foot pedal

Easily accessible operating pedal for manual directional lock.



## Secured stand

Total lock for simultaneously locking the wheel and swivel housing.



## Easy steering

Double ball bearing swivel head.



## Heavy duty construction

Extra heavy steel housing for high load capacity.



## Quick maintenance

The swivel bearing is lubricated with long-life grease and is fitted with a grease dispenser for easy maintenance.



## Optimised directional lock

Directional lock can be adjusted to 2 x 180° to meet your requirements.

# HOUSINGS

The housing is made of reinforced extra heavy pressed steel for high load capacity. Easy steering can be guaranteed by two hardened ball races in the swivel head which are lubricated with long-life grease and fitted with a grease dispenser for easy maintenance. The swivel bearing has a dust ring for continuous, uninterrupted movement.



## Swivel castor

Swivel housing for easy manoeuvrability in all directions.



## Automatic directional stability

Whenever the castor is picked up, it automatically aligns in the direction of travel.

## Automatic directional stability

The housing is equipped with two springs for automatic alignment in 2 x 180° position. It is also perfect for the use of automatic guided vehicles. Whenever the castor is picked up, it automatically aligns in the direction of travel. This avoids damage and reduces maintenance costs. Contact us to see how to adjust the 2 x 180° position to fit your requirements.





**Directional lock**

Directional lock for improved steering around bends, as well as for moving in a straight line over a long distance.



**Total lock**

Total lock for locking the wheel and swivel housing simultaneously for a secure standing.



**Fixed castor**

Wheel and housing are fix for standard functionality. The castor is continuously aligned in the direction of travel.



**Optional washable**

For washable castors please contact us.



**Ergonomic foot pedal**

Easily accessible operating pedal for manual directional lock available as alternative.

## Technical data and availability



Description	i		Housing type		
	Article description		4680	468S	4681
	Material		Very heavy pressed steel	Very heavy pressed steel	Very heavy pressed steel
	Swivel bearing		Two hardened ball races	Two hardened ball races	Two hardened ball races
Swivel interference	↻		Swivel castor		
	Wheel ø 125 mm		235 mm	235 mm	235 mm
	Wheel ø 160 mm		270 mm	270 mm	270 mm
	Wheel ø 200 mm		310 mm	310 mm	310 mm
Wheel ø 250 mm		360 mm	360 mm	360 mm	

Items with this sign "●" are available. Items with this sign "-" are not available in our standard range. Please contact us.





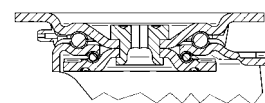
**Increased occupational safety**

The partially elastic foot protection helps to reduce accidents. Also used on uneven floors. It is available for all wheel diameters. Can be retrofitted. See page 19.



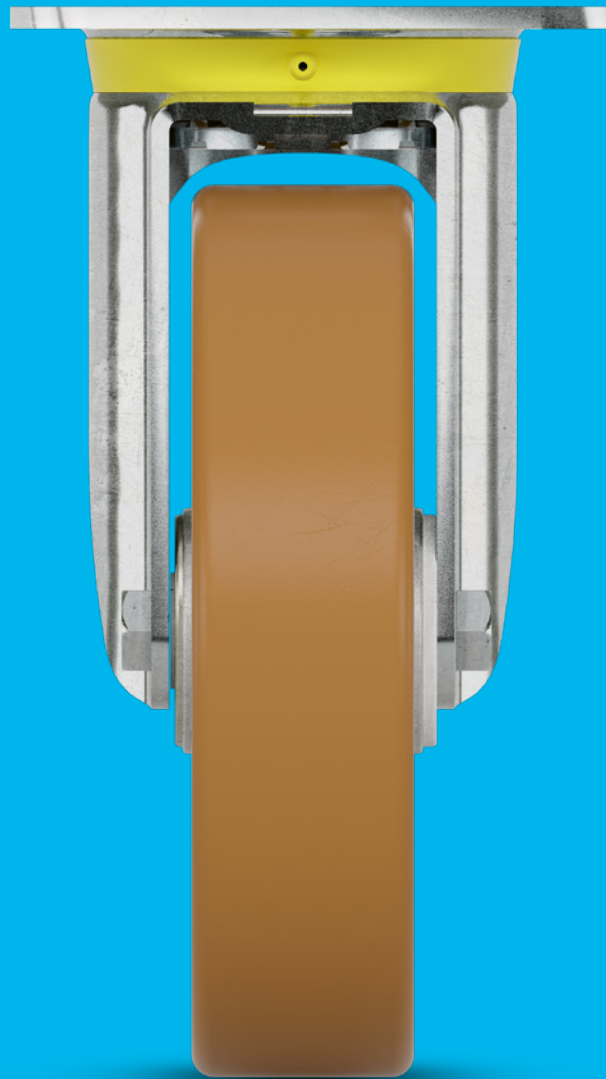
Swivel castor with total lock	Swivel castor with total lock and automatic directional stability 2 x 180°	Fixed castor
4687	468B	4688
Very heavy pressed steel	Very heavy pressed steel	Very heavy pressed steel
Two hardened ball races	Two hardened ball races	-
322 mm	322 mm	●
322 mm	322 mm	●
322 mm	322 mm	●
360 mm	360 mm	●

**Swivel bearing**



Double ball bearings, reinforced and heat-treated ball covers for high stability. Dust ring with integrated grease dispenser for easy maintenance.

# WHEELS

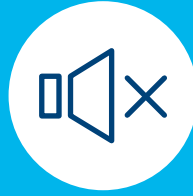


# FEATURES



## Low wear and tear wheels

Durable wheels with extremely low wear and tear.



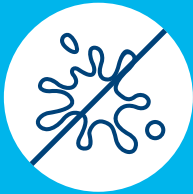
## Quiet rolling

Soft wheel versions for a quiet working environment.



## Reliable traction

Traction-optimised treads for secure grip on wet and slippery floors.



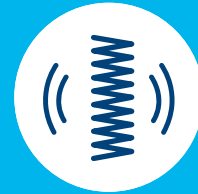
## Non-staining operation

Does not stain when in contact with floors over long periods of time.



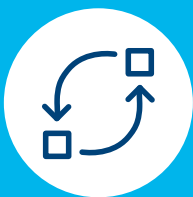
## Low-maintenance wheels

Thread guards allow for continuous use with minimal cleaning effort required.



## Low-vibration transport

Extra soft wheels with good shock-absorbing properties.



## Resource-conserving part replacement

Threaded axles allow effortless wheel change.



## Ergonomically friendly use

Wheels with optimised roll resistance to lighten the load for the user.



## Non-marking movement

Wheels with reduced abrasion and minimal cleaning effort.

# WHEELS

The characteristics of the wheel depend on the material and the bearing. Due to a very reduced abrasion our wheels are extremely wear-resistant and therefore durable. In addition, they are characterized by a very low need of cleaning and do not cause a stain when they are in contact with floors for a long period of time.



## **Elastech plus**

Vulcanised elastic rubber for high performance. In non-marking grey colour or black available.



## **Duratech**

Stable and robust, made of polyamide and thermosetting plastic.



## **Duratech precision**

Same characteristics as Duratech but with precision ball bearing for maximum manoeuvrability.

EXTRA STABLE



**Duratech load**

Made of extra strong polyamide and thermosetting plastic which is extra stable and indestructible.



**Novatech**

Highly resilient classics with cast polyurethane coating. Also available with convex tread.



**Novatech soft**

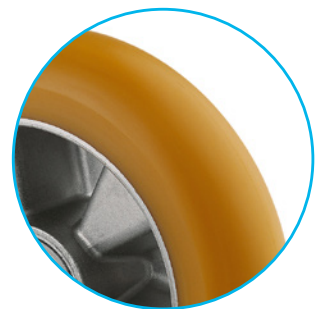
Same characteristics as Novatech but with a soft tread with damping properties to reduce noise.

PREMIUM QUALITY



**Ultratech**

Outstanding performance through premium polyurethane. Also available with convex tread.



**Highly customisable wheels**

Our casted polyurethane wheels are highly flexible to adapt them to your needs. The shore hardness of the tread and the shape can be customised. Convex treads for more manoeuvrability or flat for better traction.

## Technical data and availability

EXTRA  
STABLE

		Elastech plus	Duratech	Duratech precision	Duratech load
Description	Product name	IEP, IFP	UOO	UOP	TOO, TOP
	Article description	Vulcanised elastic rubber in grey (non-marking) or black	Polyamide	Polyamide	Polyamide, heavy duty
	Tread material	Shore A 67	Shore D 75	Shore D 75	Shore D 75
	Tread hardness	Aluminium	Polyamide	Polyamide	Polyamide
	Wheel body material	-20 °C / +85 °C	-40 °C / +80 °C	-40 °C / +80 °C	-40 °C / +80 °C
	Temperature range	50 mm	40 - 50 mm*	50 mm	50 mm
	Width of tread	Optional	-	-	-
	Antistatic	Optional	-	-	-
	Electric conductive (10 <sup>4</sup> OHM)	-	●	-	●
	Plain bearing	-	-	-	-
Bearing type	Roller bearing	-	-	-	-
	Cone ball bearing	-	-	-	-
	Precision ball bearing	●	-	●	●
Load capacity	Wheel Ø 125 mm	300 kg	-	-	700 kg
	Wheel Ø 160 mm	350 kg	500 kg	-	800 kg
	Wheel Ø 200 mm Width 46 mm	-	600 kg	-	-
	Wheel Ø 200 mm Width 50 mm	450 kg	800 kg	800 kg	800 kg
	Wheel Ø 250 mm	500 kg	800 kg	800 kg	-

Items with this sign "●" are available. Items with this sign "-" are not available in our standard range. Please contact us.

The mentioned load capacity is only valid for the Zeta product family. The load capacity of a single wheel without housing could be different.

\* Wheel diameter 160 mm has a width of tread in 40 mm. Wheel diameter 200 mm has a width of tread in 46 mm or 50 mm.

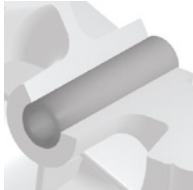
Wheel diameter 250 mm has a width of tread in 50 mm.

\*\* In wheel diameter 125 - 200 mm is the width of tread 50 mm and in wheel diameter 250 mm is the width of tread 55 mm.

**PREMIUM  
QUALITY**

Novatech	Novatech soft	Ultratech
ITP	ITP	ICP
Polyurethane, casted	Polyurethane, casted	Premium polyurethane, casted
Shore A 92	Shore A 80	Shore A 75 & 92
Aluminium	Aluminium	Aluminium
-20 °C / +60 °C	-20 °C / +60 °C	-20 °C / +60 °C
50 - 55 mm**	50 mm	50 mm
-	-	-
-	-	-
-	-	-
-	-	-
●	●	●
500 kg	400 kg	500 kg
800 kg	550 kg	800 kg
-	-	-
800 kg	700 kg	800 kg
800 kg	800 kg	800 kg

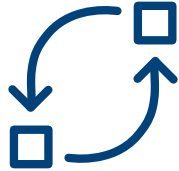
**Bearing types**



Plain bearing for short distances.



Precision ball bearing for highest performance.



**Resource-conserving part replacement**

Threaded axles allow effortless wheel change.



**Load capacity**

The load capacity depends on the housing and wheel. It has been tested and fulfills the requirements according to EN 12532 at a speed of 4 km/h and EN 12533 at a speed of 6 km/h. When using four castors, you can calculate the necessary load capacity as follows: The sum of the weight of your application plus the additional load divided by three castors.

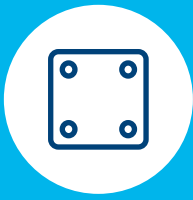
$$\frac{\text{Weight of application} + \text{load}}{3} = \text{Load capacity of one castor}$$

# FITTINGS





# FEATURES



## Solid mounting plate

Solid mounting plate with universal dimensions and holes for easy installation.

# ADDITIONAL FEATURES



## Permanent washability

All metal components made of stainless steel.



## Colour matching

Colours can be adapted to match the product design.



## Non-hazardous materials

Complies with the RoHS directive and REACH regulation of the European Union. Does not contain polycyclic aromatic hydrocarbons or chromium (VI).



## Certified quality

Tested in our own laboratory in compliance with European standards.

# PLATE FITTINGS

Secure connection with four screws.



## Technical data and availability



Description	Fitting type	Swivel plate	Fixed plate
	Article description	P63	P63
	Size of plate	137 x 105 mm	137 x 117 mm
	Plate hole centres	105 x 80 / 75 mm	105 x 80 / 75 mm
	Plate hole $\varnothing$	11 mm	11 mm
Overall height	Wheel $\varnothing$ 125 mm	164 mm	164 mm
	Wheel $\varnothing$ 160 mm	200 mm	200 mm
	Wheel $\varnothing$ 200 mm	240 mm	240 mm
	Wheel $\varnothing$ 250 mm	290 mm	290 mm

Items with this sign "-" are not available in our standard range. Please contact us.

# ACCESSORIES

We offer suitable accessories such as the partially elastic foot protection which prevents any contact between foot and wheel. This increases the safety of the employees and reduces accidents. Can be retrofitted if required.

## Flexible rubber

The flexible rubber aprons are shaped so they press in towards the wheel as soon as the wheel comes into contact with the foot. This prevents the castor from moving over and crushing the foot.



## Strong steel

Rigid guard rails made of steel attached to the side of the wheel. These ensure that the foot is guided safely around the side of the wheel.

## Versatile use

All floor conditions can be overcome without difficulty including uneven surfaces and obstacles.

## Technical data and availability



Description	Article description	Foot protection
	Temperature	-20 °C / +60 °C
	Width	151 mm
	Ground clearance	19 mm
	Hardness of rubber aprons	Shore A 75
Weight	Wheel Ø 125 mm	0,54 kg
	Wheel Ø 160 mm	0,67 kg
	Wheel Ø 200 mm	0,75 kg
	Wheel Ø 250 mm	1,256 kg
Length	Wheel Ø 125 mm	185 mm
	Wheel Ø 160 mm	220 mm
	Wheel Ø 200 mm	260 mm
	Wheel Ø 250 mm	310 mm



Mounted foot protection

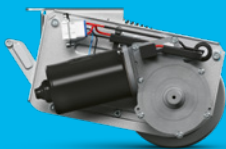
# DIVERSITY WITH A SYSTEM

## OUR CASTORS

All of our products have their own specific qualities and strengths. Whether it's high design standards, specialist applications or exceptional load capacities – our range can meet your needs and can be adapted to fit different models.

From the correct dimensions and technical specifications to the required configuration, our product families are able to offer the ideal solution – whatever you need. Contact us for more information or visit our website: [www.tente.com](http://www.tente.com)

E-Drive



⌀ 125 mm

Alpha



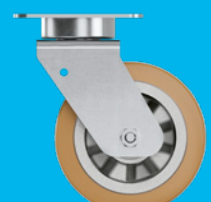
⊃ 70 - 500 kg  
⌀ 80 - 200 mm

Delta



⊃ 300 - 600 kg  
⌀ 125 - 200 mm

Delta twin



⊃ 600 - 750 kg  
⌀ 125 - 200 mm

Zeta



⊃ 300 - 800 kg  
⌀ 125 - 250 mm

Kappa



⊃ 300 - 2.000 kg  
⌀ 80 - 300 mm

Kappa flex



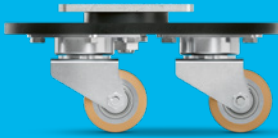
⊃ 360 - 750 kg  
⌀ 160 - 200 mm

Omikron



⊃ 900 - 11.000 kg  
⌀ 100 - 500 mm

Radiata



1.200 - 1.500 kg  
80 mm

Scout



150 - 350 kg  
160 - 200 mm

Integral



100 - 150 kg  
100 - 200 mm

Integral twin



125 - 250 kg  
100 - 150 mm

Linea clinic



150 - 200 kg  
125 - 150 mm

Aviana care



100 kg  
75 mm

Aviana



75 mm

Agila



40 - 100 kg  
50 - 150 mm

Agila twin



50 - 100 kg  
50 - 75 mm

Stora



60 - 160 kg  
75 - 160 mm

Mono



30 - 70 kg  
50 - 100 mm

Galea



60 - 100 kg  
100 - 125 mm

Levina



60 - 100 kg  
75 - 150 mm

Linea



40 - 150 kg  
50 - 150 mm

Anika



40 - 50 kg  
55 - 75 mm

Lumina



30 - 100 kg  
35 - 75 mm

Stylea



40 - 100 kg  
35 - 100 mm

Smiles



40 kg  
50 mm

Compacta



10 - 55 kg  
14 - 50 mm

# EXPERTISE THAT INSPIRES

## CONTACT US

We are a globally operating company supporting you on five continents. This means on-site support with service on a level playing field – along with in-depth knowledge. Additionally, our solution experts will advise you on the best mobility concept for your needs. Go here to find your nearest TENTE location: [www.tente.com/locations](http://www.tente.com/locations)

## INCREASE YOUR EFFICIENCY

Our intelligent mobility solutions help you save time, effort, energy, and operating expenses. This allows you to improve your operating methods and working conditions, thereby optimising your processes and ensuring higher productivity, profitability and safety. Ask for our solutions catalogue or read about how our customers benefit from our tailor-made solutions on our website: [www.tente.com/solutions](http://www.tente.com/solutions)

## SAVE DEVELOPMENT TIME

On our website you will find technical drawings, product data sheets and 2D and 3D CAD files in various formats: [www.tente.com/zeta](http://www.tente.com/zeta)

## GET MORE INFORMATION

In addition to our informative website, you can easily download various catalogues and brochures on mobility solutions, customer references, and much more: [www.tente.com/download](http://www.tente.com/download)



ER LIFE.

ET



[www.tente.com](http://www.tente.com)



PRODUCTIVITY



SAFETY



DESIGN



DURABILITY



ENVIRONMENT