

SOLUTIONS FOR MEDICAL DEVICES EFFICIENT, SAFE AND CUSTOMIZED



BETTER MOBILITY. BETTER LIFE.



CONTENT

OUR SOLUTIONS

- Ready for global challenges **3**
- Better health and productivity due to physical ergonomics **4**
- A healthy choice in all directions **6**
- Cognitive ergonomics for more safety and improved work processes **8**
- A clear plus in efficiency and ease of operation **9**
- Fast operation and maximum safety **10**
- Low-noise, lightweight and flexible **11**
- Designed entirely to suit your requirements **12**
- Groundbreaking safety from a standing stance **13**
- Solutions for safe transport and MRI areas **14**
- Durable design for the surrounding conditions in the medical environment **15**
- Services, far beyond boundaries **16**
- The right solution for every application **17**

OUR RANGE OF CASTERS

- Great design and driving comfort with Levina **18**
- Mastering everyday life comfortably with Levina care **19**
- Robust and ergonomic with Linea **20**
- Light and efficient with Linea light **21**
- Increased safety with Linea clinic **22**
- Safe stand with Linea load **23**
- Effortless operation with Linea e-lock **24**
- Efficient transport with E-Drive **25**

OUR SERVICES FOR YOU

- Full services with TENTE **26**
- Diversity with a system: our casters **28**
- Expertise that inspires **30**

READY FOR GLOBAL CHALLENGES

Regardless of whether your new product developments require maximum safety, ergonomics, efficiency and usability or your target market requires a cost-efficient product realization – talk to us. As a globally active company, we understand the global challenges in the medical field and will support you with trend-setting know-how, many years of experience and comprehensive service – right from the very beginning, from the first development phase of your project.

TENTE equips you to meet the challenges of the global medical market. For challenges that are becoming greater worldwide due to demographic change, rising life expectancies and the shortage of skilled workers. After all, we are at your side with precisely fitting products and with casters and wheels that help to ensure comprehensive healthcare.

READY FOR THE LATEST STANDARDS

We support you to upgrade your products to meet even the most demanding requirements. One example is the requirement according to the European Medical Devices Regulation. This regulation focuses on increasing the usability and intuitive safety of medical devices. Our solution: Products that take physical and cognitive ergonomics to a new level, so that you fully comply with the standards that have been mandatory since May 2021.

READY FOR YOUR REQUIREMENTS

We view every challenge from a particular angle-- from your perspective. Thus, the dialog and close cooperation with you is extremely important to us. We take a holistic approach in all phases of development – and consistently respond to your specific requirements. In this way, you can trust in the seamless integration of our cutting-edge mobility solutions into your systems, processes and design language. Moreover, they comply uncompromisingly with the functional requirements of your applications.

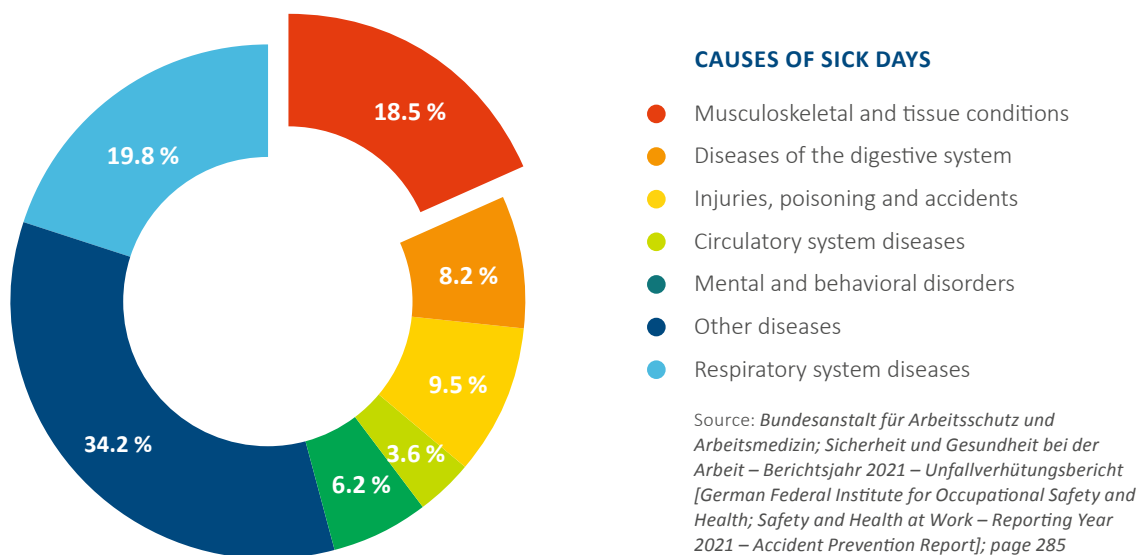
The following pages will show you our wide range of mobility solutions for medical devices. You can rest assured, whether you need casters and wheels for simple infusion stands or system solutions for your individual requirements – we understand the challenges and are ready for it.

BETTER HEALTH AND PRODUCTIVITY DUE TO PHYSICAL ERGONOMICS

Roughly a quarter of all sick days taken by nursing staff is the result of musculoskeletal disorders. After all, in the medical sector, in particular, heavy devices, stretchers and patients often have to be moved. Therefore, physical ergonomics is a key factor for manufacturers of medical devices.

To be more precise, the interaction between anatomy or physiology and physical activities in everyday work. Nursing staff can be relieved, preventive health care can be supported, and productivity in the medical work environment can be significantly boosted by focusing on easy movement, ergonomic design, and motorized equipment.

That is exactly why TENTE offers you a wide range of intelligent mobility solutions that focus on improving physical ergonomics – and, as a result, set new standards.





"We are committed to reducing the workload of medical professionals. In this way, TENTE offers mobility solutions that relieve staff and contribute to a significant reduction in sick leave."

Daniel Brandt, Medical Expert

A HEALTHY CHOICE IN ALL DIRECTIONS

THE SINGLE-WHEEL CASTER

We recommend our Levina, Integral, Galea, Agila and Mono single-wheel casters for medical devices with less weight and for applications requiring primarily straight travel. This is because single-wheel casters offer almost the same level of straight travel as twin-wheel casters. Thus, they meet ergonomic requirements and allow you to achieve cost advantages.

THE TWIN-WHEEL CASTER

When it comes to increasing physical ergonomics of medical devices, twin-wheel casters stand out with a decisive advantage: a significantly reduced physical effort compared to single-wheel casters. This is due to the low swivel resistance resulting from the differential effect of the two wheels. This makes it easier for the nursing staff to maneuver and move heavy equipment with ease. The heavier the weight of the equipment under which the twin-wheel casters are mounted, the more this advantage is realized.

HOW IMPORTANT IS THE SWIVEL RESISTANCE FOR YOUR MOBILITY?

In hospitals, care facilities and hospital, particularly, medical devices must be moved repeatedly from A to B. In order to reduce the workload of staff, mobility solutions have to offer a starting and swivel resistance, which is as low as possible.

The amount of force needed to get the medical equipment moving from a standstill is referred to as the starting resistance. The swivel resistance, on the other hand, is the force that must be applied to keep the medical device in motion and to maneuver it. The swivel resistance depends on various factors. Starting with the tread and the hardness of the tread up to the offset. However, the following principle applies: hard casters are used on soft floors and soft casters are used on hard floors.

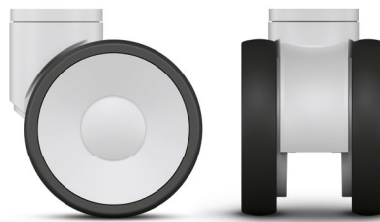
Single-wheel caster Levina:



You can find
the product
brochure
here:



Twin-wheel caster Linea:



You can find
the product
brochure
here:



The type of swivel bearing, the diameter of the ball race, and the weight of the medical device that the casters have to support, are other variables that affect the swivel resistance.

To be able to achieve optimal maneuverability in hospitals and care facilities, it is also important to consider the amount, type and arrangement of the casters. Fixed casters, for example, ensure very good directional stability even in long hallways. Moreover, if the medical device is equipped with swivel and fixed casters, it can also be rotated effortlessly and maneuvered in all directions. It also offers caregivers improved directional stability when navigating curves.



THE ALL-ROUNDER: OUR LINEA PRODUCT FAMILY

Our Linea product family brings variety into motion – literally. The twin-wheel caster is available in a wide range of designs and is thus available for almost all requirements in the medical environment. Whether it is about reducing the effort required by staff, simplifying maneuvering or increasing safety – the Linea product family offers you a suitable solution. The result is increased physical ergonomics, physical relief for caregivers, more productivity and improved health in terms of musculoskeletal disorders.

MORE RELIEF WITH OUR MOTORIZED CASTER E-DRIVE

In addition to selecting the appropriate casters, our TENTE E-Drive motorized technology is another intelligent solution to significantly improve physical ergonomics. The mobility solution offers perfect directional guiding, accurate tracking, and comfortable starting support. Even equipment weighing several hundred pounds can be easily moved and maneuvered by caregivers. In combination with the electric locking system e-lock, this ergonomic effect is even further enhanced. Your added value: more relief, more efficiency and more time savings.

COGNITIVE ERGONOMICS FOR MORE SAFETY AND IMPROVED WORK PROCESSES

PERFECT INTERACTION

In the medical environment, it is essential to have excellent teamwork – and this also applies to the interaction between people and applications: devices that are quick, easy and comfortable to handle improve the quality of care, increase safety and promote patient recovery. Additionally, intuitive operation reduces the workload for knowledgeable staff and ensures effective workflows. Therefore, one aspect of the production of medical devices is indispensable: the consideration of processes in the interaction with medical devices – cognitive ergonomics. Cognitive ergonomics is also a key factor in TENTE's product development.

When it comes to cognitive ergonomics, the position of the control units is particularly important. The right position guarantees easy access and operation. Central locking casters are actuated remotely with just one kick pedal or by hand control, as a result, achieving reduced risk and time saving as well.

Cognitive ergonomics and the highest level of safety are combined in TENTE mobility solutions with safety function. When the handle is operated by hand, foot or with the help of an electric button, the wheels are released and can be moved as long as the control element is actively used. As soon as the user releases it, the wheels automatically lock. This way, the system prevents unintentional movement and incorrect operation. At the same time, it is self-explanatory and easy to use.

PERFECT INTEGRATION

Digitally controllable mobility solutions, like our Linea e-lock, emphasize simple, intuitive handling just as much. They can be integrated into the individual work process in a highly flexible way. Its freely programmable control function can be integrated into existing control panels. Another advantage is the possibility to work without a gear lever rod. The mobility solution not only opens up unlimited design possibilities, but also saves you time during construction, assembly and subsequent maintenance.



Linea e-lock



You can find the product brochure here:



"Thanks to the innovative solutions from TENTE, we were able to significantly improve user-friendliness."

Anne Becker, Global Marketing Manager at Siemens Healthineers

Read more about the customer reference
www.tente.com/siemens

A CLEAR PLUS IN EFFICIENCY AND EASE OF OPERATION

The demands on medical staff are constantly increasing. An aging society, increasing demand for health services and the shortage of skilled workers also place special demands on mobility solutions.

COMFORTABLE OPERATION AND EASY MANEUVERABILITY ARE ESSENTIAL

Casters and wheels must contribute to greater efficiency in daily work and improve productivity. We are at your side to meet this challenge and offer you the right products.

FAST ASSEMBLY AND EASY CLEANING

Our mobility solutions are easy to clean and, depending on the version, are even washable. Versions with plug-in fittings are quick and easy to assemble, and thus save time and money. In addition, our casters and wheels are available with optional tread protection. The clear advantage: if you, as the manufacturer, move the medical device in-house during assembly, there is no need for manual covering or final cleaning of the casters.



Do you have any questions?

If so, simply use our contact form and get in touch with us:

www.tente.com/contact

FAST OPERATION AND MAXIMUM SAFETY

TENTE's central locking systems enable nursing staff to lock and release all casters with just one step. The operating element of the kick pedal is accessible from every side and ensures ergonomic operation. The result: improved safety and significant time saving. With our many years of experience, we know how to achieve the perfect interaction between casters and locking system. For example, our R36-34 fitting ensures easy mounting of the casters.



Time-saving installation

The quick-fitting assembly system allows for a quick installation and replacement of the casters. This increases the efficiency of the work process and productivity while reducing the need for maintenance.

Highest operating comfort

The ergonomic kick pedal is simple to use from either side with just one push, making it quick and effortless to lock and release the casters in any position.

CENTRAL LOCKING

SUITABLE FOR THE FOLLOWING PRODUCT FAMILIES:



Integral

📦 100 - 150 kg
⌀ 125 - 200 mm



Integral twin

📦 125 - 250 kg
⌀ 100 - 150 mm



Linea

📦 150 - 200 kg
⌀ 125 - 150 mm

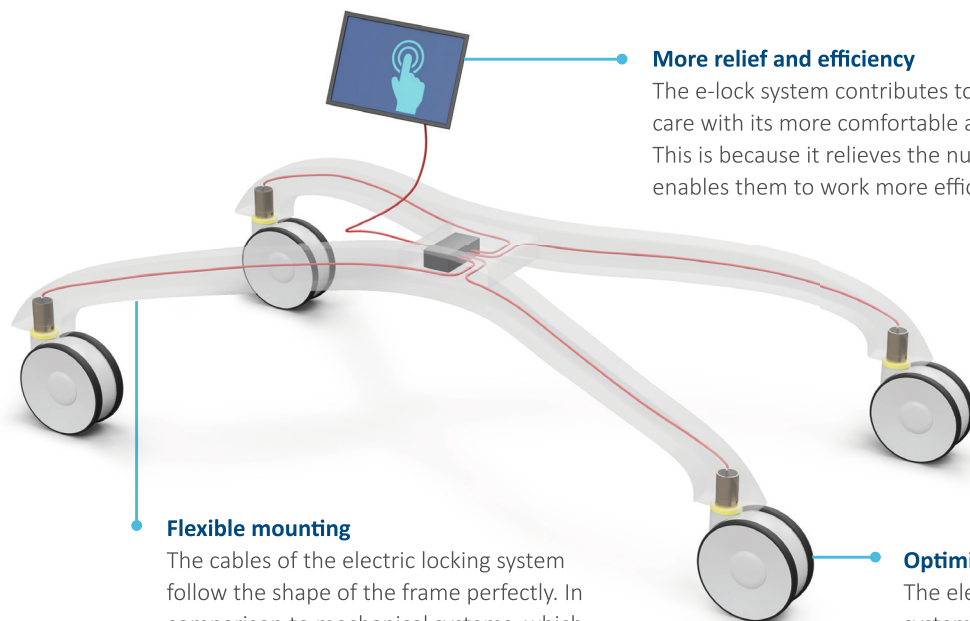


Levina care

📦 100 kg
⌀ 100 - 125 mm

LOW-NOISE, LIGHTWEIGHT AND FLEXIBLE

The locking system e-lock offers a locking function that can be activated electrically. The clear advantage: shifting torques and forces are eliminated. Therefore, the actuation is almost silent and all actuation positions can be flexibly controlled. The system also offers a high degree of flexibility in terms of individual design and can be seamlessly integrated into the corporate design of the hospital bed manufacturer. The automatic locking function also reduces the risk of improper use – and thus increases safety.



More relief and efficiency

The e-lock system contributes to improved patient care with its more comfortable and safe operation. This is because it relieves the nursing staff and enables them to work more efficiently.

Flexible mounting

The cables of the electric locking system follow the shape of the frame perfectly. In comparison to mechanical systems, which feature actuating linkages, as a result, hospital bed manufacturers benefit from much more design freedom.

Optimized safety

The electronic central locking system, in combination with a motion sensor, enables the casters to be locked automatically at a set time. This provides more safety for the operator and the patient.

CENTRAL LOCKING

SUITABLE FOR THE FOLLOWING PRODUCT FAMILIES:



Linea e-lock

150 kg
150 mm



Do you have any questions?

If so, simply use our contact form and get in touch with us:

www.tente.com/en-gb/news/unlock-the-power-of-safety

DESIGNED ENTIRELY TO SUIT YOUR REQUIREMENTS

Our mobility solutions fit seamlessly into your design language. At the same time, they meet your functional and formal requirements.

They can be customized in a variety of ways – from adapting to your corporate design to branding with your logo and name. In this way, we are able to provide entire product ranges – and support you in enhancing the awareness and identification value of your brand.

At the same time, our product families offer fitting features for every need and application. For example, our Linea and Levina product families are available in different sizes and can be supplied with various interfaces, functions, device connections and load capacities.

CUSTOMIZED CO-DEVELOPMENTS

We would be happy to develop individual mobility solutions in collaboration with you. These solutions are designed entirely according to your requirements.

EASY ORIENTATION AND IMPROVED WORK-FLOWS

The printable wheel caps of our Linea product family are ideal for providing orientation through color coding. In this way, medical devices can be individually divided into sections, assigned to specific functions. They can also be labeled to match the corresponding hospital area. The result: improved work processes and more safety. This is because the color-coded system prevents serious confusion and contributes to avoiding risks.

CUSTOMISED CASTER DESIGN:



Surface coatings

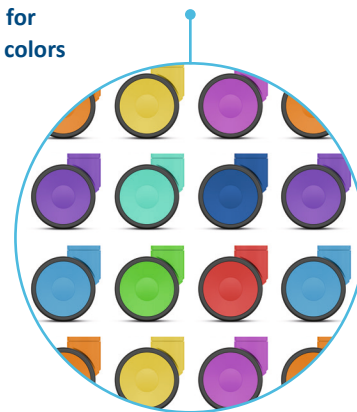


Individual branding



Fascinating picture prints

Examples for matching colors





GROUNDBREAKING SAFETY FROM A STANDING STANCE

Our certified mobility solutions meet the highest safety standards. Due to their cutting-edge features, they help to prevent accidents, improve occupational safety and protect medical devices.

SAFE STAND

In addition for safe movement, some applications also require a safe stand and extreme torsional strength. We have special solutions for them as the first choice for operating tables, transporters, microscopes and surgical robots.

ELECTRIC CONDUCTIVITY

Almost all our products for medical technology are available in an electrically conductive version. Tested conductivity ensures discharge capability, prevents electrostatic charging and protects the medical device, the user and the patient. We offer you solutions that divert residual currents into the ground and do not generate electrostatic charges due to friction while moving. These casters meet the strict stan-

dards of IEC 60601 and EN 12527 and are fully tested for their electrical conductivity in our own testing laboratories.

INTEGRATED CABLE GUARD

Our casters and wheels are also available with cable catchers. This provides valuable protection for patients and staff. After all, if cables are run over, it can damage the wiring. This defect may in turn lead to an electric shock. Cable catchers prevent cables lying around from being run over, avoid damage to the wiring and thus counteract the danger of electric shocks.





SOLUTIONS FOR SAFE TRANSPORT AND MRI AREAS

SAFE TRANSPORT

Our solutions enable low-vibration transport and perfect maneuverability even in confined spaces.

Heavy and sensitive medical devices often have to overcome obstacles and uneven surfaces. We provide mobility solutions with the correct wheel diameter to deal with this challenge. They meet the ISO-60601 standard and improve both driving comfort and safety.

INTELLIGENT SOLUTIONS FOR THE MRI AREA

MRI areas are subject to specific safety requirements. We support you with products that meet these specific requirements and safely mobilize your medical equipment. Our Levina and Linea stainless steel casters are suitable for MRI-safe equipment. These synthetic casters feature stainless steel parts that contain only a low residual magnetism. These are suitable in cases where the 5 Gauss line is not exceeded.

Linea safety with automatic locking function, on the other hand, prevents unintentional movement of medical devices for the MRI area. Moreover, the intelligent solution consists of our electronic locking system Linea e-lock scan and the electric drive E-Drive scan. This makes it easier for the nursing staff to attach the stretchers to the diagnostic equipment. It also guarantees a safe stand and improves the prevention of falls.

DURABLE DESIGN FOR THE SURROUNDING CONDITIONS IN THE MEDICAL ENVIRONMENT

In hospitals, care facilities and medical practices, equipment is exposed to a wide variety of environmental influences and must therefore feature specific properties: durability, washability, corrosion and temperature resistance, chemical resistance, high load capacity. In addition, the casters should also be shock-absorbent. As one of the leading manufacturers of mobility solutions within the medical sector, we guarantee these essential properties and always add other crucial factors: many years of experience, lab-tested quality and expert support on five continents. No matter your circumstances, TENTE is the right choice for you.

WASHABLE AND CORROSION RESISTANT

Due to hygiene standards in the clinical environment, medical equipment must be washable. Our casters and wheels meet the strictest requirements, are easy to clean and impress with their corrosion resistance. To be able to provide you with the optimal mobility solution, we not only look at your applications holistically, but also individually – and support you when it comes to finding the correct materials. For example, we can assist you with zinc-plated products or solutions made of stainless steel. We test the corrosion resistance of the materials using the salt spray test according to ISO 9227.

CHEMICAL RESISTANCE

Medical devices often come into contact with different cleaning agents and disinfectants. We will be happy to advise you on choosing the correct materials with the required chemical resistances.

SHOCK RESISTANCE AND HIGH LOAD CAPACITY

Many devices used in the medical sector are heavy or have to carry heavy loads. On top of that, their technology is often highly sensitive and therefore requires reliable protection, especially when the equipment is moved. For heavy loads, we offer durable constructions with outstanding load capacity. Our shock resistant mobility solutions also offer exceptional resistance to vibrations, outstanding dampening properties, shock absorption and noise reduction.



“Our two family-owned companies have been working together closely for almost 50 years now. That speaks for itself.”

Georgios Kampisiulis Kemmler, Managing Director,
and Anja Kemmler, Shareholder of the Stieglmeyer Group

Read more about the customer reference:

www.tente.com/stieglmeyer

SERVICES, FAR BEYOND BOUNDARIES

KEEPING A GLANCE ON THE GLOBAL ENVIRONMENTAL IMPACTS

Manufacturers who sell their products worldwide face the challenge of considering the different climatic conditions of their markets. This ranges from humidity to ambient temperatures. We are a globally active company on five continents and therefore know and understand country-specific circumstances. In close consultation with you, we will find the exact solution for your individual local requirements.

SOLUTIONS FOR THE TRANSPORT OF YOUR EQUIPMENT

Transportation also plays a significant role in the value chain for manufacturers of medical equipment. The sensitive products have to be shipped and loaded in a protected manner without damaging the surrounding. In many hospitals, forklifts and pallet trucks are not allowed to be used in order to avoid damage to the floor.

In addition, expensive medical equipment is often shared among several facilities and thus also re-packed and transported in regular intervals. As

an experienced manufacturer of industrial and heavy-duty casters, we offer you targeted mobility solutions for your factory traffic and transportation of goods. Safely from A to B – from the beginning to the end.

LAB-TESTED QUALITY

There is one company that we place very special demands on: TENTE. In order to be able to guarantee you consistent high quality for your product series at all times, TENTE has modern test laboratories. Here, our developments are tested to the limit.

We would also be happy to carry out customer-specific tests for you and support you. For example, we can help you to achieve TÜV [German inspection authority for vehicles and equipment] and FDA approval for your devices or to fulfill the approval requirement according to EN 60601.

“When it comes to our quality testing, we are quite particular to meet the highest standards. We do not only comply with the various national and international standards – but of course also with the our customers’ specifications.”

Friedrich Hüchelbach, Global Quality Manager



THE RIGHT SOLUTION FOR EVERY APPLICATION

We take on every challenge – while considering your individual perspective. Whether it is to improve safety, increase productivity or ensure maximum durability. No matter whether the greatest possible comfort, improved ergonomics or minimal noise are required – we are guaranteed to offer you the right mobility solution. This is why we invite you to put us up for a challenge and get more information!

The following pages will provide you with a comprehensive overview of the key features and benefits of our products. If you are looking for an individual mobility solution tailored to your specific application, we will definitely be there for you. On pages 26 and 27 you can learn how we design, develop and implement such a solution – together with you.



**Do you have
any questions?**

If so, simply use
our contact form
and get in touch
with us:

**[www.tente.com/
contact](http://www.tente.com/contact)**

GREAT DESIGN AND DRIVING COMFORT WITH LEVINA

 **60 - 100 kg**  **103 - 194 mm**  **75 - 150 mm**

Our Levina product family is ideal for the medical environment. This means you can rely on tested conductivity that protects both nursing staff and medical equipment from electrostatic discharge. Spring-loaded solid plug fittings ensure shock-free transportation of sensitive medical equipment. Particularly soft wheel variants ensure low noise development and thus help to keep patients comfortable. In addition, you can also get metal-free versions, which are ideal for use in magnetic resonance imaging (MRI).

Low-vibration and low-noise transport

Synthetic housing (shock-absorbing) and soft wheels with good shock absorbing properties ensure a quiet working environment.

Design options

Individual design of color and surface to match the product design.

Chemical-resistant components

Resistant to many cleaning agents. Less maintenance costs due to durability.



↓
You can find the product brochure here:



MASTERING EVERYDAY LIFE COMFORTABLY WITH LEVINA CARE

 **100 kg**  **137 - 161 mm**  **100 - 125 mm**

In the medical environment it is said: there's power in silence. The new patented central locking solution allows caregivers to quietly and easily lock all casters with a single step, reducing the amount of workload. At the same time, it improves safety by preventing unintentional movement when the patient is standing up or lying down. This promotes the patient's rest and in this way, it supports the healing process. Sounds interesting? Then contact us – we will be happy to answer any questions you might have.



Quiet and ergonomic actuation


The smooth actuation simplifies the handling for the staff and provides not only physical relief, but also more safety. The low noise during actuation contributes to an undisturbed recovery of patients.

Design options

Individual design of color and surface to match the product design.

Examples of
color options:




You can find
the product
brochure
here:



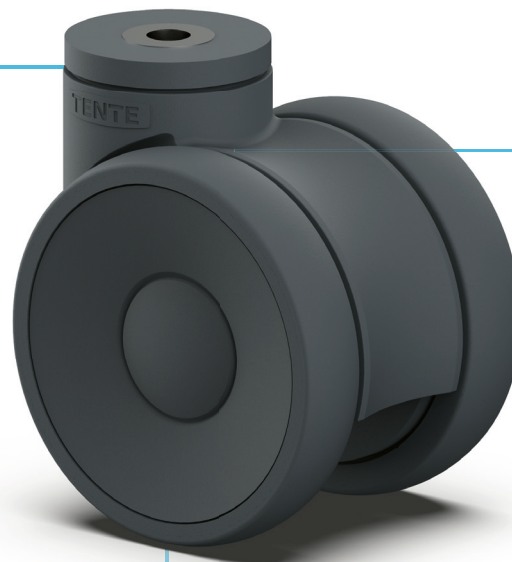
ROBUST AND ERGONOMIC WITH LINEA

 **90 - 150 kg**  **78 - 170 mm**  **75 - 150 mm**

It does not come as a surprise that this caster has been the first choice on the market for years and is used millions of times. The Linea sets the standard for double-wheel casters in the medical sector by combining an elegant design with maximum safety, durability and exceptional resistance to shock loads. It is particularly easy to clean.

Ergonomic design

In contrast to one wheel, our Linea has extremely low pivoting resistance due to the differential action of its two wheels for easy maneuverability with little physical effort.



Robust and maintenance-free construction

The enclosed design and wheels with sealed bearings provide protection against splashing water and dirt. Its chemical-resistant components make the Linea impervious to many cleaning agents and chemical substances, while its load-bearing housing ensures a stable construction.

High diversity of variants

The Linea product family offers a variety of designs for the highest demands in the hospital environment. These include models that allow color matching to the product design, permanently washable versions, casters with different fixings and conductive versions to protect users and electrical equipment from electrostatic discharge.

↓
You can find the product brochure here:



LIGHT AND EFFICIENT WITH LINEA LIGHT

 **40 - 100 kg**  **50 - 109,5 mm**  **50 - 100 mm**

Regardless of whether your new product developments require maximum safety, ergonomics, efficiency and usability or your target market requires a cost-efficient product realization: As a globally active company, we understand the global challenges in the medical field and will support you with trend-setting know-how, many years of experience and comprehensive service – right from the very beginning, from the first development phase of your project.

Customizable construction

We view every challenge from a particular angle from your perspective. Accordingly, the Linea light offers the possibility of a cost-efficient product realization.





Variable fixings

To ensure a perfect connection between caster and application, the mobility solutions offer a wide range of mounting options.

Low maintenance casters

The Linea light caster has a resistant housing and features protective seals against splash water, dirt and cleaning agents.

Available in the standard colors:

-  RAL 9002
-  RAL 7001
-  RAL 7015
-  RAL 9011

Award-winning design

The Linea light is convincing not only because of its clear design, which has won international awards, but also because of its versatility. It is not only available in the standard colors, but also in special colors on request, depending on the customer's wishes.



You can find the product brochure here:



INCREASED SAFETY WITH LINEA CLINIC

 **150 kg**  **130 - 175 mm**  **125 - 150 mm**

Our Linea clinic has a remarkably low overall height, which allows to reduce the height of the application to a minimum. With its low swivel resistance and ergonomic operation, the Linea clinic also takes the burden off healthcare staff, providing them with optimal maneuverability and easy operation.

Quiet and ergonomic actuation

The smooth actuation simplifies the handling for the staff and provides not only physical relief, but also more safety. The low noise during actuation contributes to an undisturbed recovery of patients.

Lowest installation height

The XS fitting of Linea is barely higher than the wheel size. With a diameter of 125 millimeters, the overall height of the caster amounts to just 130 millimeters. The clear advantage for hospital bed manufacturers: hexagonal bars can be mounted particularly low.

Low overall height

Our mobility solution features a particularly low overall height, ensuring that medical staff can reduce the height of the application to a minimum.



↓
You can find
the product
brochure
here:



SAFE STAND WITH LINEA LOAD

 **200 kg**  **155 mm**  **150 mm**

With this mobility solution you get the full load of safety. Or more precisely--high load capacity and durability. Increased torsional stiffness for a firm stand of operating tables. Tested electrical conductivity. Low overall height for reduced risks of injury to patients. And, of course, mobility that is unique in terms of both ergonomics and safety.

Low overall height

When used under operating tables, the Linea reduces the risk of accidents due to its low overall height. The bed surface can be positioned particularly low, allowing patients and caregivers to benefit from a clear increase in safety.




Increased torsional stiffness

In operating rooms, operating tables have to meet particularly strict requirements. Linea load offers outstanding torsional stiffness for this very reason and thus ensures that operating tables stand firmly.

High load capacity

With its higher load capacity of 200 kilograms, the castor is extremely robust and offers the highest level of safety for caregivers and patients.


You can find
the product
brochure
here:



EFFORTLESS OPERATION WITH LINEA E-LOCK

 **150 kg**  **155 mm**  **150 mm**

Our TENTE Linea e-lock is characterized by directional or total locks that can be activated electronically. This not only enables individual control of the casters, but above all effortless operation. Unlocking is done effortlessly and conveniently using a push-button, so that the medical staff is sustainably relieved. But that's not all, the system also works very quietly, which also helps patients to rest and recover.

High safety

Manufacturers have the possibility to add a motion sensor to the Linea e-lock. The result: a timed automatic locking of the casters and more safety for patients and staff.

Easy and flexible integration

The user-programmable control function can also be integrated into existing control units. By eliminating the actuating rods and kick pedals, new possibilities open up regarding the design of devices.

Quiet work environment

Quiet unlocking ensures a comfortable work environment for both the patient and the clinician.



You can find the product brochure here:



EFFICIENT TRANSPORT WITH E-DRIVE

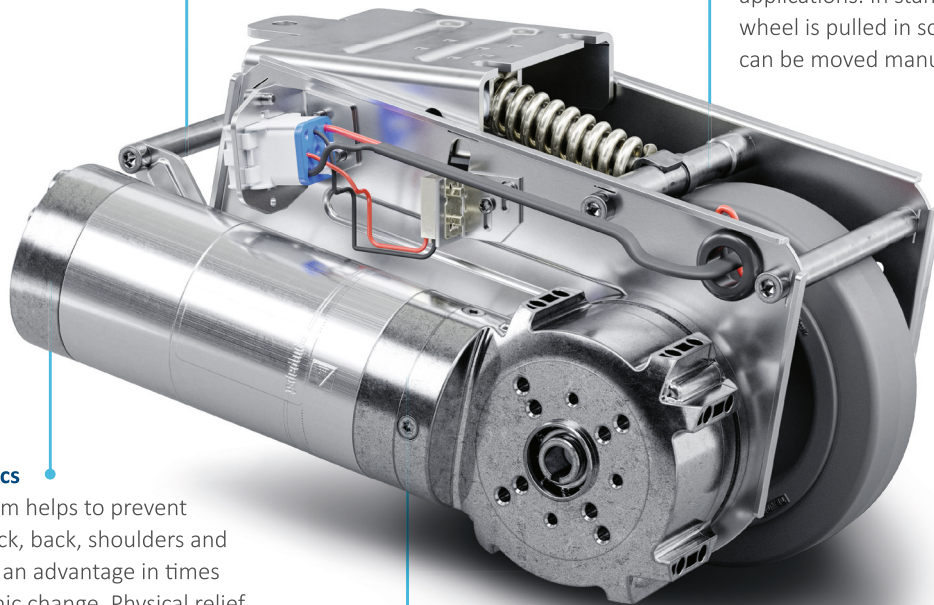
When heavy medical devices need to be moved safely and gently, our motorized caster E-Drive opens up completely new possibilities. It supports the medical staff in starting up and maneuvering, thus facilitating their work and increasing productivity. The clear advantages-improved work processes, increased quality of care, increased employee satisfaction and reduced sick leave.

Increased productivity

E-Drive helps to improve the efficiency of workflows resulting in cost savings.

Great flexibility

Depending on the customer's needs, the E-Drive can be individually configured. The system can be easily integrated into existing applications. In stand-by mode, the driving wheel is pulled in so that the application can be moved manually.



Improved ergonomics

The ergonomic system helps to prevent discomfort in the neck, back, shoulders and hands of the users – an advantage in times of strong demographic change. Physical relief equals less sick leave. The result is a quick return on investment for E-Drive.

Convenient system solution

The system is easy to integrate and consists of a drive unit, control unit, hand control, battery, battery charger and mounting kit.

↓
You can find the product brochure here:



FULL SERVICES WITH TENTE

1

CONSULTATION

What challenges do you face? What would you like to improve? Safety at work? Efficiency? Productivity? Or all of the above? Our experts listen carefully and set the initial goals together with you.



2

ANALYSIS

By involving the necessary specialists, we get a precise picture of your current situation. Our experts look at all the decisive influencing factors and focus on your individual needs – starting with the requirements in terms of product specifications, through to system integration and delivery times. The entire analysis is carried out in a particular manner: wholly holistically.



3

PRESENTATION OF THE IDEA

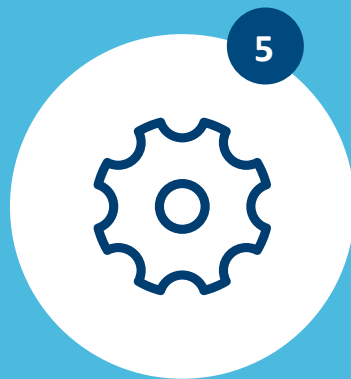
We develop a concept idea for a mobility solution that is tailored precisely to your requirements. We will then provide you with a detailed presentation and discuss the next steps.





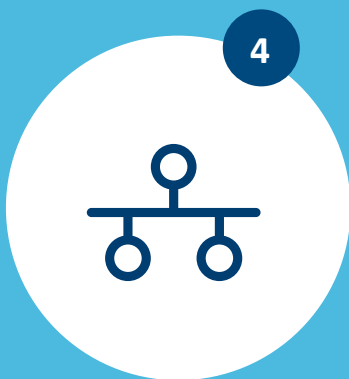
FINISHED SOLUTION

We deliver the finished mobility solution and are definitely happy to provide you with comprehensive support afterwards, for example, with our all-round, worry-free service package. Contact us and we will advise you individually.



SAMPLE/PROTOTYPE

You will receive an initial prototype or a certain number of sample casters from us. You can test these extensively in connection with your application before we then finalize the development together.



COLLABORATIVE DEVELOPMENT

The idea becomes a reality: We implement the planned project in close coordination with you. In the process, we use our entire development expertise – and implement the joint concept.

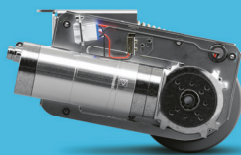
DIVERSITY WITH A SYSTEM: OUR CASTERS

All of our products have their own specific qualities and strengths. Whether it's high design standards, specialist applications or exceptional load capacities – our range can meet your needs and can be adapted to fit different models.

From the correct dimensions and technical specifications to the required configuration, our product families are able to offer the ideal solution – whatever you need.

Contact us for more information or visit our website:
www.tente.com

E-Drive



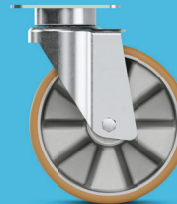
600 - 800 kg
125 mm

Alpha



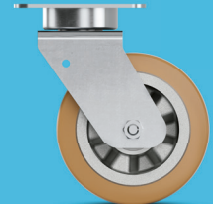
70 - 500 kg
80 - 200 mm

Delta



300 - 600 kg
125 - 200 mm

Delta twin



600 - 750 kg
125 - 200 mm

Zeta



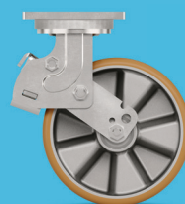
300 - 800 kg
125 - 250 mm

Kappa



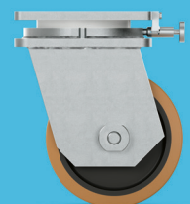
300 - 3.000 kg
80 - 300 mm

Kappa flex



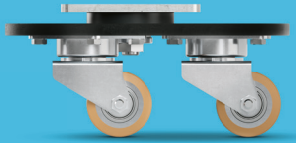
360 - 750 kg
160 - 200 mm

Omikron



900 - 22.500 kg
100 - 600 mm

Radiata



1.200 - 1.500 kg
80 mm

Scout



150 - 350 kg
160 - 200 mm

Integral



100 - 150 kg
100 - 200 mm

Integral twin



125 - 250 kg
100 - 150 mm

Linea clinic



150 - 200 kg
125 - 150 mm

Forma



125 - 150 kg
125 - 150 mm

Aviana care



100 kg
75 mm

Aviana



100 kg
75 mm

Agila



40 - 100 kg
50 - 150 mm

Agila twin



50 - 100 kg
50 - 75 mm

Stora



60 - 160 kg
75 - 160 mm

Mono



30 - 70 kg
50 - 100 mm

Galea



60 - 100 kg
100 - 125 mm

Levina



60 - 100 kg
75 - 150 mm

Linea



40 - 150 kg
50 - 150 mm

Anika



40 - 50 kg
55 - 75 mm

Lumina



10 - 100 kg
35 - 75 mm

Stylea



40 - 100 kg
35 - 100 mm

Smiles



40 kg
50 mm

Compacta



10 - 55 kg
14 - 50 mm

EXPERTISE THAT INSPIRES

CONTACT US

We are a globally operating company supporting you on five continents.

This means on-site support with service on a level playing field – along with in-depth knowledge. Additionally, our solution experts will advise you on the best mobility concept for your needs. Follow this link to find your nearest TENTE location:

www.tente.com/locations

INCREASE YOUR EFFICIENCY

Our intelligent mobility solutions help you save time, effort, energy, and operating expenses. This allows you to improve your operating methods and working conditions, thereby optimising your processes and ensuring higher productivity and profitability, and improved safety. Ask for our solutions catalog or read about how our customers benefit from our tailor-made solutions on our website:

www.tente.com/solutions

SAVE DEVELOPMENT TIME

On our website you will find technical drawings, product data sheets and 2D and 3D CAD files in various formats:

www.tente.com/products

GET MORE INFORMATION

In addition to our informative website, you can easily download various catalogs and brochures on mobility solutions, customer references, and much more:

www.tente.com/download



ER LIFE.

ET



www.tente.com



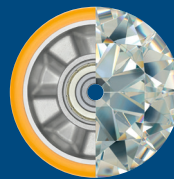
PRODUCTIVITY



SAFETY



DESIGN



DURABILITY



ENVIRONMENT