

PRODUCT INFORMATION

AGILA TWIN

 50 - 100 kg

 69 - 103 mm

 50 - 75 mm



TENTE

BETTER MOBILITY. BETTER LIFE.

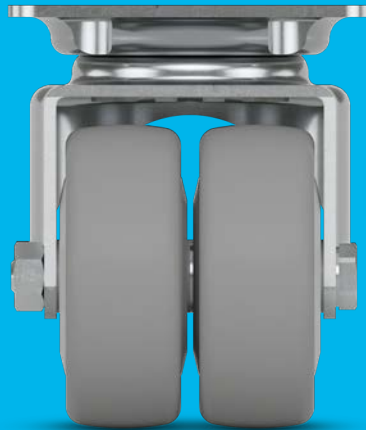
HOUSINGS

PAGES: 4-7



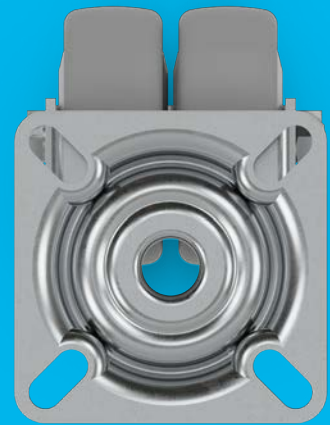
WHEELS

PAGES: 8-13



FITTINGS

PAGES: 14-17



BETTER MOBILITY IN PREMIUM QUALITY

TENTE believes in smart mobility solutions which noticeably improve people's lives and their work environment. TENTE solutions increase productivity, ensure safety and open up new horizons in matters of design and durability as well as environmental friendliness. Leading manufacturers and companies of different industries rely on these competencies and our high production quality.

On the following pages you will find technical information of our Agila twin product family. We will also demonstrate the added value this mobility solution offers to your organisation. Among others:

Optimised manoeuvrability

Twin wheel castor with high manoeuvrability due to differential effect.

User-friendly central lock

Simultaneous locking of more than one castor using a central actuation lever.

Robust housing

Twin wheel castors for high load capacity and low height.

HOUSINGS



FEATURES



Robust housing

Twin wheel castors for high load capacity and low height.



User-friendly central lock

Simultaneous locking of more than one castor using a central actuation lever.



Optimised manoeuvrability

Twin wheel castor with high manoeuvrability due to differential effect.



Secured stand

Total lock for swivel housing and locking the wheel simultaneously.



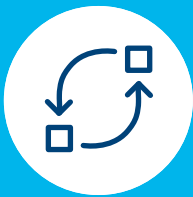
Painted surface

Black housing with bump and scratch resistant cathode immersion paint.



Compliant version

For use in commercial kitchens (DIN 18867 Part 8).



Resource-conserving part replacement

Threaded axles allow for effortless wheel change.

HOUSINGS

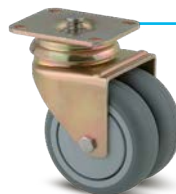
The housings are made of pressed steel, which is bright zinc plated and blue passivated. The wheel axle with nut makes it possible for an easy exchange of the wheel, resulting in reduced maintenance costs. The twin wheel castors have an increased manoeuvrability due to differential effect.



• **Swivel castor**
Swivel housing for easy manoeuvrability in all directions.



• **Wheel brake**
Wheel lock with foot pedal for manual operation that prevents unintended movement.





• **Central wheel brake**
User friendly central lock for simultaneous locking of more than one castor using a central actuation lever. The wheel brake simultaneously locks both wheels for a secure standing.



• **Total lock**
The total lock simultaneously locks the wheel and swivel housing for a secure standing.

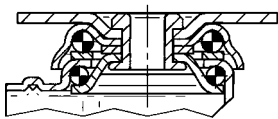
Technical data and availability



 Description	Housing type	Swivel castor	Swivel castor with wheel brake	Swivel castor with central wheel brake	Swivel castor with total lock
	Article description	2970	2975	2976	2977
	Material	Pressed steel	Pressed steel	Pressed steel	Pressed steel
	Swivel bearing	Double ball bearing swivel head	Double ball bearing swivel head	Double ball bearing swivel head	Double ball bearing swivel head
 Swivel interference	Wheel Ø 50 mm	106 mm	155 mm	-	-
	Wheel Ø 75 mm	137,8 mm	-	131 mm	198 mm

Items with this sign "-" are not available in our standard range. Please contact us.

Swivel bearings



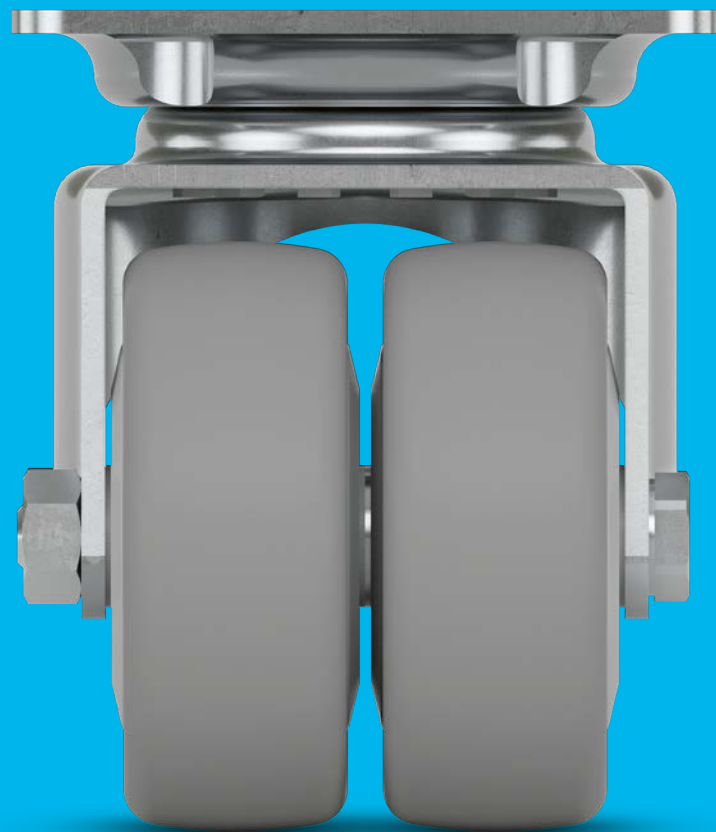
Two ball races for best manoeuvrability.

Washability



The Agila is also available as single wheel castor in pressed steel or washable stainless steel for permanent washability. Please contact us for more information.

WHEELS



FEATURES



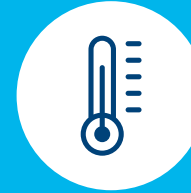
Low-vibration transport

Extra soft wheels with good shock-absorbing properties.



Sterile cleaning

Wheels for steam sterilisation in autoclaves used in sterile areas.



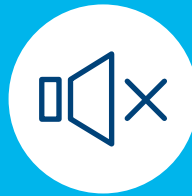
Constant heat resistance

Duratech wheels made of heat resistant material for use in extreme environments.



Protective seal

Wheels with sealed bearings to protect against water spray and dirt.



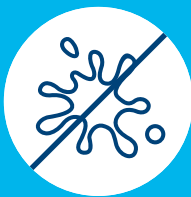
Quiet rolling

Soft wheel types for a quiet working environment.



Non-marking movement

Wheels with reduced abrasion and minimal cleaning effort.



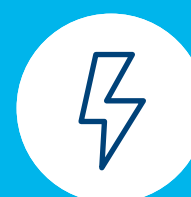
Non-staining operation

Non-staining on contact with floors when left standing for long periods.



Low-maintenance wheels

Thread guards for unobstructed operation and minimal cleaning effort.



Certified conductivity

Conductive version to protect users and electrical devices from electrostatic discharge.

WHEELS

The characteristics of our wheel families are as diverse as their uses. Precisely adapted to the required parameters, they provide optimal manoeuvrability with perfectly matched components, even under the most extreme conditions. You'll discover a wide range of wheels in our Agila product family. Here are the four wheel families.



• **Puretech**
Robust wheel with rubber tread for versatile use. Protection through low-vibration transport. An electric conductive version is also available.



• **Supratech**
All-around smooth-running wheel with thermoplastic rubber tread. Excellent performance in manoeuvrability and mobility due to the use of high-performance material. An electric conductive and washable version is also available.



• **Maxtech**

Perfect for a functional design, injection-moulded polyurethane. Optimal material properties for any purpose. Electric conductive and washable versions are also available.



• **Duratech**

Stable and indestructible, made of polyamide and thermosetting plastic with an abrasion-resistant tread.



Wide range

See the full range of the wheel families on the following pages.

Technical data and availability

ELECTRIC
CONDUCTIVE

	Puretech	Puretech precision	Puretech steel	Puretech conductive	Supratech	
Description	Product name	PIO	PIP	DIK	DYK	PJO
	Article description	PIO	PIP	DIK	DYK	PJO
	Tread material	Solid rubber, grey non-marking	Solid rubber, grey non-marking	Solid rubber, grey non-marking	Solid rubber, black non-staining	Thermoplastic rubber, grey non-marking
	Tread hardness	Shore A 80	Shore A 75	Shore A 80	Shore A 80	Shore A 87
	Wheel body material	Polypropylene	Polypropylene	Pressed steel	Pressed steel	Polypropylene
	Thread guard	-	● Polypropylene	● Pressed steel	● Pressed steel	-
	Temperature range	-20 °C / +60 °C	-20 °C / +60 °C	-20 °C / +85 °C	-20 °C / +85 °C	-20 °C / +60 °C
	Width of tread / wheel diameter in mm	25 mm / Ø 75	25 mm / Ø 75	19 mm / Ø 50	19 mm / Ø 50	19 mm / Ø 50 25 mm / Ø 75
	Electric conductive (10 ⁴ OHM)	-	-	-	●	-
Bearing type	Plain bearing	●	-	-	-	●
	Roller bearing	-	-	-	-	-
	Cone ball bearing	-	-	●	●	-
	Precision ball bearing	-	●	-	-	-
Load capacity	Wheel Ø 50 mm	-	-	60 kg	60 kg	70 kg
	Wheel Ø 75 mm	80 kg	80 kg	-	-	100 kg

Items with this sign "●" are available. Items with this sign "-" are not available in our standard range. Please contact us.

The mentioned load capacity is only valid for the Agila twin product family. The load capacity of a single wheel without housing could be different.

Bearing types



Plain bearing for short distances.



Cone ball bearing provides improving rolling properties.



Precision ball bearing for highest performance.

ELECTRIC
CONDUCTIVE

Supratech	Supratech precision	Supratech stainless	Supratech conductive	Maxtech	Maxtech stainless	Duratech
PJH	PJP	PJE	YGO	UAK	UAE	UOO
Thermoplastic rubber, grey non-marking	Thermoplastic rubber, grey non-marking	Thermoplastic rubber, grey non-marking	Thermoplastic rubber, grey non-marking	Polyurethane	Polyurethane	Polyamide
Shore A 85	Shore A 87	Shore A 87	Shore A 87	Shore D 40	Shore D 42	Shore D 75
Polypropylene	Polypropylene	Polypropylene	Polypropylene	Polyamide	Polyamide	Polyamide
● Pressed steel	● Polypropylene	● Polypropylene	-	● Pressed steel	● Polyamide	-
-20 °C / +60 °C	-20 °C / +60 °C	-20 °C / +60 °C	-20 °C / +60 °C	-40 °C / +80 °C	-20 °C / +60 °C	-40 °C / +80 °C
25 mm / Ø 75	25 mm / Ø 75	25 mm / Ø 75	19 mm / Ø 50 25 mm / Ø 75	20 mm / Ø 50	25 mm / Ø 75	20 mm / Ø 50
-	-	-	●	-	-	-
●	-	-	●	-	-	●
-	-	-	-	-	-	-
-	-	● Stainless	-	●	● Stainless	-
-	●	-	-	-	-	-
-	-	-	70 kg	50 kg	-	70 kg
100 kg	100 kg	100 kg	100 kg	-	100 kg	-

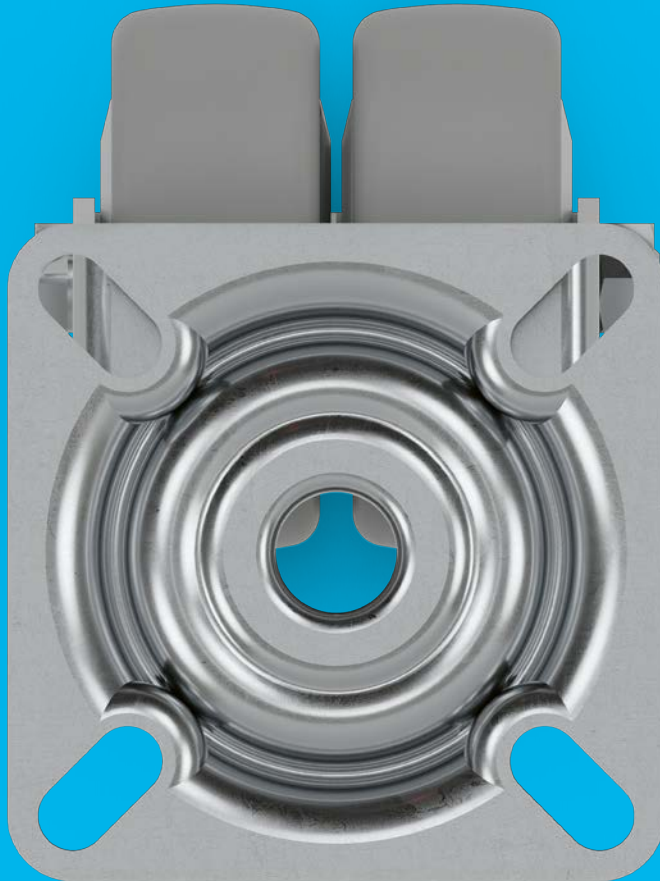


Load capacity

The load capacity depends on the housing and wheels. Each has been tested and fulfills the requirements according to EN 12528 and EN 12530 at a speed of 4 km/h. When using four castors, you can calculate the necessary load capacity as follows: The sum of the weight of your application plus the additional load divided by three castors.

$$\frac{\text{Weight of application} + \text{load}}{3} = \text{Load capacity of one castor}$$

FITTINGS



FEATURES



Variable fitting options

Different fitting dimensions for a large range of applications.

ADDITIONAL FEATURES



Practical system solution

Practical system solution with all the technical components for central locking available. Contact us.



Colour matching

Colours can be adapted to match the product design.



Non hazardous materials

Complies with the RoHS directive and REACH regulation of the European Union. Does not contain polycyclic aromatic hydrocarbons or chromium (VI).



Tested quality

Tested in our own laboratory for compliance with European standards.

PLATE FITTINGS

The fitting of a castor is dependent on the application it's being attached to. With plate fittings, the castors can be screwed under the device with four screws. This ensures a simple and robust connection.



Technical data and availability

CENTRAL LOCKING

Description	Fitting type	Swivel plate	Swivel plate	Central total locking plate
	Article description	P40	P50	P54*
	Size of plate	60 x 60 mm	77 x 67 mm	70 x 55 mm
	Plate hole centres in mm	48/38 x 48/38	61,5/56 x 51,5/46,5	57/51 x 41
	Plate hole \varnothing	6,3 mm	8,5 mm	5,5 mm
Overall height	Wheel \varnothing 50 mm	69 mm	-	-
	Wheel \varnothing 75 mm	-	102 mm	103 mm

Items with this sign "-" are not available in our standard range. Please contact us.

* Plate P54 can be combined just with the housing 2976 with central total lock.





BOLT HOLE FITTINGS

A bolt hole offers the option to fix the application to the castor with a standard screw M10 or M12. Screws of any length can be used.

Bolt hole 
For screws of any length.



Technical data and availability

			
Description 	Fitting type	Bolt hole	Bolt hole
	Article description	P30-10	P30-11
	Bolt hole \varnothing	10 mm	11 mm
Overall height 	Wheel \varnothing 50 mm	-	69 mm
	Wheel \varnothing 75 mm	99 mm	-

Items with this sign "-" are not available in our standard range. Please contact us.

EXPERTISE THAT INSPIRES

CONTACT US

We are a globally operating company supporting you on five continents. This means on-site support with service on a level playing field – along with in-depth knowledge. Additionally, our solution experts will advise you on the best mobility concept for your needs. Go here to find your nearest TENTE location: www.tente.com/locations

INCREASE YOUR EFFICIENCY

Our intelligent mobility solutions help you save time, effort, energy, and operating expenses. This allows you to improve your operating methods and working conditions, thereby optimising your processes and ensuring higher productivity, profitability and safety. Ask for our solutions catalogue or read about how our customers benefit from our tailor-made solutions on our website: www.tente.com/solutions

SAVE DEVELOPMENT TIME

On our website you will find technical drawings, product data sheets and 2D and 3D CAD files in various formats: www.tente.com/agila

GET MORE INFORMATION

In addition to our informative website, you can easily download various catalogues and brochures on mobility solutions, customer references, and much more: www.tente.com/download



ER LIFE.

ET



www.tente.com



PRODUCTIVITY



SAFETY



DESIGN



DURABILITY



ENVIRONMENT