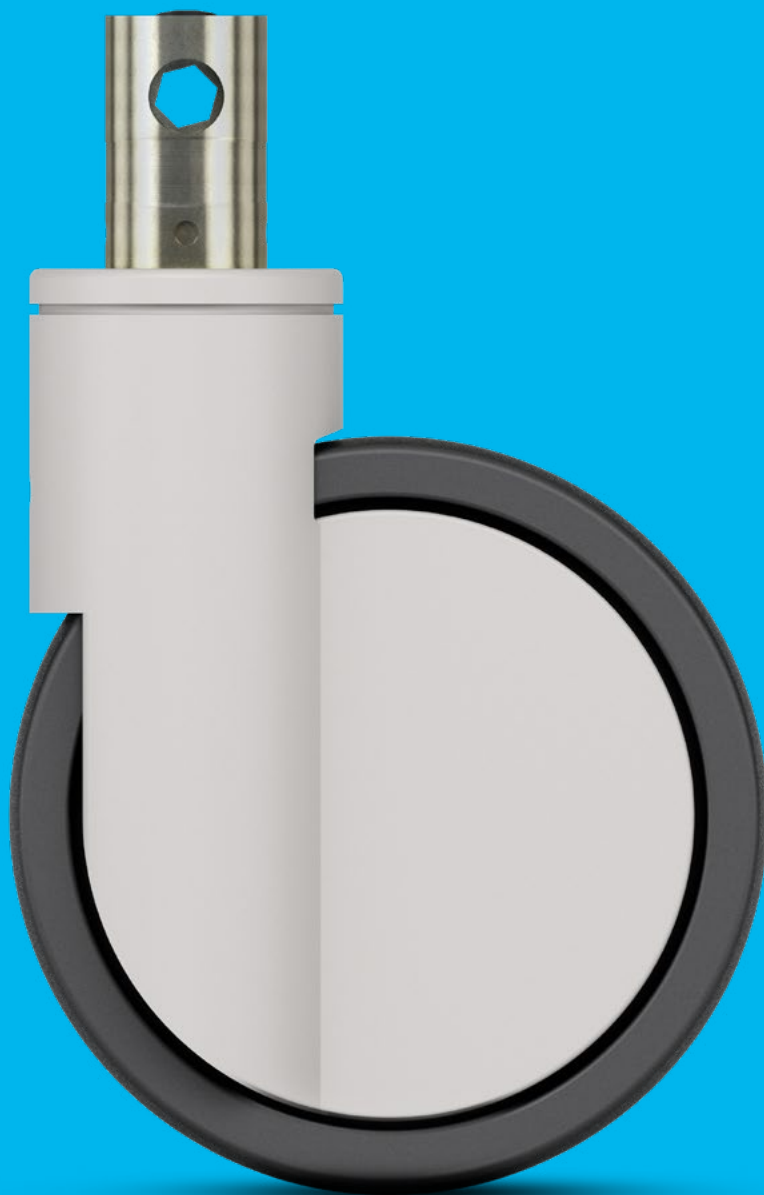


PRODUCT INFORMATION

INTEGRAL

 100 - 150 kg  130 - 229 mm  100 - 200 mm



TENTE

BETTER MOBILITY. BETTER LIFE.

INTEGRAL

Full choice of
customisable
product solutions.



6

Housings



12

Wheels



16

Fittings

INTEGRAL

Central locking variants for
improved and safe work processes.
Our all-rounder for the care sector.



4

INTEGRAL SMART

Flexible variant for care
with central and pleasantly
low-noise locking.



20

INTEGRAL ASSIST

Variant with intuitive drive
support to relieve the user.
For use on hospital beds.



26

MOBILITY FROM THE WORLD MARKET LEADER

TENTE believes in smart mobility solutions which noticeably improve people's lives and their working environment. As the world market leader in hospital bed castors, we have developed many customer-focussed solutions which increase productivity, ensure safety and open up new horizons in matters of design, durability as well as environmental friendliness. Leading manufacturers and companies of different industries rely on these competencies and our high production quality.

On the following pages you will find technical information about our Integral product family. We will also explain the added value this mobility solution offers to your organisation. Features include:

Quiet and smooth actuation

Very low actuation forces ensure smooth and quiet operation.

Highly customisable

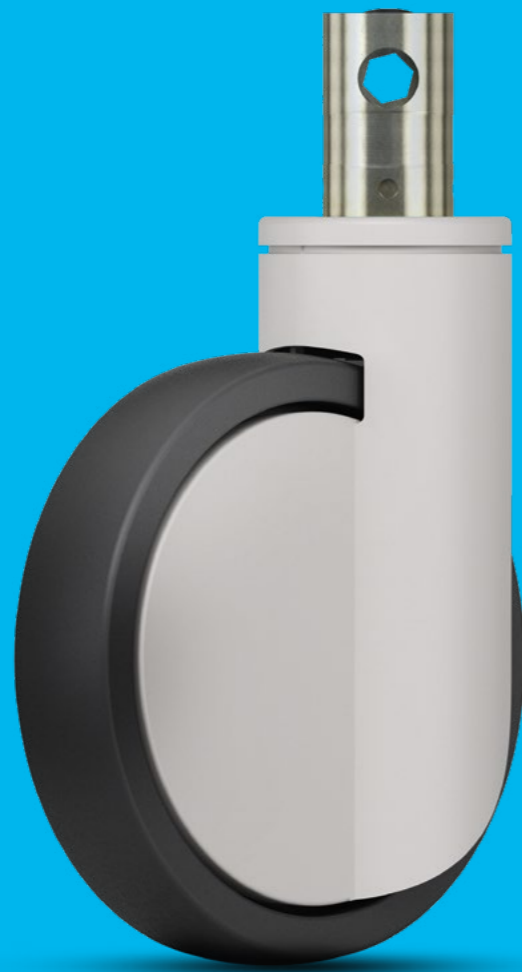
Adjust angles, brake and actuation forces to your needs.

Fast assembly

Our quick-fitting solution makes for fast assembly.



INTEGRAL



FEATURES



Reduced cleaning

The castors have smooth, easy-to-clean surfaces.



Award-winning design

Awarded with prestigious prizes by international juries.



Certified safety

TÜV Süd certified performance standard.



Permanent washability

All-metal options with components made of stainless steel.



Chemical-resistant components

Resistant to many cleaning agents and chemical substances.

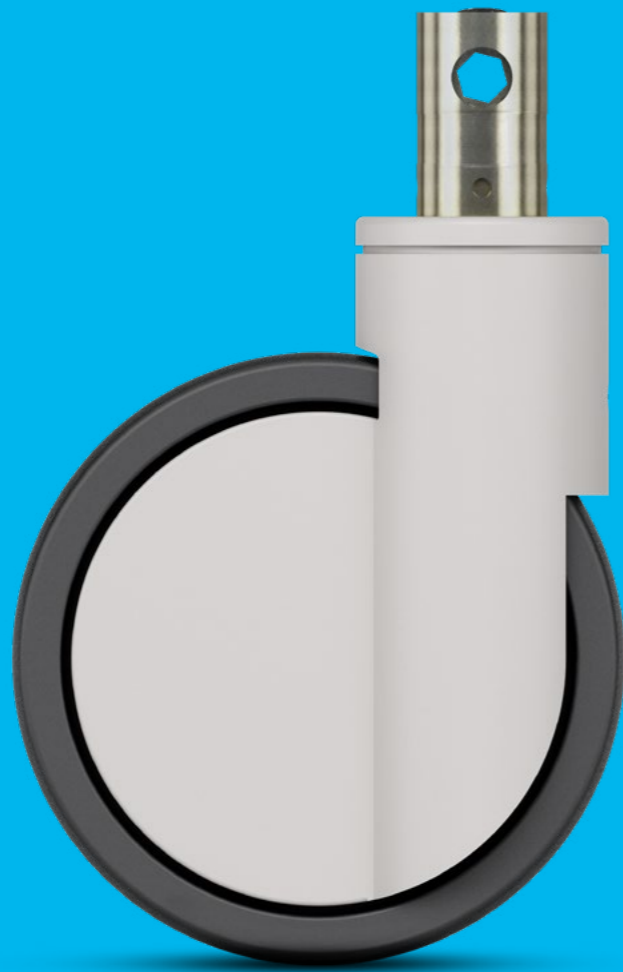


Colour matching

Colours can be adapted to match the product design. Standard colours:

-  RAL 9002
-  RAL 9006
-  RAL 9011

HOUSINGS



FEATURES



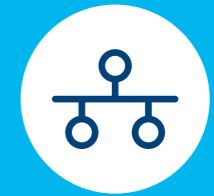
Optimised steering mechanism

Directional lock for improved steering around curves, as well as moving in a straight line over long distances.



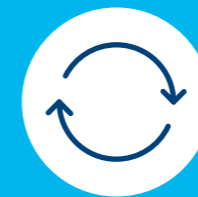
User-friendly central lock

Simultaneous locking of more than one castor using a central actuation lever.



Practical system solution

Practical system solution with all technical components for central locking.



Easy steering

Precision ball bearing in swivel head.



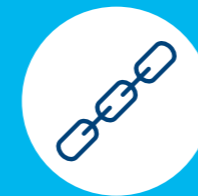
Multistage switching function

Up to three locking positions: directional lock, total lock or free mobility.



Secured stand

Total lock for simultaneously locking the wheel and swivel housing.



Extremely strong construction

Main load carried by an inner fork which is made of pressed stainless steel or pressed steel.

HOUSINGS

The frame is made of pressed steel or pressed stainless steel, with a precision ball bearing in the swivel head and wheel. The housing cover is made of synthetic materials and the stem has a cam hole for profile bars for central locking. The castors have smooth, easy-to-clean surfaces.

The materials are tested in our own laboratory for compliance with European standards. Non-hazardous materials are used in order to comply with the RoHS directive and REACH regulation of the European Union. These do not contain polycyclic aromatic hydrocarbons or chromium (VI). All components are resistant to many cleaning agents and chemical substances.

Swivel castor

Wheel and housing are free to move for easy manoeuvrability.



Central total and directional lock

User-friendly central lock for simultaneous locking of more than one castor. Combined directional lock for improved steering around curves, as well as movement in a straight line over long distances. Total lock for simultaneously locking the wheel and swivel bearing for a secure standing.



Central total lock

Simultaneous locking of the wheel and swivel bearing for secure standing with more than one castor.



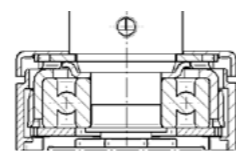
Standard castors



Description	Housing type	Swivel castor	Swivel castor with central total or directional lock	Swivel castor with central total lock
	Article description	2040	2044	2046
	Frame material	Pressed steel	Pressed steel	Pressed steel
	Housing cover material	Synthetic	Synthetic	Synthetic
	Swivel bearing	Precision ball bearing	Precision ball bearing	Precision ball bearing
	Washable	-	-	-
	Swivel interference			
Wheel Ø 100 mm	-	-	-	
Wheel Ø 125 mm	195 mm	195 mm	195 mm	
Wheel Ø 150 mm	230 mm	230 mm	230 mm	
Wheel Ø 200 mm	320 mm	320 mm	320 mm	

Items with this sign "-" are not available in our standard range. Please contact us.

Swivel bearing



Precision ball bearing for best manoeuvrability.

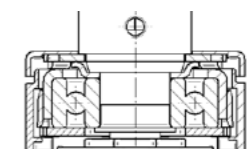
Washable castors



Description	Housing type	Swivel castor	Swivel castor with central total or directional lock	Swivel castor with central total lock
	Article description	7040	7044	7046
	Frame material	Pressed stainless steel	Pressed stainless steel	Pressed stainless steel
	Housing cover material	Synthetic	Synthetic	Synthetic
	Swivel bearing	Precision ball bearing	Precision ball bearing	Precision ball bearing
	Washable*	●	●	●
	Swivel interference			
Wheel Ø 100 mm	-	-	-	
Wheel Ø 125 mm	-	-	-	
Wheel Ø 150 mm	230 mm	230 mm	230 mm	
Wheel Ø 200 mm	-	-	-	

Items with this sign "●" are available. Items with this sign "-" are not available in our standard range. Please contact us.
 * Washable versions with metal components made of stainless steel. Washable castors must be sealed in the fitting area by the customer.

Swivel bearing

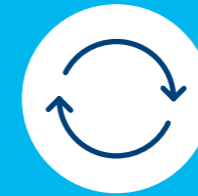


Precision ball bearing for best manoeuvrability.

WHEELS



FEATURES



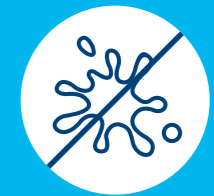
Comfortable manoeuvrability

Outstanding swivel and rolling properties due to optimised tread geometry and material selection.



Non-marking movement

Wheels with reduced abrasion and little cleaning requirement.



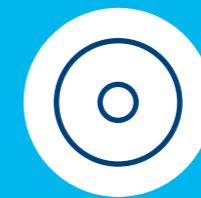
Non-staining operation

Non-staining on contact with floors during long standing periods.



Certified conductivity

Conductive versions to protect users and electrical devices from electrostatic discharge.



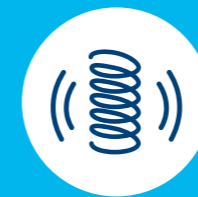
Protective seal

Optional wheels with sealed bearings to protect against spray water and dirt.



Quiet rolling

Soft wheel option for quieter mobility.



Low-vibration transport

Optional wheels with extra soft tread centre and good shock absorbing properties.

WHEELS

Precision ball bearings, polyurethane treads and wheels with excellent geometry ensure minimal pushing force and easy manoeuvrability of the wheels. Durability, stability and washability are basic requirements.



Maxtech
Extremely hard-wearing and hygienic. Perfect for functional design, injection-moulded polyurethane. Option: washable, with sealed precision ball bearing.



Maxtech soft
Extremely hard-wearing and hygienic. Perfect for functional design, injection-moulded polyurethane. With extra soft tread centre for good shock absorbing properties.



Maxtech conductive
Polyurethane with certified conductivity to protect users and electrical devices against electrostatic discharge. Conductive castors get a yellow cap as standard, making them easily identifiable.

Technical data and availability

		Maxtech	Maxtech	Maxtech conductive	Maxtech soft
Description	Product name	UAP	UAX	XSX	HAP
	Article description	Polyurethane	Polyurethane	Polyurethane	Polyurethane sandwich
	Tread material	Shore D 42	Shore D 42 or D 59***	Shore D 40	Shore D 42 and shore A 70
	Tread hardness	Polyamide	Polyamide	Polyamide	Polyamide
	Wheel body material	-30 °C / +80 °C	-30 °C / +80 °C	-30 °C / +80 °C	-30 °C / +80 °C
	Temperature range	32 mm	32 - 35 mm****	32 - 35 mm****	32 mm
	Width of tread	-	-	●	-
	Electric conductive (10 ⁴ OHM)	-	●	●	-
	Washable*	-	-	-	-
	Bearing type	Plain bearing	-	-	-
Roller bearing		-	-	-	-
Cone ball bearing		-	-	-	-
Precision ball bearing		●	● Sealed	● Sealed	●
Load capacity**	Wheel Ø 100 mm	-	-	-	-
	Wheel Ø 125 mm	150 kg	150 kg	150 kg	-
	Wheel Ø 150 mm	150 kg	150 kg	150 kg	150 kg
	Wheel Ø 200 mm	-	150 kg	150 kg	-

Items with this sign "●" are available. Items with this sign "-" are not available in our standard range. Please contact us.
 * Washable versions have a sealed wheel precision ball bearing. Washable castors must be sealed in the fitting area by the customer.
 ** Load capacity according to DIN 12531.
 *** Shore D 42 in diameter 100 - 150 mm and Shore D 59 in wheel diameter 200 mm.
 **** Width of tread of castors with wheel diameter 125 - 150 mm have 32 mm and castors with diameter 200 mm 35 mm width.

Swivel bearing



Precision ball bearing for highest performance.



Load capacity

The load capacity depends on the housing and wheel. It has been tested and fulfills the requirements according to EN 12531 at a speed of 4 km/h. When using four castors, calculate the necessary load capacity as follows: The weight of the application plus the additional load divided by three castors.

$$\frac{\text{Weight of application} + \text{load}}{3} = \text{Load capacity of one castor}$$

FITTINGS



FEATURES



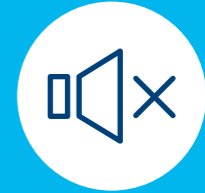
Fast assembly

Faster assembly thanks to an easy, quick-fitting solution.



Highly customisable

Adjust angles, brake and actuation forces to your needs.



Quiet and smooth actuation

Easy activation makes for smooth - and quiet - use.



Tested quality

Tested in our own laboratory in compliance with European standards.

FITTINGS

For an easy mounting into tubes, we offer different solid stem fittings. You can choose between different sizes and locking functions. The stems are highly customisable. Very low actuation forces ensure smooth and quiet operation. We also offer a special fitting type for fast assembly.

Stems with central locking function

Choose between central total lock or central total and directional lock. Very low actuation forces ensure smooth and quiet operation. The switching angles, brake and actuation forces are adaptable to your needs. Contact us.

Cam hole
To connect the castors by profile bars.

QUIET & SMOOTH



Quick fitting

Save assembly time and material costs with a stem with octagonal profile. Fitting screws are not necessary.

Thread
For safe fixation with screws.



Solid stem

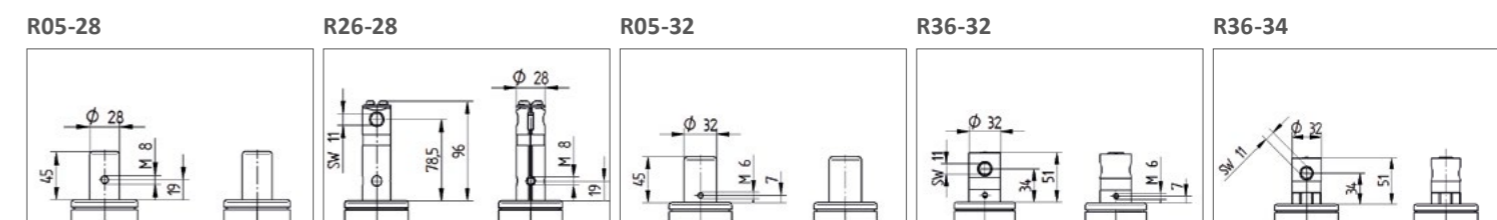
Easy mounting in tubes. For a long-lasting use, the stem is bright zinc plated and blue passivated.

Technical data and availability

Description	Fitting type	Solid stem	Stem with central total lock or central total and directional lock	Solid stem	Stem with central total lock or central total and directional lock	Stem with central total lock or central total and directional lock
	Article description	R05-28	R26-28	R05-32	R36-32	R36-34
	Shape	Round	Round	Round	Round	Round with octagonal profile
	Thread for fixation screw	M8	4 x M8	M6	4 x M6	-
	Thread position from bottom	19 mm	19 mm	7 mm	7 mm	-
	Solid stem \varnothing	28 mm	28 mm	32 mm	32 mm	32 mm
	Solid stem length	45 mm	96 mm	45 mm	50 mm	51 mm
	Shifting angles	-	30° or 45°	-	30° or 45°	30° or 45°
	Spring type for actuation torques	-	Soft, standard or hard	-	Soft, standard or hard	Soft, standard or hard
	Overall height	Wheel \varnothing 100 mm	-	-	-	-
Wheel \varnothing 125 mm		158 mm	158 mm	158 mm	158 mm	-
Wheel \varnothing 150 mm		183 mm	183 mm	183 mm	183 mm	-
Wheel \varnothing 200 mm		229 mm	229 mm	229 mm	229 mm	229 mm

Items with this sign "-" are not available in our standard range. Please contact us.

Technical drawings



INTEGRAL SMART



INTEGRAL SMART

For some standard versions the Integral is also available as a smart version in 100, 125 and 150 mm diameters with a reduced load capacity. An additional 100 mm diameter option offers an extremely low overall height of 130 mm.



Housing versions



Description	Housing type	Swivel castor	Swivel castor with central total or directional lock	Swivel castor with central total lock
	Article description	1040	1044	1046
	Frame material	Pressed steel	Pressed steel	Pressed steel
	Housing cover material	Synthetic	Synthetic	Synthetic
	Swivel bearing	Precision ball bearing	Precision ball bearing	Precision ball bearing
	Washable*	● **	● **	● **
Swivel interference	Wheel Ø 100 mm	180 mm	180 mm	180 mm
	Wheel Ø 125 mm	195 mm	195 mm	195 mm
	Wheel Ø 150 mm	230 mm	230 mm	230 mm
	Wheel Ø 200 mm	-	-	-



Items with this sign "●" are available. Items with this sign "-" are not available in our standard range. Please contact us.
 * Washable versions with sealed wheel precision ball bearing. Washable castors must be sealed in the fitting area by the customer.
 ** Just castors in diameter 100 mm are washable.

Wheel versions

		Maxtech	Maxtech	Maxtech conductive	Maxtech conductive
Description	Product name	Maxtech	Maxtech	Maxtech conductive	Maxtech conductive
	Article description	UAP	UAX	XSP	XSX
	Tread material	Polyurethane	Polyurethane	Polyurethane	Polyurethane
	Tread hardness	Shore D 42	Shore D 42	Shore D 40	Shore D 40
	Wheel body material	Polyamide	Polyamide	Polyamide	Polyamide
	Temperature range	-30 °C / +80 °C	-30 °C / +80 °C	-30 °C / +80 °C	-30 °C / +80 °C
	Width of tread	32 mm	32 mm	32 mm	32 mm
	Electric conductive (10 ⁴ OHM)	-	-	●	●
	Washable*	-	●	-	●
	Bearing type	Plain bearing	-	-	-
Roller bearing		-	-	-	-
Cone ball bearing		-	-	-	-
Precision ball bearing		●	● Sealed	●	● Sealed
Load capacity**	Wheel Ø 100 mm	100 kg	100 kg	100 kg	100 kg
	Wheel Ø 125 mm	135 kg	-	135 kg	-
	Wheel Ø 150 mm	135 kg	-	135 kg	-
	Wheel Ø 200 mm	-	-	-	-

Items with this sign "●" are available. Items with this sign "-" are not available in our standard range. Please contact us.

* Washable versions with sealed wheel precision ball bearing. Washable castors must be sealed in the fitting area by the customer.

** Load capacity according to DIN 12531.

Swivel bearings



Precision ball bearing for highest performance.



Load capacity

The load capacity depends on the housing and wheel. It has been tested and fulfills the requirements according to EN 12531 at a speed of 4 km/h. When using four castors, calculate the necessary load capacity as follows: The weight of the application plus the additional load divided by three castors.

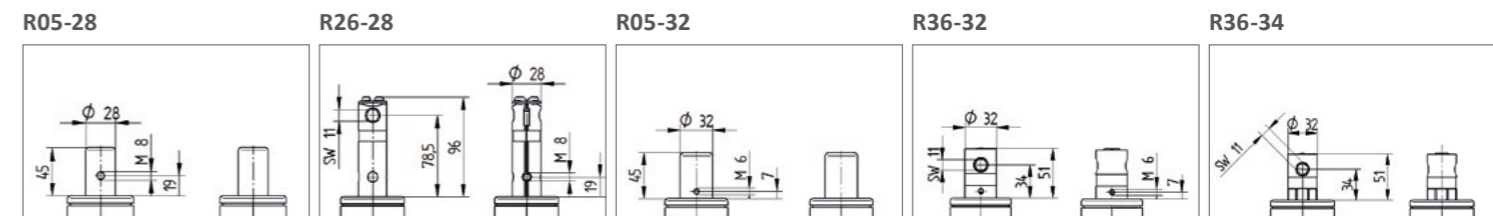
$$\frac{\text{Weight of application} + \text{load}}{3} = \text{Load capacity of one castor}$$

Fitting versions

		Solid stem	Solid stem with central total lock or central total and directional lock	Solid stem	Solid stem with central total lock or central total and directional lock	Solid stem with central total lock or central total and directional lock
Description	Fitting type	Solid stem	Solid stem with central total lock or central total and directional lock	Solid stem	Solid stem with central total lock or central total and directional lock	Solid stem with central total lock or central total and directional lock
	Article description	R05-28	R26-28	R05-32	R36-32	R36-34
	Shape	Round	Round	Round	Round	Round with octagonal profile
	Thread for fixation screw	M8	4 x M8	M6	4 x M6	-
	Thread position from bottom	19 mm	19 mm	7 mm	7 mm	-
	Solid stem Ø	28 mm	28 mm	32 mm	32 mm	32 mm
	Solid stem length	45 mm	96 mm	45 mm	50 mm	51 mm
	Shifting angles	-	30° or 45°	-	30° or 45°	30° or 45°
	Spring type for actuation torques	-	Soft, standard or hard	-	Soft, standard or hard	Soft, standard or hard
	Overall height	Wheel Ø 100 mm	130 mm 139 mm	130 mm 139 mm	130 mm 139 mm	130 mm 139 mm
Wheel Ø 125 mm		158 mm	158 mm	158 mm	158 mm	-
Wheel Ø 150 mm		183 mm	183 mm	183 mm	183 mm	-
Wheel Ø 200 mm		229 mm	229 mm	229 mm	229 mm	229 mm

Items with this sign "-" are not available in our standard range. Please contact us.

Technical drawings

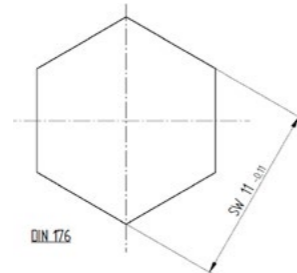


TECHNICAL DATA ACCESSORIES

Profile bar



i	Article description	Profile bar
	Wrench size	11
	Material	Zinc-plated steel
	Length	On request



TENTE levers



Description	Change lever type	Double lever	Lever	Lever
	Article description	Double lever	Lever	Lever 180
	Compatible with product	30° or 45°	30° or 45°	30° or 45°
	Material	Fibre-glass-reinforced polyamide	Fibre-glass-reinforced polyamide	Fibre-glass-reinforced polyamide
	Version	Left version Right version	Left version	Right version
	Width	41,5 mm	41,5 mm	41,5 mm
	Length	191,5 mm	95,75 mm	95,75 mm

Standard lever colours

More colours on request.

- RAL 7035
- Eloxal silver

Standard plug colours

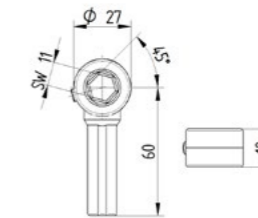
More colours on request.

- RAL 6016
- RAL 3016
- RAL 9011

Adaptor for customer levers



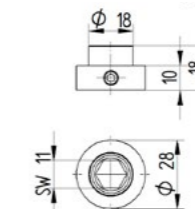
i	Article description	Adaptor
	Wrench size	11
	Material	Zinc die cast



Bearing guide



i	Article description	Bearing guide
	Wrench size	11
	Material	Zinc die cast

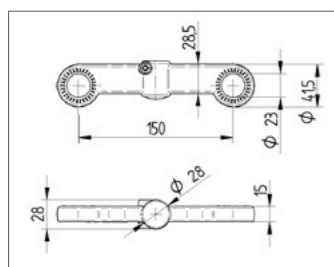


Change lever

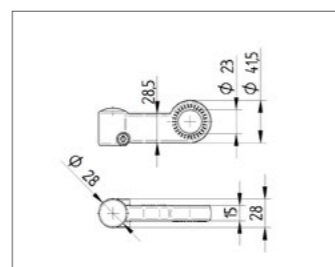


i	Article description	Change lever	Change lever	Change lever
	Wrench size	11	11	11
	Material	Zinc die cast	Zinc die cast	Zinc die cast
	Length	24 mm	28 mm	65 mm

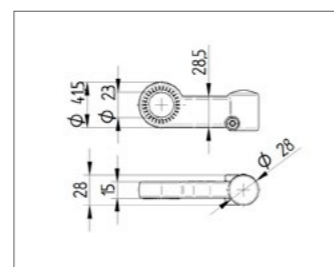
Double lever



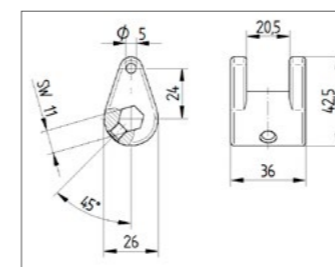
Lever



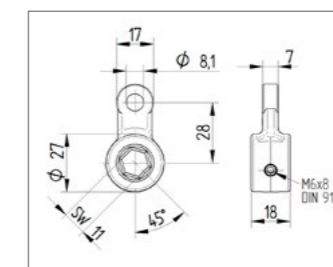
Lever 180



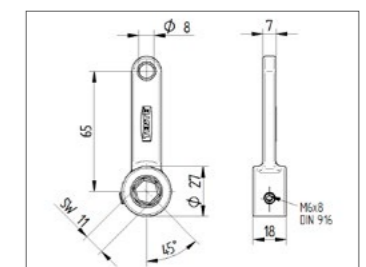
Change lever 24 mm length



Change lever 28 mm length



Change lever 65 mm length



INTEGRAL ASSIST



INTEGRAL ASSIST

Integral assist, in combination with the WeAssist™ system, provides additional intuitive drive support. This relieves the burden on the user, increases the quality of work and makes processes more efficient. It has a diameter of 150 mm and is equipped with a central total and directional lock.

Standard colours:
RAL 9002



Intuitive drive support

Once the directional lock is activated and the application is pushed, the support starts and the application can be easily pushed or stopped. This saves time and effort.

INTUITIVE DRIVE

The development of Integral Assist and the WeAssist system is not only a revolution – but above all a team of two companies: LINAK® and TENTE®. Both have joined forces to get WeAssist on the way – from the idea to implementation.

As part of the joint development, both companies use valuable synergies and combine their expertise: LINAK is one of the leading companies in the field of linear drive systems for medical applications. TENTE is the global market leader in the field of health and nursing bed castors. The combined know-how of both companies and their many years of experience in the healthcare sector are also seamlessly reflected in the innovative functions and features of the WeAssist system.

LINAK TENTE



Discover more details

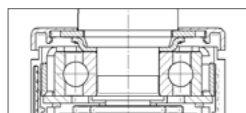
Scan the QR code now and find out more about the two partners.

Housing variants



Description	i Housing type	Steering castor with Central total or directional determination
	Item description	ED44
	Frame material	pressed steel
	Material housing cover	plastic
	swivel bearing	precision ball bearing
	offset	40 mm
	castor width	102 mm
	Permissible environmental conditions	Operating temperature 5°C to 40°C, Humidity 20% - 80%
	Permissible storage temperature	-10°C to 45°C
	Hardness of tread	85 Shore A
	Load capacity	150 kg
	Load capacity (static)	450 kg
	Drive motor	BLDC
	Driving directions	CW & CCW
	Nominal voltage	26VDC
	Nominal torque	6,5 Nm
	Nominal power	190 W
	Nominal RPM	200 rpm
	Max speed	7,6 km/h
	Washable*	●
Swivel interference	Ø 100 mm wheel	-
	Ø 125 mm wheel	-
	Ø 150 mm wheel	230 mm

swivel bearing



Precision precision ball bearing for best manoeuvrability.

Items with this character "●" are available. Items marked "-" are not available in our standard range. Please contact us. * washable castors as per AK-BWA.

Wheel variants



Description	i Product name	Novatech*
	Item description	ETW
	Running surface material	Polyurethane
	Material wheel centre	Steel
	wheel width	50 mm
	Electrically conductive (10 ⁴ OHM)	-
Storage type	plain bearing	-
	roller bearing	-
	cone ball bearing	-
	precision ball bearing	●
Load load capacity**	Ø 100 mm wheel	-
	Ø 125 mm wheel	-
	Ø 150 mm wheel	150 kg

Items with this character "●" are available. Items marked "-" are not available in our standard range. Please contact us.

* with drive assistance

** load capacity according to DIN 12531.



load capacity

The load capacity depends on the housing and wheel. It is tested and meets the requirements of EN 12531 at a speed of 4 km/h. When using four castors, the required load capacity is calculated as follows: The weight of the application plus the additional load divided by three castors.

$$\frac{\text{Weight of application} + \text{load}}{3} = \text{A castor load capacity}$$

Mounting variants

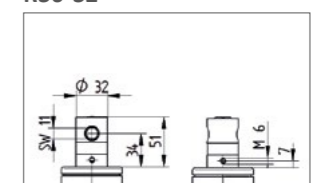


Description	i Mounting type	Pins with central total determination or central Total and directional fixed position	Pins with central total determination or central Total and directional fixed position
	Item description	R36-32	R36-34
	Form	Round	
	Thread for fastening screw	4 x M6	
	Thread position from below	7 mm	
	Dome diameter	110 mm	
	Pin Ø	32 mm	32mm
	bolt length	50 mm	51 mm
	switching angle	30° or 35°	30° or 35°
	Spring type for switching forces	Soft or standard	Soft or standard
Overall height	Ø 100 mm wheel	-	-
	Ø 125 mm wheel	-	-
	Ø 150 mm wheel	183 mm	175 mm

Items marked "-" are not available in our standard range. Please contact us.

Technical drawings

R36-32



THE WEASSIST-SYSTEM SIMPLY PUT, LESS COMPLEX



LINAK® battery
The LINAK Li-Ion battery has a built-in charger. The battery snaps on and off for easy installation and removal. And it is stackable for higher capacity.



LINAK® control unit
The LINAK control unit, featuring smart software, is available in various power levels, providing a wide range of features.



TENTE® Integral assist
One of the four castors is a TENTE® Integral assist with intuitive drive assistance. The diameter is 150 mm, and it features central total and directional lock.



TENTE® Integral
In addition to one TENTE Integral assist, the solution requires three TENTE Integral castors. These castors feature central locking and are recognised for their durability and TÜV Süd certification.

„For the operation of WeAssist no training is required to operate. You just get started.“

MANOEUVRING: SIMPLE

Pushing a bed with WeAssist is completely intuitive. No training. No instructions. No buttons. You simply stand by the head of the bed and push to start. You save not only time and effort, but also frustrations.

INTERACTION: PERFECT

The intuitive operation is made possible by the interaction between the LINAK control unit and the TENTE

Integral assist castor. The two key components of the system are perfectly coordinated and run silently in the background. Or rather, under the hospital bed. The WeAssist system does not stand out but blends in perfectly with the look of any bed.

HOW IT WORKS: CLEVER

The smart software in the LINAK control unit detects and interprets what you want to do and for-

wards the corresponding signals to the Integral assist castor.

SUPPORT: HAPPY!

Do you have any questions about the design or how the WeAssist system works? We would love to assist you. Simply contact us to get support from our experts: [WeAssist.com/en/contact](https://www.linak.com/en/contact).

EASILY PREVENT DOWNTIME

The OneConnect™ app for iOS and Android devices allows the service engineer to remotely examine WeAssist™ and help your team troubleshoot issues.

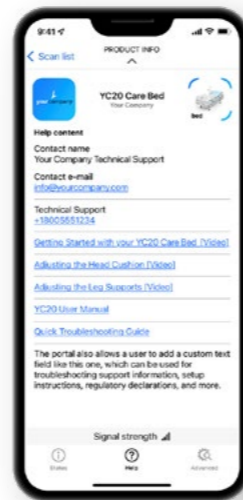
Of course, the hospital staff can also access the real-time data of WeAssist themselves via OneConnect™.

A short check-up tour through the hospital ward is enough – and all WeAssist systems that need to be charged, cleaned or maintained can be identified. Fast, efficient – and without connecting a single cable. This requires LINAK® control systems with Bluetooth® radio technology.

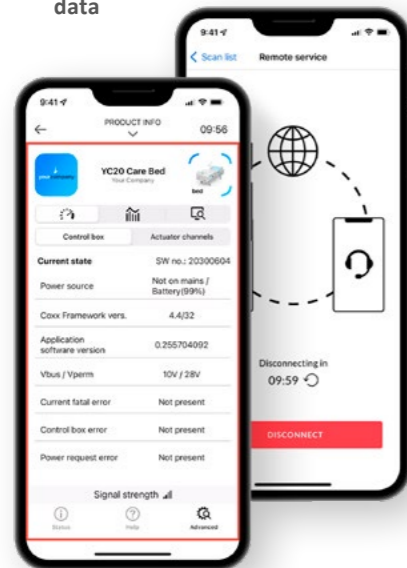
View System status in ongoing operation



Help Adapt content



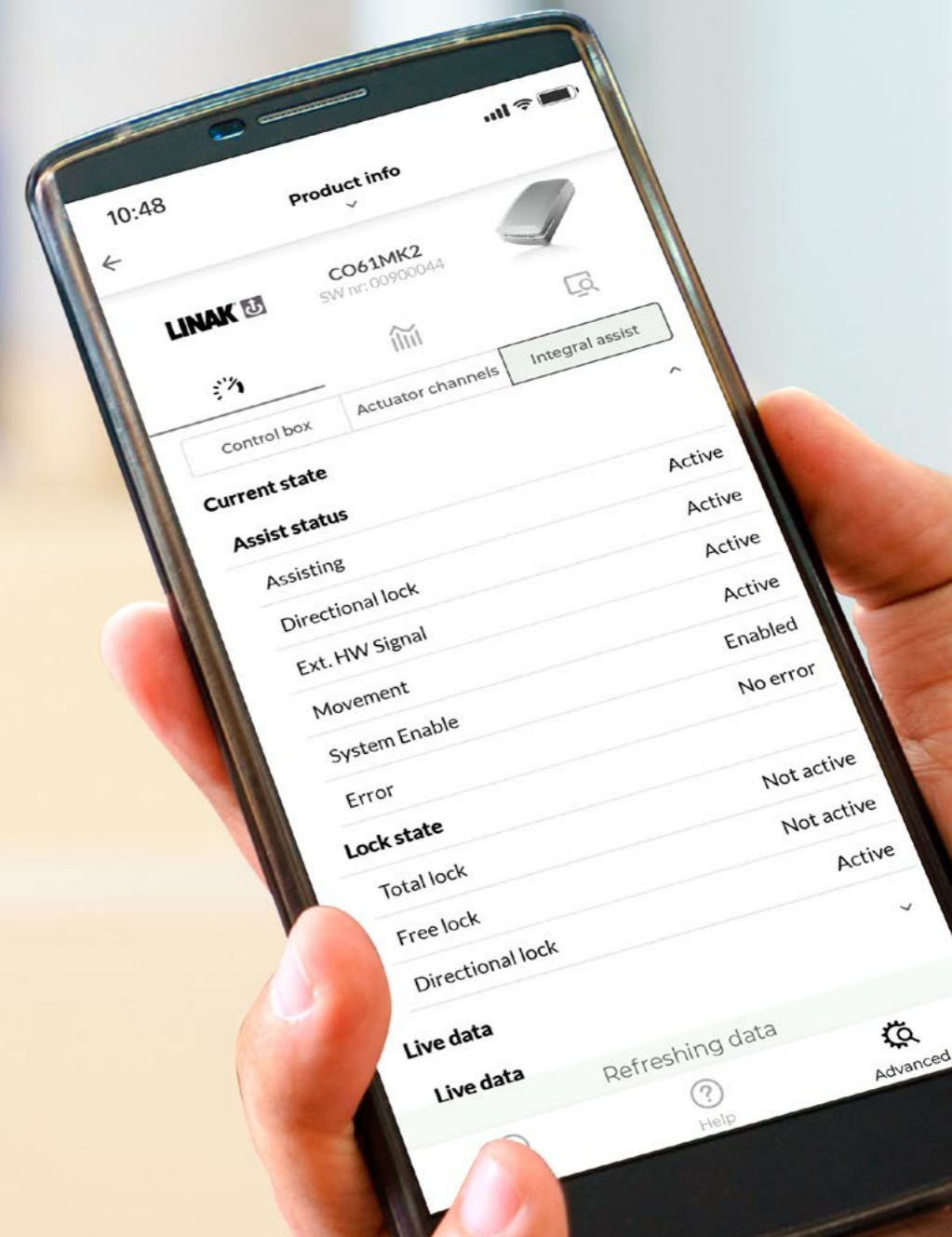
Remote access on system data



Bluetooth® Access to system data



The aesthetics of your business as a brand



The Bluetooth® wordmarks and logos are registered trademarks of Bluetooth® SIG, Inc. and any use of these trademarks by LINAK® A/S is under license. Other trademarks and trade names are the property of the respective owners. Android is a trademark of Google LLC.

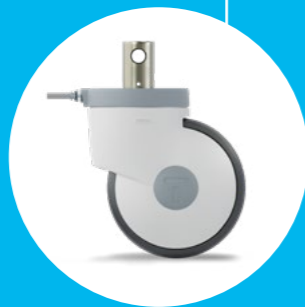
ACCESSORIES FOR CENTRAL LOCKING

Our central locking components offer a practical solution for your needs. Please contact us for further advice.



Change lever

To connect the transmission bar from the foot end to the head end. It is available in three different sizes.



Optional: Integral assist

As a fourth castor, the TENTE Integral assist with intuitive drive support can be used.

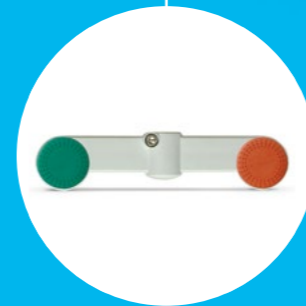


Bearing guide



Profile bar

Available in different lengths, on request.



TENTE lever

All change levers will be delivered with a stainless steel screw. They are available as a single or double lever for the right and left side. Plugs are available in different colours.



Optional: adaptor for customer levers

This round adaptor accepts customer made levers.

DIVERSITY WITH A SYSTEM OUR CASTORS

All of our products have their own specific qualities and strengths. Whether it's high design standards, specialist applications or exceptional load capacities – our range can meet your needs and can be adapted to fit different models.

From the correct dimensions and technical specifications to the required configuration, our product families are able to offer the ideal solution – whatever you need.

Contact us for more information or visit our website:
www.tente.com

E-Drive ultimate



⌀ 125 mm

E-Drive optima



⌀ 125 mm

Alpha



⊃ 70 - 500 kg
⌀ 80 - 200 mm

Delta



⊃ 300 - 600 kg
⌀ 125 - 200 mm

Delta twin



⊃ 600 - 750 kg
⌀ 125 - 200 mm

Zeta



⊃ 300 - 800 kg
⌀ 125 - 250 mm

Kappa



⊃ 300 - 3.000 kg
⌀ 80 - 300 mm

Kappa flex



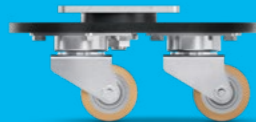
⊃ 360 - 750 kg
⌀ 160 - 200 mm

Omikron



⊃ 900 - 22.500 kg
⌀ 100 - 600 mm

Radiata



⊃ 1.200 - 1.500 kg
⌀ 80 mm

Scout



⊃ 150 - 350 kg
⌀ 160 - 200 mm

Linea industrial



⊃ 60 - 150 kg
⌀ 75 - 150 mm

Integral assist



⊃ 100 - 150 kg
⌀ 150 mm

Integral



⊃ 100 - 150 kg
⌀ 100 - 200 mm

Integral twin



⊃ 125 - 250 kg
⌀ 100 - 150 mm

Linea clinic



⊃ 150 - 200 kg
⌀ 125 - 150 mm

Forma



⊃ 125 - 150 kg
⌀ 125 - 150 mm

Aviana care



⊃ 100 kg
⌀ 75 mm

Aviana



⊃ 100 kg
⌀ 75 mm

Agila



⊃ 40 - 100 kg
⌀ 50 - 150 mm

Agila twin



⊃ 50 - 100 kg
⌀ 50 - 75 mm

Stora



⊃ 60 - 160 kg
⌀ 75 - 160 mm

Mono



⊃ 30 - 70 kg
⌀ 50 - 100 mm

Galea



⊃ 60 - 100 kg
⌀ 100 - 125 mm

Levina



⊃ 60 - 100 kg
⌀ 75 - 150 mm

Levina care



⊃ 100 kg
⌀ 100 - 125 mm

Linea



⊃ 40 - 150 kg
⌀ 50 - 150 mm

Anika



⊃ 40 - 50 kg
⌀ 55 - 75 mm

Lumina



⊃ 10 - 100 kg
⌀ 35 - 75 mm

Stylea



⊃ 40 - 100 kg
⌀ 35 - 100 mm

Smiles



⊃ 40 kg
⌀ 50 mm

Compacta



⊃ 10 - 55 kg
⌀ 14 - 50 mm

EXPERTISE THAT INSPIRES

CONTACT US

We are a globally operating company supporting you on five continents. This means on-site support with service on a level playing field – along with in-depth knowledge. Additionally, our solution experts will advise you on the best mobility concept for your needs. Follow this link to find your nearest TENTE location: www.tente.com/locations/

INCREASE YOUR EFFICIENCY

Our intelligent mobility solutions help you save time, effort, energy, and operating expenses. This allows you to improve your operating methods and working conditions, thereby optimising your processes and ensuring higher productivity and profitability, and improved safety. Ask for our solutions catalogue or read about how our customers benefit from our tailor-made solutions on our website: www.tente.com/mobility-solutions/

SAVE DEVELOPMENT TIME

On our website you will find technical drawings, product data sheets and 2D and 3D CAD files in various formats: www.tente.com/products/

GET MORE INFORMATION

In addition to our informative website, you can easily download various catalogues and brochures on mobility solutions, customer references, and much more: www.tente.com/downloads/





www.tente.com



PRODUCTIVITY



SAFETY



DESIGN



DURABILITY



ENVIRONMENT